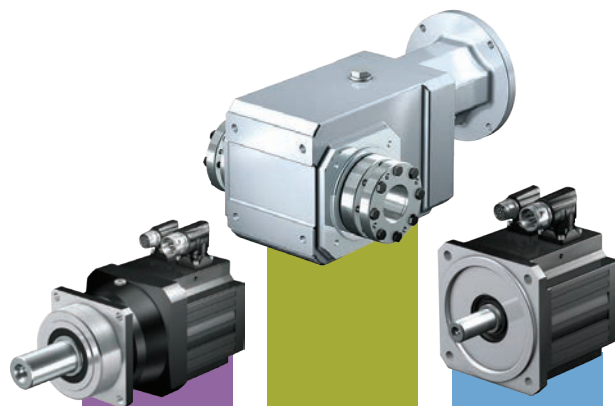




STÖBER

BREADTH OF **PRODUCT.**
BREADTH OF **KNOWLEDGE.**



WE ARE STOBER



*Third generation family owned business. Established Maysville, Kentucky location in 1991.
We focus on your needs, not shareholder objectives.*

What We Stand For:

OUR THREE PILLARS

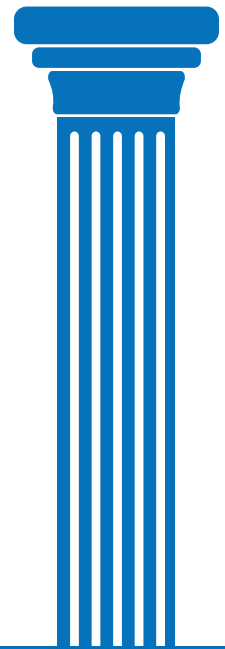
QUALITY



DELIVERY



SERVICE



QUALITY IS IN OUR DNA.

Superior Components

- SKF bearings to eliminate premature failure
- Freudenberg seals to withstand harsh environments
- Exxon Mobil lubricants to prevent seal blow-out
- Precision gearing for longer life

American Manufacturing and Production

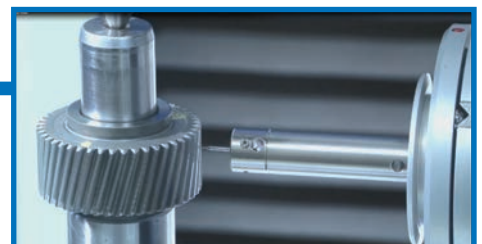
- Running 3 shifts, 24 hours a day, 5 days a week
- Ability for quick turnarounds on specials and emergency orders

Optimized Design

- Error free motor mounting
- Quality tolerances within microns - tightest tolerances on the market
- No fretting between motor and gearbox

Inspection and Testing

- Two state-of-the-art inspectors
- Less than .25% of units returned
- Every part is tested



DELIVERY AND SERVICE

24/7, 365 SERVICE AND SUPPORT
EVERY CUSTOMER GETS A DEDICATED TEAM!



APPLICATIONS SUPPORT

Design evaluation and sizing support



ORDERING SUPPORT

Live person answering every call



AFTERMARKET SERVICE

5 day turnaround



EMERGENCY SUPPORT

No expediting fee

GEARBOXES BUILT AND SHIPPED IN 1 DAY

from Maysville, Kentucky. Geared motors built and shipped in less than 1 week.



FORGET ABOUT LEAD TIMES

With over \$8 million in inventory, we have the parts on the shelf to build exactly what you need.

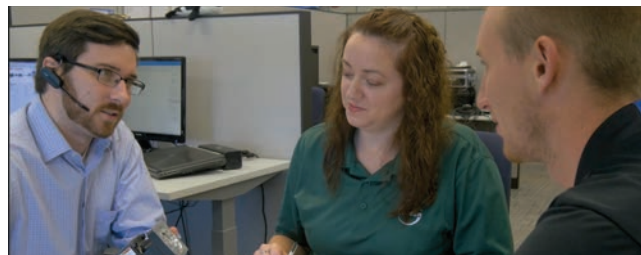
“

*We talked to every gearbox manufacturer in the states and overseas. And, every one of them would come in with price, price, price, that's the most important thing. **STOBER** comes in and says, 'Let's understand exactly what you're doing.'*

”

*-Carey Smith,
Big Ass Fans (Former Owner)*

BREADTH OF KNOWLEDGE



OVER 10,000 APPLICATIONS SIZED AND OPTIMIZED



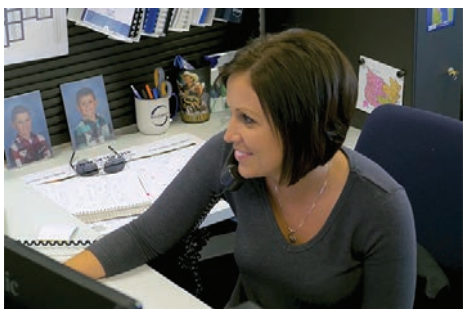
CUSTOMER CHALLENGE: A midwest meat processor had shock load failures on their loin kicker. Amp draw on the motor caused numerous gearboxes to fail.

THE STOBER SOLUTION: STOBER engineers visited the plant and evaluated the application. We configured the gearbox to have a higher service factor and peak torque booster, which eliminated premature failure.



CUSTOMER CHALLENGE: An OEM creating packaging equipment for food companies was struggling to find a compact solution, eliminate wear components, and withstand harsh environments.

THE STOBER SOLUTION: STOBER provided right angle, hollow bore washdown gear reducers. We eliminated belts, increased the machine's life in harsh environments, and improved the customer's machine performance. This saved them money on maintenance and design costs.



CUSTOMER CHALLENGE: A brewery had thousands of SKUs in their storeroom, consuming space and capital budget.

THE STOBER SOLUTION: STOBER optimized their SKUs to 32 part numbers, allowing them to use the same gearbox in multiple locations, saving millions of dollars annually.

WE HAVE BEEN AROUND SINCE 1934- ***WE'VE SEEN IT ALL!***

INDUSTRIES



AEROSPACE



AUTOMATION



AUTOMOTIVE
MFG.



BEVERAGE



CONVERTING/
PRINTING



ENTERTAINMENT



FOOD



MACHINE TOOL



MATERIAL
HANDLING



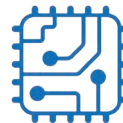
ENERGY



PACKAGING



ROBOTICS



SEMICONDUCTOR

***WE HAVE THE PRODUCT AND EXPERTISE TO
SOLVE ALL OF YOUR APPLICATIONS!***

INDUSTRY CHALLENGES

BEVERAGE

- Continuous operation
- Expensive downtime
- Energy consumption
- Large amounts of inventory
- Limited preventative maintenance capacity
- Water ingress

ENTERTAINMENT

- Finding compact components for stage automation
- Redundant braking
- Climate
- Delivery

FOOD

- Continuous operation
- Expensive downtime
- Energy consumption
- Large amounts of inventory
- Limited preventative maintenance capacity
- Water ingress
- Premature failure from rigid mounting
- Leaking gearboxes
- Food safety

MACHINE TOOL

- Designing high performance machines while competing with low cost alternatives
- Engineering resources spread thin, extending design cycles
- Minimizing machine envelope while maintaining performance
- Poor finish quality due to lack of stiffness
- Total lost motion compromised final goods

PACKAGING

- Additional maintenance from wear components
- Machine reliability and repeatability
- Improving machine performance impacted by inertia and space constraints
- Tight velocity control for high speed applications
- Minimize machine footprint

SEMICONDUCTOR

- Minimize machine footprint
- Increase throughput
- Reduce cost
- Improve reliability
- Part/chip size shrinking
- Torque or speed ripples can limit yield

THE STOBER ADVANTAGE

- Superior Quality
- Fastest Delivery
- Breadth of Knowledge
- Breadth of Product

Contact our experienced engineering team today!

BREADTH OF PRODUCT.

"We always try to understand what our customers need, and then make the choice for the very best unit." - Bernd Stober

We can handle every application you have, from machines doing intake to machines pushing the product out the door, and everything in between.

POWER TRANSMISSION GEAR UNITS



KSS



C



K



F

OUTPUT TORQUE:

Up to 106,296 in. lbs.

*RATIOS:

2:1 -552:1

**Higher ratios possible*

BENEFITS



- No oil leaks
- No Maintenance
- KSS and MR Renewal programs
- Average mean time to failure in a harsh 24/7 washdown environment is 9.1 years



The **LEAST EXPENSIVE** Gearbox You'll Ever Own

- 97% Energy Efficiency: For every \$1 of energy you put into the reducer, you get \$0.97 of energy out of it.

SUPERIOR COMPONENTS



THE WORLD'S TOUGHEST GEARBOX

DESIGNED WITH YOU IN MIND

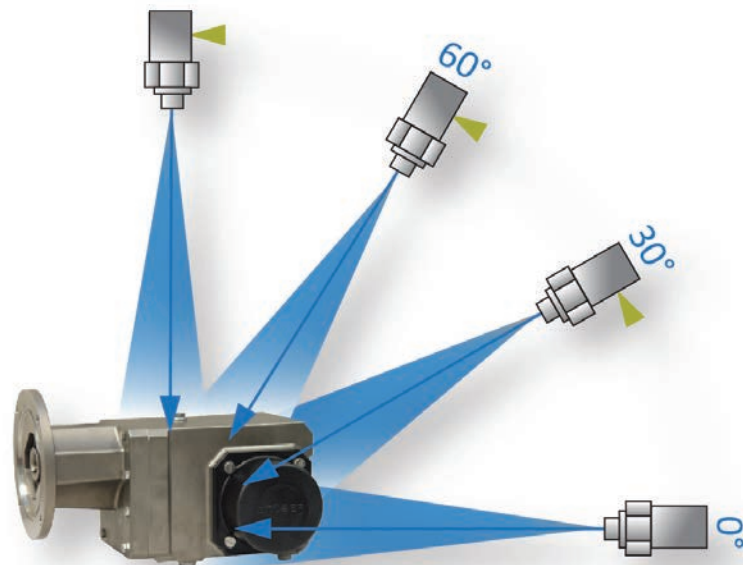
IP69K CERTIFIED TO PREVENT WATER AND DUST INGRESS

THE TEST INCLUDES SPRAYING UNITS WITH:

- 176° F water
- 1,450 PSI
- 10-15 cm from the reducer
- Rotated once every 12 seconds

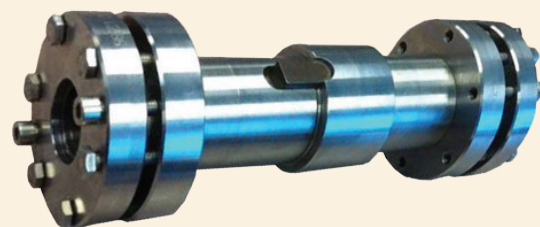
THE RESULTS:

- No paint flaked off and there was NO water ingress to the reducer
- The unit continued to run during and after the test



WOBBLE FREE BUSHING DESIGN ADVANTAGES

- Easy installation and removal
- Accommodate multiple shaft sizes to help with storeroom optimization
- Remove harborage points
- No need for precision ground shafts



REDUCE INVENTORY AND OPTIMIZE YOUR STOREROOM

- Any horizontal mounting - allows one gearbox to be mounted in multiple positions. Reduce inventory requirements and possibility for installation error
- Prime lists - our application support team can determine the right mix of reducers for your plant, optimizing your storeroom



EASY TO INSTALL AND REMOVE!
NO HAMMERS, TORCHES, OR CROWBARS NEEDED

SERVO GEAR UNITS



P



PH/PHQ



PE



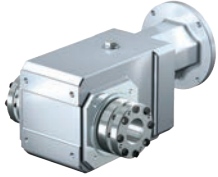
C



F



K/KL



KSS



PK



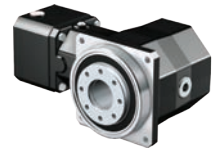
PKX



PHKX



PHK/
PHQK



KS

ACCELERATION TORQUE

Up to 43,000 NM

BACKLASH

≤1-25

BENEFITS



- Options for every application
- Mounting flexibility, more ratio options to choose from, shorter lengths, and quieter operations
- Highest stiffness and most precise
- Able to mount with any servo motor
- Compact design to fit in tight envelopes
- Bearing options for shaft loads
- High performance and high torque
- Ratios 3:1 - 2,242:1
- Coolest running
- Option for stainless steel - perfect for hygienic design - cleanest gearbox on the market

C - INLINE



K - RIGHT ANGLE



F - OFFSET



SERVO DOESN'T HAVE TO MEAN PLANETARY

SERVO GEARED MOTORS



P_EZ

PH_EZ
PHQ_EZ

PE_EZ



C_EZ



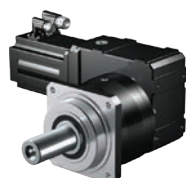
F_EZ



K_EZ



KL_EZ



PK_EZ



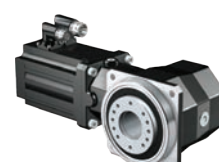
PKX_EZ



PHKX_EZ



PHK_EZ



KS_EZ

ACCELERATION TORQUE

Up to 43,000 Nm

BACKLASH

 $\leq 1-25$

BENEFITS

2 YEAR
WARRANTY
**MORE COMPACT**

- Save up to 45% on length with a STOBER geared motor!
- Eliminate extra components for an even smaller envelope

**ADAPTABILITY – OPTIONS FOR EVERY APPLICATION**

- Planetary, helical, inline, and right angle
- Mounting flexibility with various output options and housing styles
- More ratios
- Higher speeds
- Variety of encoder options
- Multiple brake options

**PACKAGED UNIT**

- Eliminate extra components
- No premature failure due to installation errors
- Aftermarket repair and sizing support readily available
- Order with one part number

**MORE DYNAMIC**

- Higher torque density
- 160% reduction in required torque for acceleration/ deceleration
- Less inertia and heat due to fewer wear components

**RUNS COOLER**

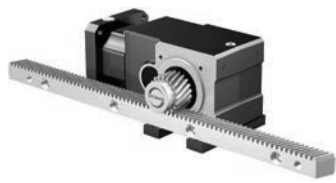
- Up to 14° F cooler than competitors
- Save on energy and machine components

**OUR MOTORS ARE
UL RECOGNIZED!**

**PLUG 'N PLAY
CONNECTIVITY**

STOBER geared motors work with B&R, Beckhoff, Bosch, Kollmorgen, Rockwell, and Siemens drives.

RACK AND PINION DRIVES



ZV



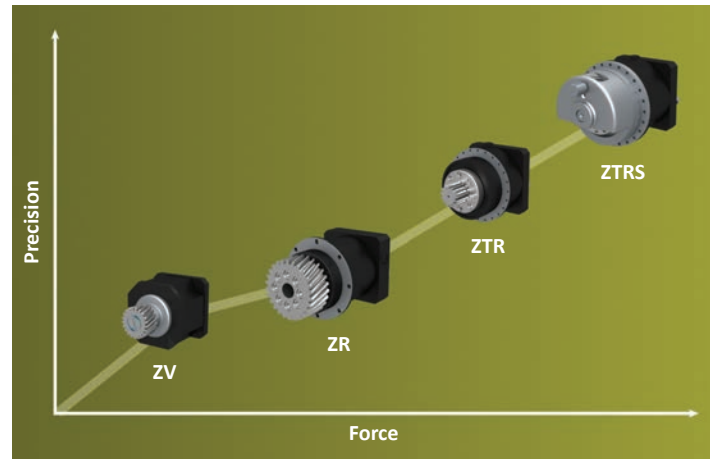
ZR



ZTR



ZTRS



MAX. FEED VELOCITY

6.7 meters/second

ACCELERATION FEED FORCE

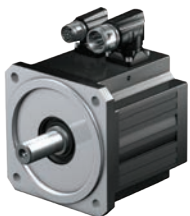
Up to 126 kN

BENEFITS

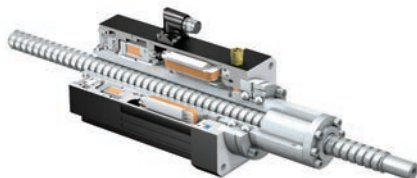
- Products for high speeds or high force
- STOBBER will optimize inertia mismatch through gear and pinion maximization or pinion tooth count
- Mod. 2-10 available
- High stiffness
- Reduce linear backlash



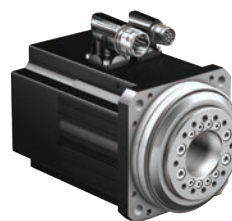
SERVO MOTORS



EZ



EZM



EZHD

OUR MOTORS ARE
UL RECOGNIZED!



PEAK TORQUE

205 Nm

MAX SPEED

8,000 RPM

BENEFITS



- Higher stiffness
- More compact
- High torque density



PLUG 'N PLAY CONNECTIVITY

STOBBER geared motors work with B&R, Beckhoff, Bosch, Kollmorgen, Rockwell, and Siemens drives.



OPTIONS TO MEET YOUR NEEDS

PACKAGES FOR DIFFERENT ENVIRONMENTS



- **Not Suitable** for washdown applications
- Non-plated hardware
- Standard epoxy paint
- Exxon Mobil 600XP220 Mineral Oil



- Suitable for **Moderate** washdown applications
- Stainless Steel Hardware – Plastic Covers
- **Multilayered 316 Stainless Steel Epoxy Coating**
- Exxon Mobil 600XP220 Mineral Oil or Exxon Mobil SHC 630



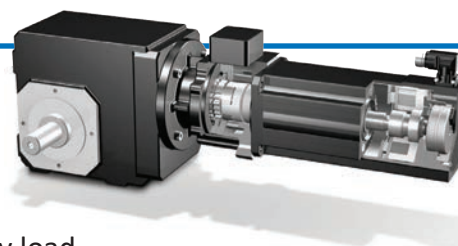
- Suitable for **Severe** washdown applications
- Stainless Steel Hardware – Plastic Covers
- **Multilayered 316 Stainless Steel Epoxy Coating**
- **Antimicrobial clear top coat**
- Exxon Mobil SHC CIBUS 220 Food Grade Oil



- The ultimate hygienic solution
- **Harshest** washdown applications
- All stainless steel hardware
- Stainless steel housing
- Exxon Mobil SHC CIBUS 220 Food Grade Oil

INTEGRATED SAFETY BRAKE - SERVOSTOP™

- Provides dynamic braking during power failures or emergency stops in hazardous situations
- Meets EN ISO 13849 safety standard
- Prevents accidental sliding or falling of vertical axis with gravity load
- Fits all standard servo motors
- Allows dismantling of servo motor even with brake engaged
- Electrical or manual wear control monitor
- Manual hand release available

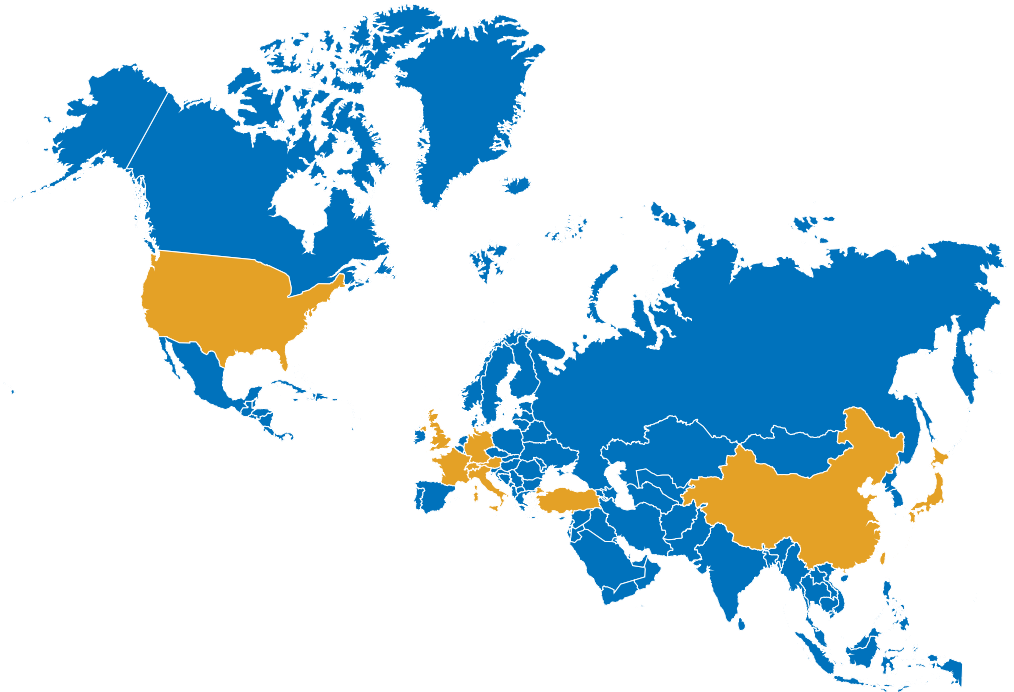


EXPLOSION PROOF - ATEX

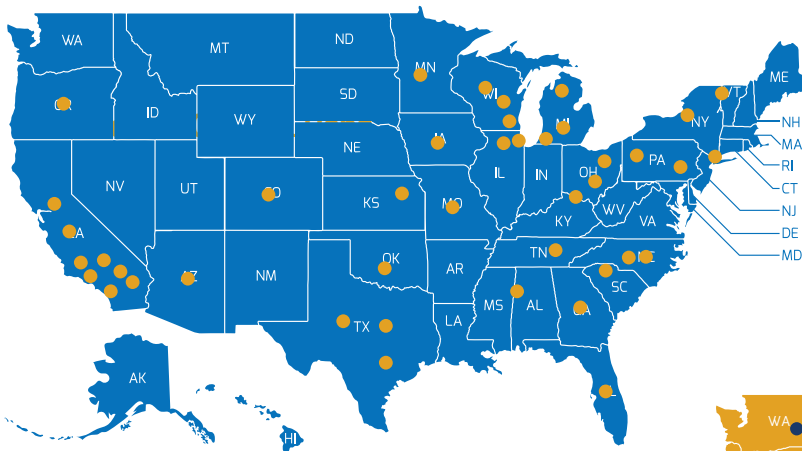
- Protects against ignition hazards such as sparks or hot surfaces
- Equipment category 2 and 3 for gas, vapor, mist, and dust
- Temperature class T3 and T4 (275-392 F)
- Zone 1-2 (gas) and 21-22 (dust)

GLOBAL PRESENCE

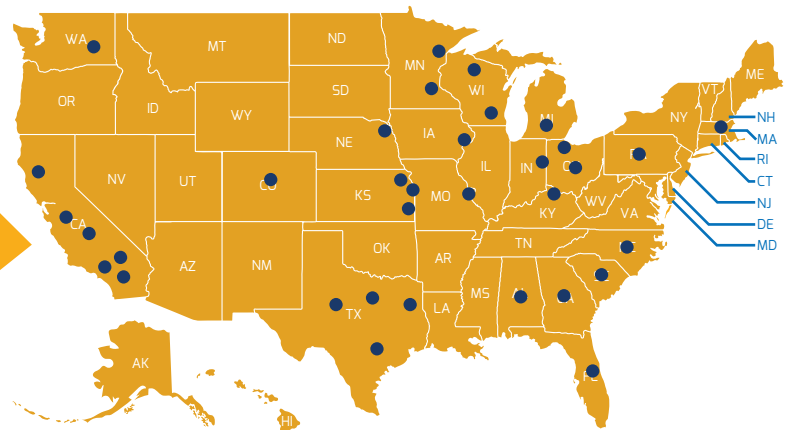
USA
CHINA
JAPAN
TAIWAN
FRANCE
ITALY
AUSTRIA
SWITZERLAND
GERMANY
ENGLAND
TURKEY



OVER 80+ FIELD REPS ARE JUST ONE CALL AWAY!



Motion Control Reps



Power Transmission Reps

THE TOOLS TO HELP YOU



STÖBER 
PRODUCT ID

Access all your product information (lubrication quantity, installation instructions, and more) through the serial number or QR code.



STÖBER 
CONFIGURATOR

Download drawings, dimensional sheets, tech specifications, or request a quote!



STÖBER 
DOCUMENTED COST SAVINGS

Proven savings in critical areas: reliability, inventory, lubrication, and plant efficiencies.

TALK WITH US



LIVE CHAT
WWW.STOBER.COM

**AVAILABLE
24/7/365**



PHONE
1.800.711.3588



EMAIL
SALES@STOBER.COM



STÖBER

1781 Downing Drive
Maysville, Kentucky

www.stober.com

1.800.711.3588

Form No. 442935
Copyright Version 29