



STÖBER BEVERAGE INDUSTRY

Insight

“The annual downtime for food and beverage production is over 10 weeks a year.” - Harting

How much is downtime costing you? Find ways to eliminate downtime, optimize your storeroom, and stop premature failure.

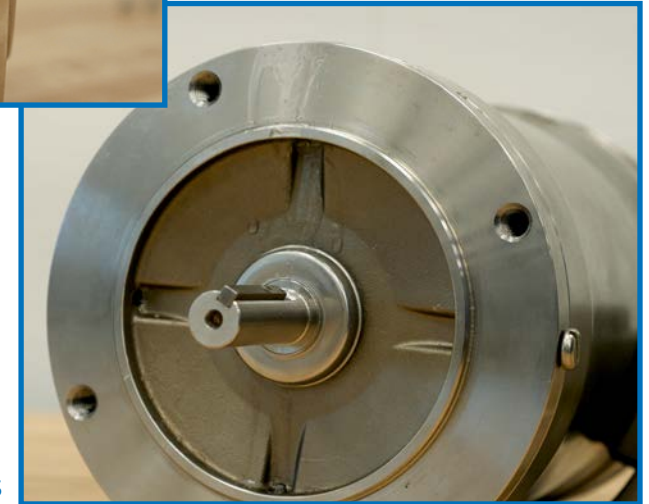


COMMON CHALLENGES AND PROBLEMS

- 1 Continuous operation
- 2 Expensive downtime
- 3 Energy consumption
- 4 Large amounts of inventory
- 5 Limited preventative maintenance capacity
- 6 Water ingress

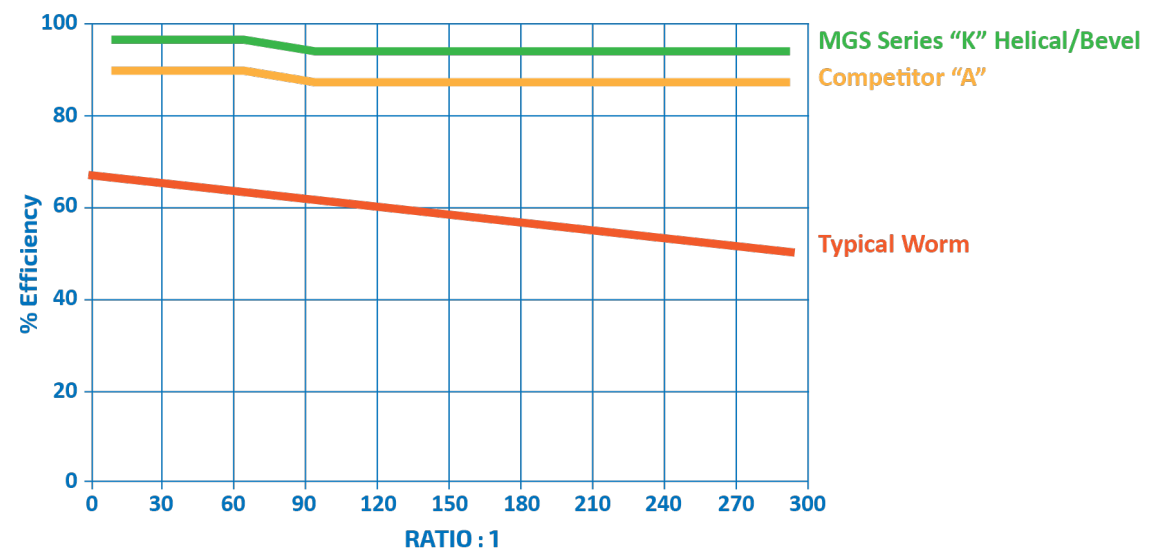


Motor weep holes can cause water ingress, our team can help!



Face
Drains

Efficiency Comparison



APPLICATIONS

Depalletizer

Cleaner

Filler

Closer/Capper/Seamer

Pasteurizer

Labeler

Casing (Packaging)

Palletizer

Accumulation

Conveying

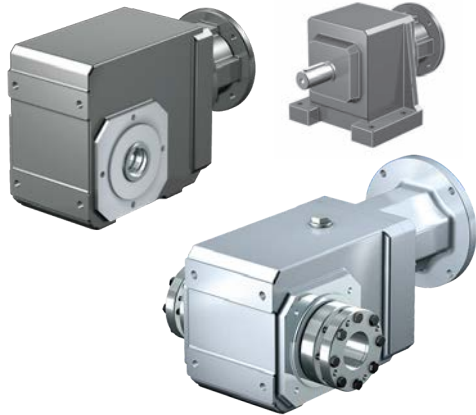
Inspection/Detecting

Many more - ***We have the experience and product knowledge to solve your problems!***



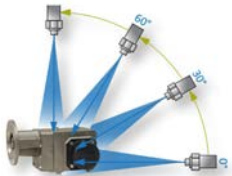
PRODUCTS OFFERED BY STOBER

HELICAL SOLUTIONS



BENEFITS

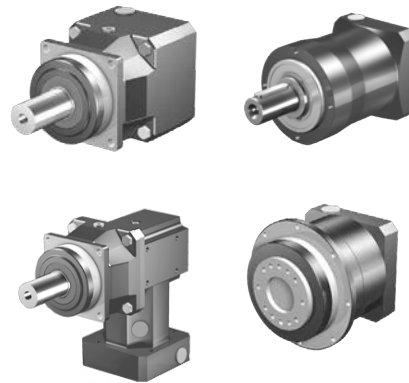
3 YEAR WARRANTY



IP69K Certified to prevent water ingress

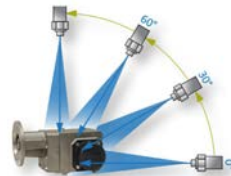
Available with corrosion resistant or food duty packages to withstand harsh washdowns

PLANETARY SOLUTIONS



BENEFITS

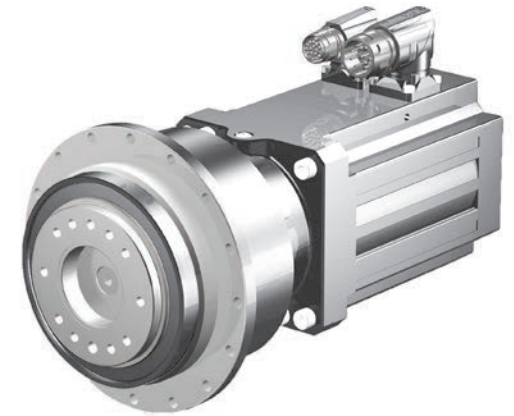
5 YEAR LIMITED WARRANTY



IP69K Compliant to prevent water ingress

Available with food duty packages to withstand harsh washdowns.

GEARED MOTOR SOLUTIONS



BENEFITS

2 YEAR WARRANTY

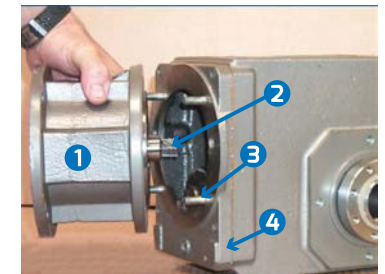
Geared motors can be supplied with food duty paint and food duty lubrication to handle harsh environments.

Preventive Maintenance Cost Savings Opportunity

MOTOR ADAPTER OR INPUT MODULE REPLACEMENT

The input is the weakest part of any reducer due to the application input speed versus output speed. A simple solution to save maintenance budget on aging STOBER reducers in plants is to replace only the input.

Example as follows: Assuming a new reducer price is \$1500, the replacement MR or input module is \$150. You do not have to do a store room transaction for a replacement reducer, or remove the reducer from the line. Changing the input module takes <1 hour, saving labor.



1- Motor Adapter 3- Stud
2- Input Pinion 4- Cover



THE STOBER ADVANTAGE

- ▶ Easy removal of gearbox for replacing motors
- ▶ Energy efficiency
- ▶ Inventory reduction (Prime List)
- ▶ IP69K
- ▶ Longer life
- ▶ No Maintenance and No Leaks
- ▶ Fast Delivery, Emergency Shipments Available, 24/7/365 Support
- ▶ Any Horizontal Mounting
- ▶ Industry leading warranty



**Optimizing Beverage
Plants since 1997**

**ALL THIS ADDS UP TO
LEAST EXPENSIVE GEARBOX
YOU'LL EVER OWN**

CORROSION RESISTANT DUTY- Moderately Wash Down Applications

- Stainless Steel Hardware – Plastic Covers
- Multilayered 316 Stainless Steel Epoxy Coating
- Mobil 600XP220 Mineral Oil
- Dual output seals and an O-ring on the input create a tight seal to prevent water ingress

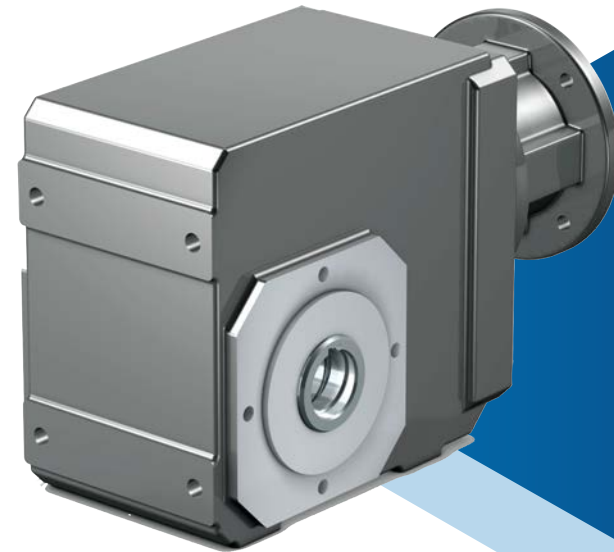


CUSTOMER CHALLENGE

Brewery had thousands of SKUs in their storeroom, consuming space and capital budget.

THE STOBER SOLUTION

STOBER optimized their SKUs to 32 part numbers, allowing them to use the same gearbox in multiple locations, saving millions of dollars annually.



STOBER

1781 Downing Drive
Maysville, Kentucky

www.stober.com

1.800.711.3588



STOBER 
CONFIGURATOR

configurator.stober.com