

Assembly instructions

Adjusting the bearing clearance when attaching components to planetary gear units



STÖBER ANTRIEBSTECHNIK GmbH & Co. KG
www.stober.com

GERMANY
Tel.: ++49 7231 582-0

1 General instructions

This document contains instructions for adjusting the bearing clearance when attaching components such as a motor adapter, motor or right-angle gear unit to a STÖBER P planetary gear unit.

Note also the technical documentation for all affected components.

NOTICE

Material damage!

If the bearing clearance between the planetary gear unit and the attached component is not correctly adjusted, the result may be bearing damage or inadmissibly high rotational play.

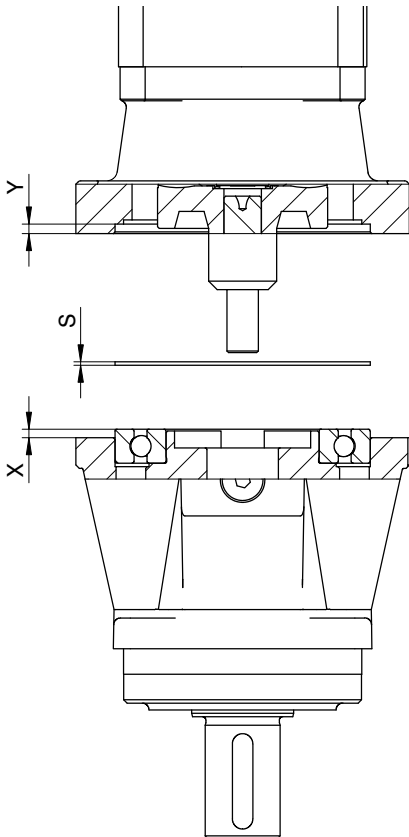
- ▶ Adjust the bearing clearance according to the instructions in this document.

4. Position the selected adjusting washers on the bearing of the planetary gear unit.
5. Mount the attached component on the planetary gear unit. Note also the corresponding technical documentation.

2 Adjusting the bearing clearance

Adjust the bearing clearance as follows:

1. Determine dimensions X and Y in mm with depth calipers based on the following drawing.



2. Determine the thickness S of the required adjusting washers: $Y - X = S$ (tolerance $-0.02/+0.03$ mm).
For example: $S = 2.85 \text{ mm} - 2.5 \text{ mm} = 0.35 \text{ mm}$
3. Select the adjusting washers with the required thickness from the package of adjusting washers included with delivery. If necessary combine several adjusting washers. For example, if $S = 0.35 \text{ mm}$, select adjusting washers with a thickness of 0.25 mm and 0.1 mm .