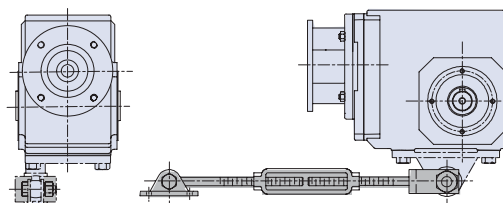




# STÖBER TORQUE ARM MOUNTING OPTIONS

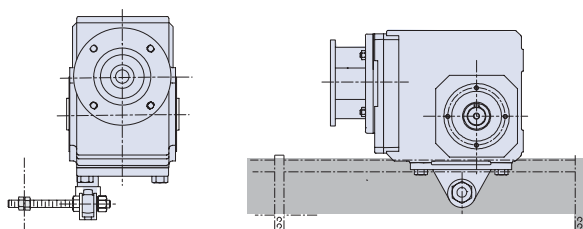
## 1: Torque Arm Bracket with Turnbuckle Torque Arm

This method uses a turnbuckle assembly that pivots from the torque arm bracket to mount to an acceptable location.



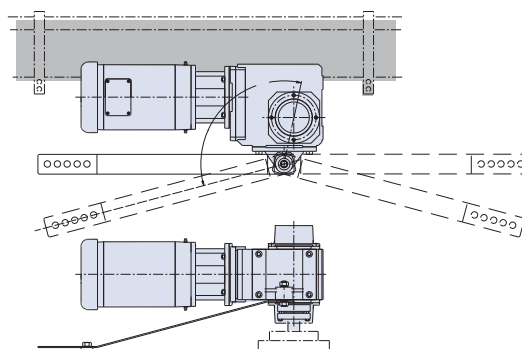
## 2: Torque Arm Bracket with Threaded Rod Torque Arm

This method uses a threaded rod through the torque arm bracket that is bolted to the machine frame.



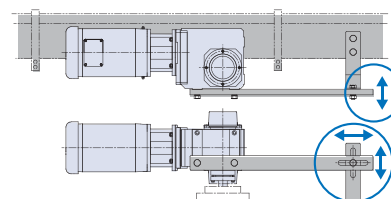
## 3: Torque Arm Bracket with Fabricated Steel Torque Arm

The torque arm bracket can be ordered with the right angle reducer and the torque arm fabricated from thin steel by the customer to mount in an acceptable location.



## 4: Fabricated Torque Arm

Using the mounting holes in the reducer housing, a torque arm can be fabricated to mount directly to the machinery. Notice that the fabrication must be 2 pieces with a slot in each piece to allow the connecting bolt to move in all directions.

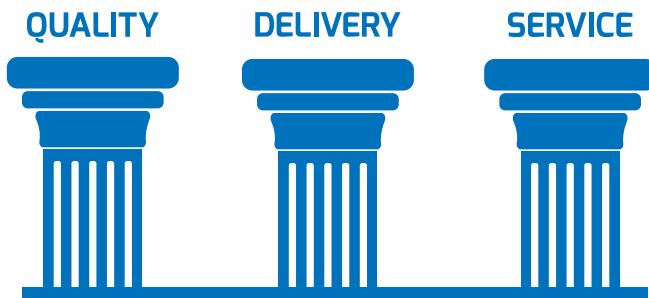






# STOBER

## Our Three Pillars


STOBER is your **trusted partner** in providing the ultimate customer experience. From unsurpassed quality to rapid response support to fast delivery, we are the **gold standard** for gearboxes.

World's Toughest Gearbox  
Best components and quality



Quick Delivery  
Build & Ship in 1 Day



24/7, 365 Support  
Real people all the time



**STOBER**   
CONFIGURATOR

With the new STOBER Configurator, engineers and designers will save time in product selection and designing. Everything is a simple click away!

## 9.1 YEARS

Average mean time to failure for STOBER gearboxes in 24/7 harsh environment application.

Asset reliability means you can depend on a STOBER gear reducer for years, increasing profits and surpassing plant efficiency and targets.

