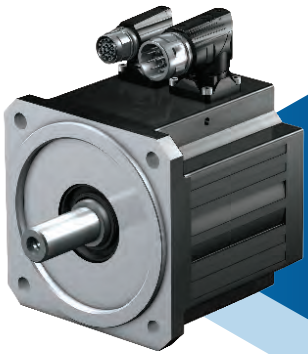
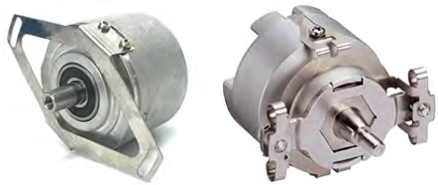


# Servo EZ Motor

STOBER's EZ is a brushless, permanent magnet, and electronically commutated motor with different power profiles. The optimized design of the stator and rotor allow for for extremely low torque ripple and high power density.



## VARIETY OF OPTIONS



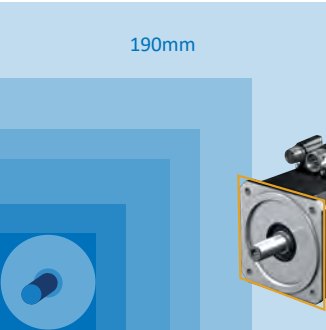
- Multiple windings
- Absolute feedback types
- Single cable technology
- Holding brakes
- Output shaft configurations
- Thermal winding protections
- Cooling methods

## RANGE OF PERFORMANCE

Model	Flange Size (mm)	Number of Available Stack Lengths	Nominal Torque Range (Nm)
EZ2	55	2	0.40 – 0.61
EZ3	72	3	0.89 – 2.07
EZ4	98	3	2.30 – 6.90
EZ5	115	4	3.40 – 13.50
EZ7	145	4	5.20 – 16.40
EZ8	190	3	10.50 – 43.70

Maximum Torque Range (Nm)	Maximum Speed (RPM)	Drive Input Voltage (VAC)
1.48 – 2.70	6000	220-480
2.80 – 7.00	6000	220-480
8.50 – 29.00	6000	220-480
16.00 – 37.00	6000	220-480
20.00 – 104.00	6000	220-480
100.00 – 205.00	4500	220-480

## RANGE OF SIZE

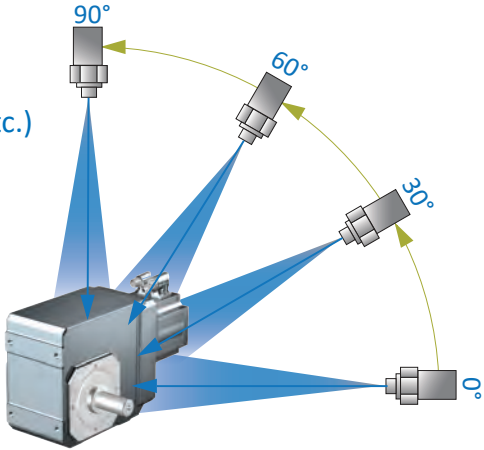


ASSEMBLED IN  
USA WITH 1 WEEK  
LEAD TIME

## WASHDOWN OPTIONS

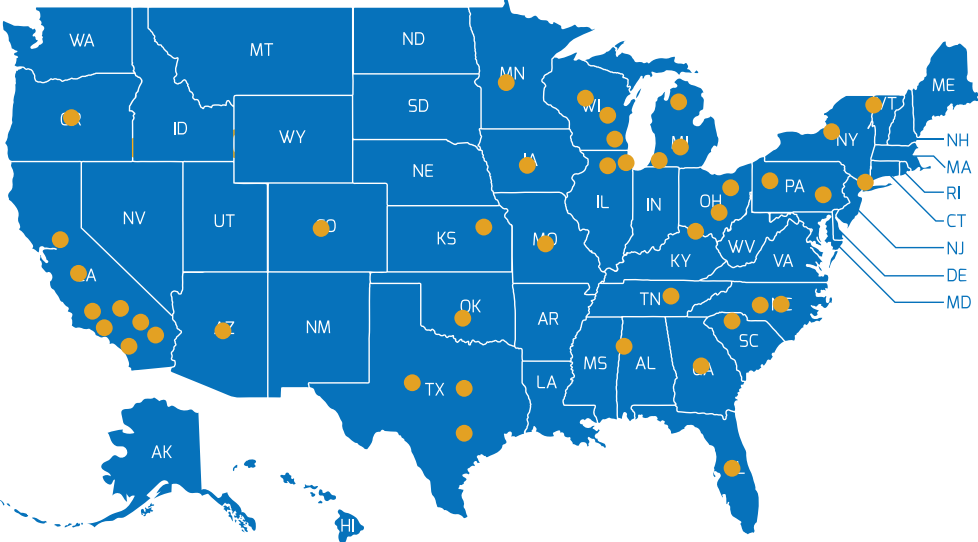
Regardless of your application washdown requirements, STOBER geared motors are designed to last in harsh environments such as food and beverage, pharmaceuticals, and more.

- Options exist for:
- Hardware (output, connectors, etc.)
  - Coatings
  - Lubrication



STOBER motors and geared motors have component-wise ingress protection rating of IP66, but with the utilization of environmentally sealed cables, you can achieve greater protection in your application.

## OVER 80+ FIELD REPS ARE JUST ONE CALL AWAY



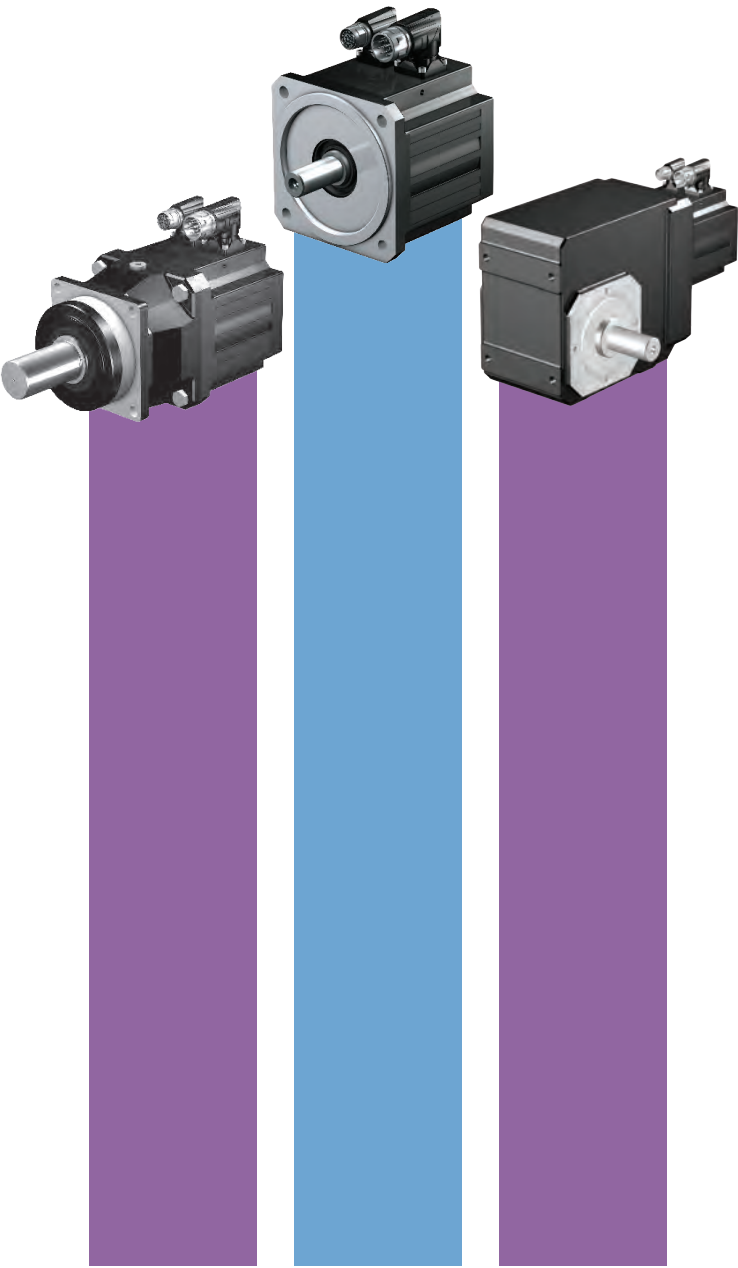
(606) 759-5090  
SALES@STOBER.COM  
www.stober.com



Item No: 442937

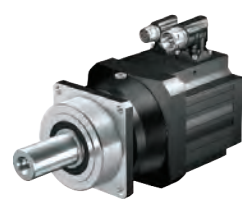


# STOBER MOTORS AND GEARED MOTORS



# Servo Geared Motors

Breadth of Product - Solutions for Every Application



P\_EZ



PH\_EZ  
PHQ\_EZ



PE\_EZ



C\_EZ



F\_EZ



K\_EZ



KL\_EZ



PK\_EZ



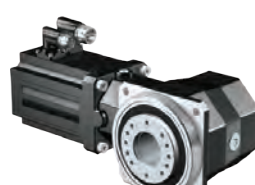
PKX\_EZ



PHKX\_EZ



PHK\_EZ



KS\_EZ

## ACCELERATION TORQUE

Up to 43,000 Nm

## BACKLASH

≤1-25 arcmin

## Options

### Packages for Different Environments

STOBER has multiple hardware, coating and lubrication options to suit the needs of your application.



Standard



Corrosion  
Resistant

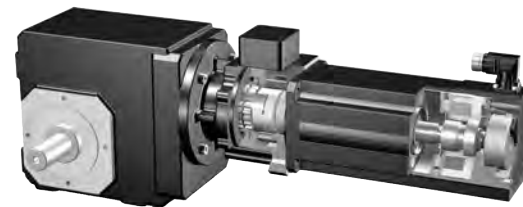


Food  
Duty



### Integrated Safety Brake - ServoStop™

- Dynamic braking during power stops or emergency stops in hazardous situations
- Ideal for applications with vertical axes with gravity loads
- Allows for dismounting of servo motor even with brake engaged
- Meets EN ISO 13849 safety standard



### Rack and Pinion Drives

- Options for high force or high speed
- Reduce linear backlash
- Optimize inertia mismatch through various sizes and pinion options
- Mod. 2-10 available



## PLUG 'N PLAY CONNECTIVITY WORKS WITH YOUR DRIVE

STOBER motors and geared motors work with B&R, Beckhoff, Bosch, Control Techniques, Kollmorgen, Rockwell, and Siemens drives, as well as other third-parties compatible with EnDat, Hiperface DSL, and resolver feedback types!

## Benefits of STOBER



### MORE COMPACT

- Save up to 45% on length with a STOBER geared motor
- Eliminate extra components for an even smaller envelope



### ADAPTABILITY – OPTIONS FOR EVERY APPLICATION

- Planetary, helical, inline, and right angle
- Mounting flexibility with various output options and housing styles
- More ratios
- Higher speeds
- Variety of encoder options
- Multiple brake options



### PACKAGED UNIT

- Eliminate extra components
- No premature failure due to installation errors
- Aftermarket repair and sizing support readily available
- Order with one part number



### MORE DYNAMIC

- Higher torque density
- 160% reduction in required torque for acceleration/deceleration
- Less inertia and heat due to fewer wear components



### RUNS COOLER

- Up to 14° F cooler than competitors
- Save on energy and machine components



# STOBER



## CONFIGURATOR

With the STOBER Configurator, engineers and designers will save time in product selection and designing. Everything is a simple click away!