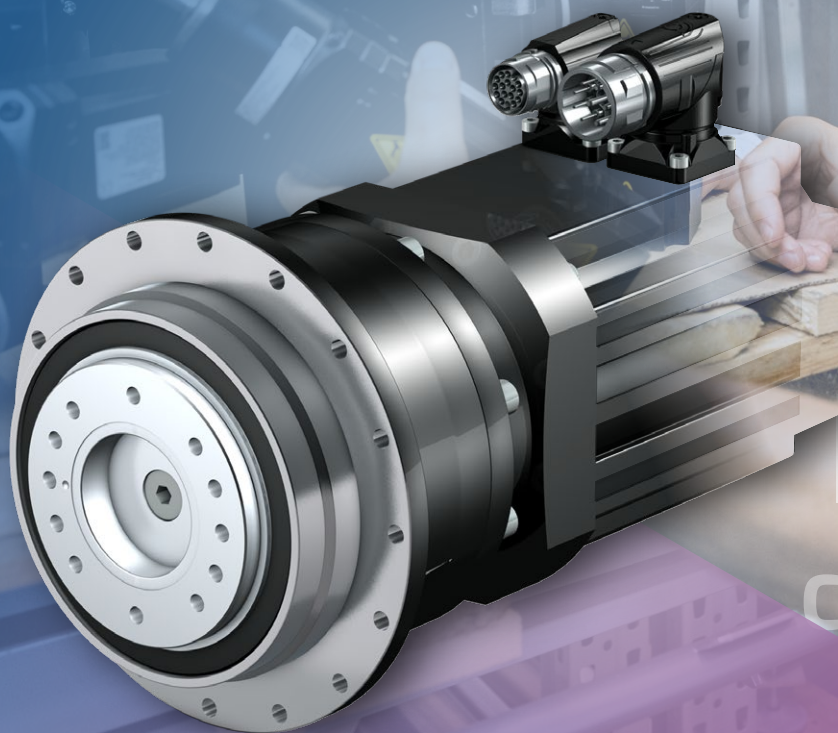


**MORE**  
**THAN JUST A GEARBOX**



PROFESSIONAL  
INDIVID-  
UAL  
COLLABO-  
RATIVE

High-performance. Precise. Perfect fit.

## **Planetary gear units from STÖBER.**

- The most compact planetary geared motors on the market.
- Superior precision and performance.
- Exceptional variety of combinations and options.
- Extreme ruggedness.
- Ready-to-install drive solutions for machine tools and packaging machines as well as applications in automation and robotics.



**STÖBER**

[www.stober.com](http://www.stober.com)

# Planetary gear units from STÖBER.

## HIGH-PERFORMANCE

Type	i	M <sub>Zacc</sub> [Nm]	n <sub>1MAXZB</sub> [min <sup>-1</sup> ]	Δ <sub>g2</sub> [arcmin]	C <sub>2</sub> [Nm/arcmin]
P23	4 – 100	21 – 25	8000	6,0 – 8,0	1,6 – 1,9
P33	3 – 100	50 – 80	7000 – 8000	2,0 – 5,0	4,3 – 5,4
P43	3 – 100	100 – 145	6000 – 8000	2,0 – 5,0	9,0 – 13
P53	3 – 100	200 – 385	5000 – 8000	1,0 – 4,0	24 – 34
P73	3 – 100	500 – 840	4000 – 7000	1,0 – 4,0	54 – 65
P83	3 – 100	1200 – 2000	3000 – 6000	1,0 – 4,0	148 – 178
P93	4 – 100	2200 – 3450	3000 – 4500	3,0 – 4,0	321 – 407
PH33	5 – 100	60 – 85	8000	2,0 – 4,0	8,9 – 15
PH43	4 – 100	110 – 189	5000 – 8000	1,0 – 3,0	20 – 36
PH53	4 – 100	288 – 418	5000 – 8000	1,0 – 3,0	52 – 91
PH73	4 – 100	550 – 924	4000 – 7000	1,0 – 3,0	121 – 207
PH83	4 – 100	1380 – 2300	3500 – 6000	1,0 – 3,0	333 – 534
PHQ43	5,5 – 55	200 – 247	6000 – 8000	1,0 – 3,0	38 – 42
PHQ53	5,5 – 55	480 – 562	5000 – 8000	1,0 – 3,0	95 – 102
PHQ73	5,5 – 550	900 – 1050	5000 – 7000	1,0 – 3,0	213 – 224
PHQ83	5,5 – 550	2700 – 3300	4000 – 6500	1,0 – 3,0	669 – 711

### Compact and dynamic!

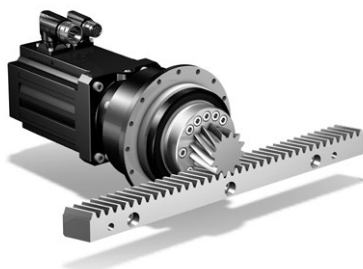
Small installation space, simple assembly and maximum drive dynamics.

Up to 60 % more acceleration torque!



## PRECISE

Excellent housing and gearing quality thanks to innovative production technologies. Maximum positioning accuracy with minimal backlash as low as  $\leq 1$  arcmin!



### Highly precise, low-backlash rack and pinion drives.

With radial runout as low as  $\leq 10 \mu\text{m}$ !

## PERFECT FIT

### Perfectly adapted to any requirement!

Flexible machine design thanks to a very large variety of combinations and options. Variable adapter designs make it possible to attach motors of a wide range of sizes.

