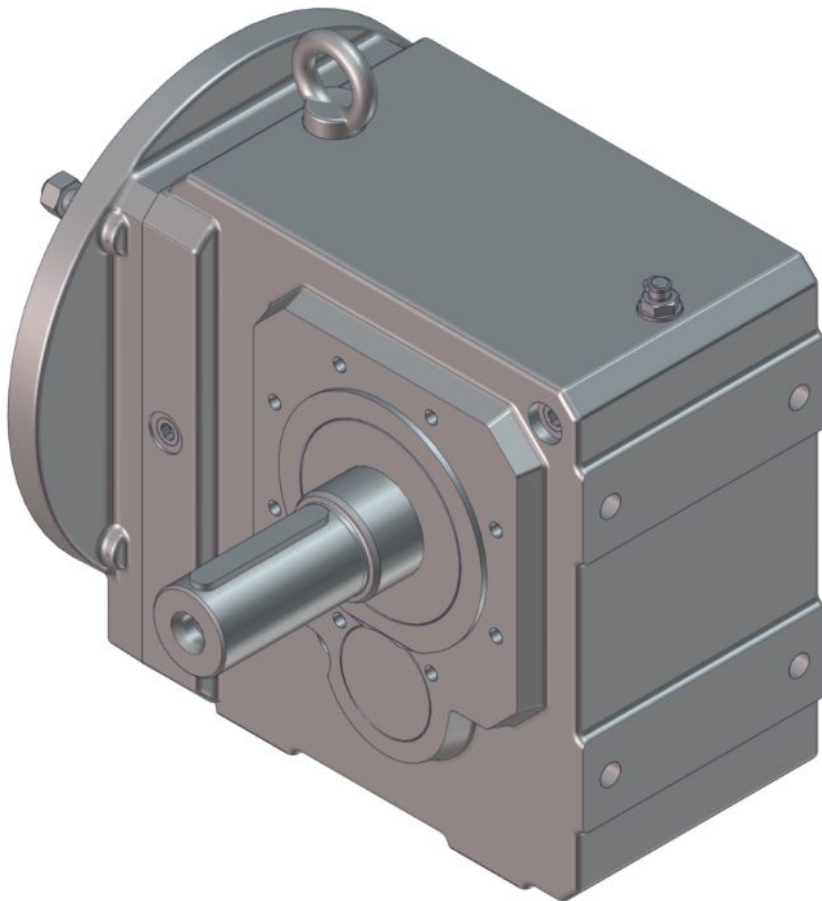


Replacement parts list

K6 helical bevel gear unit



[stober.com](https://www.stober.com)

en-US
03/2018
ID 443073_en.00

1 User information

This replacement parts list is intended to make ordering replacement parts easier; however, it cannot replace repair instructions.

Have the gear unit repaired only by STOBBER service or STOBBER service partners. Only use replacement parts delivered by STOBBER. Be aware that improper repair work may cause material damage and may void the manufacturer's warranty.

All standard versions of the gear unit are presented in this document. Using the nameplate, the type designation and your order documents, you can find the chapters that corresponds to your product. Places where a shim is pictured in the images may require multiple shims of varying thicknesses, depending on the tolerance.

Specify the type designation and serial number of the gear unit as well as the corresponding item number from this replacement parts list when ordering replacement parts.

1.1 Type designation

Sample code

K	9	1	3	A	G	0100
----------	----------	----------	----------	----------	----------	-------------

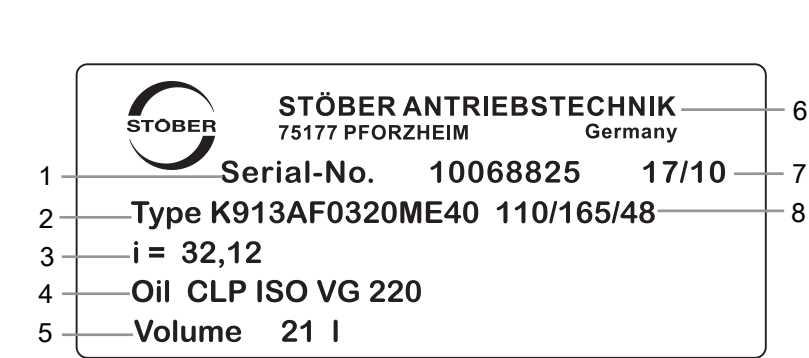
Explanation

Code	Designation	Design
K	Type	Helical bevel gear unit
9	Size	9 (example)
1	Generation	Generation 1
3	Stages	Three-stage
4		Four-stage
A	Shaft	Hollow shaft with keyway
S		Hollow shaft with shrink disk
V		Solid shaft
G	Housing	Pitch circle diameter
F		Round flange
NG		Base + pitch circle diameter
NF		Base + round flange
GD		Pitch circle diameter + torque arm
NGD		Base + pitch circle diameter + torque arm
0100	Transmission ratio (i x 10)	i = 10 (example)
AW	Attachment groups	AW drive shaft
D		D asynchronous motor
ED		ED/EK synchronous servo motor
EZ		EZ synchronous servo motor
IE2D		IE2 asynchronous motor
MB		MB motor adapter with brake
ME		ME motor adapter with EasyAdapt coupling
MQ		MQ square motor adapter
MR		MR round motor adapter
R		R variable speed gear unit

The type designation of PHQK gear units (PHQ planetary gear unit combined with K helical bevel gear unit) is explained in the documentation for the PHQK gear unit.

1.2 Nameplate

An example gear unit nameplate is explained in the figure below.



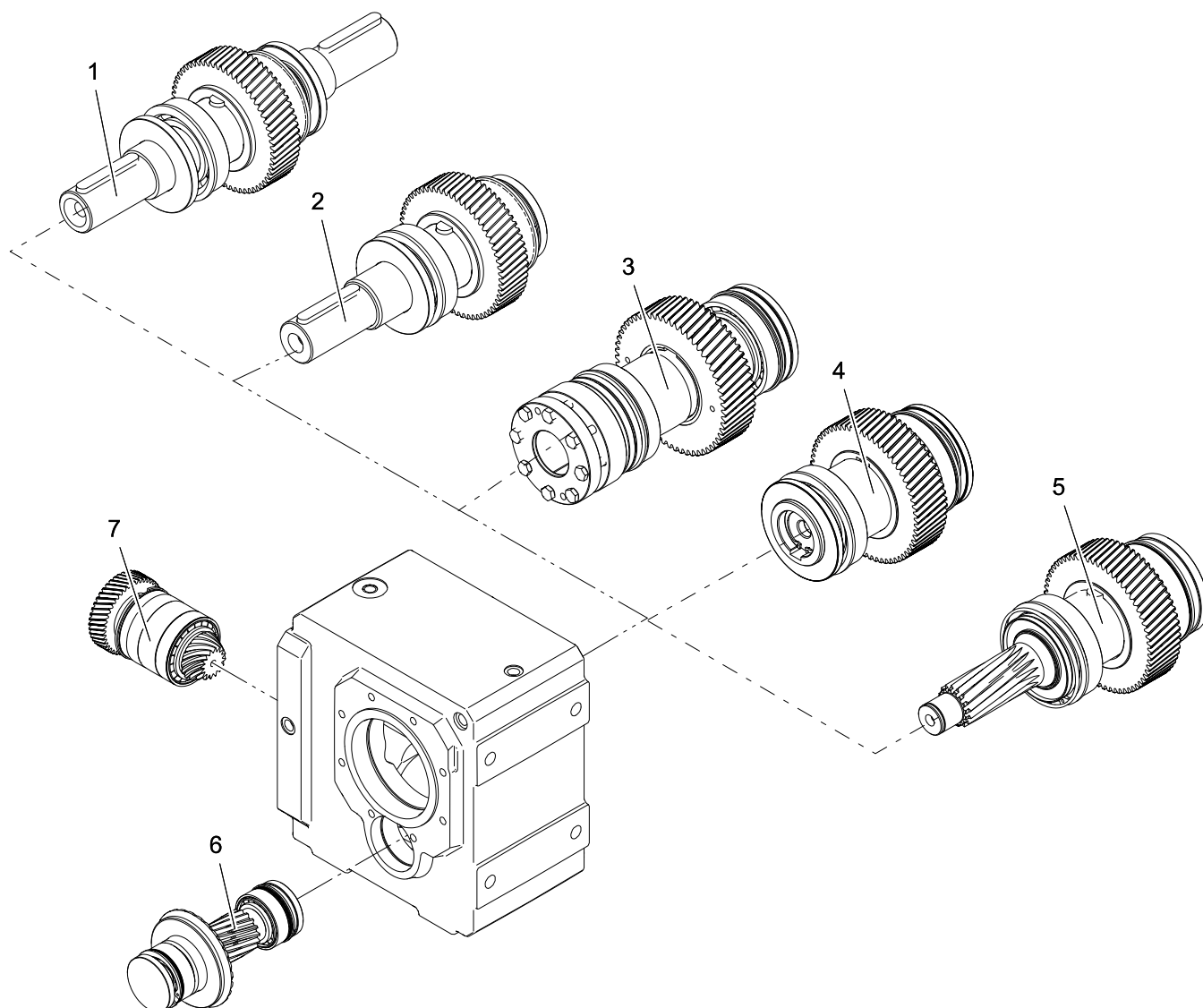
1	Serial number of the gear unit	2	Type designation
3	Gear ratio of the gear unit	4	Lubricant specification
5	Lubricant fill volume	6	Name of manufacturer
7	Date of manufacture (year/calendar week)	8	Dimensions of the motor adapter

1.3 Additional documentation

Additional documentation related to the product can be found at <http://www.stoeber.de/en/download>

2 Shafts

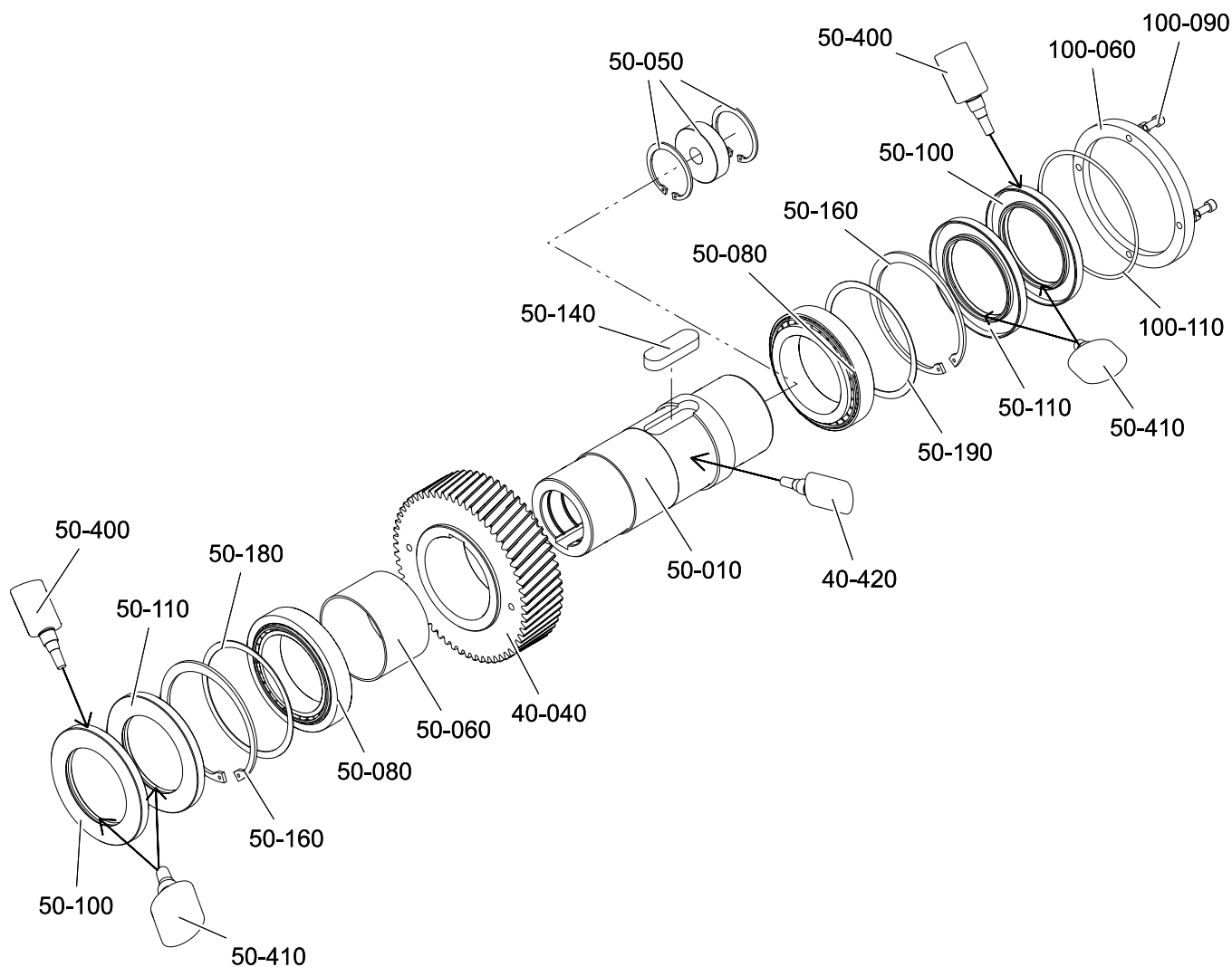
2.1 Overview of shafts



No.	Designation	No.	Designation
1	Solid shaft on both sides	2	Solid shaft
3	Hollow shaft with shrink disk	4	Hollow shaft
5	Solid shaft for attachment to PH	6	Countershaft
7	Pinion shaft		

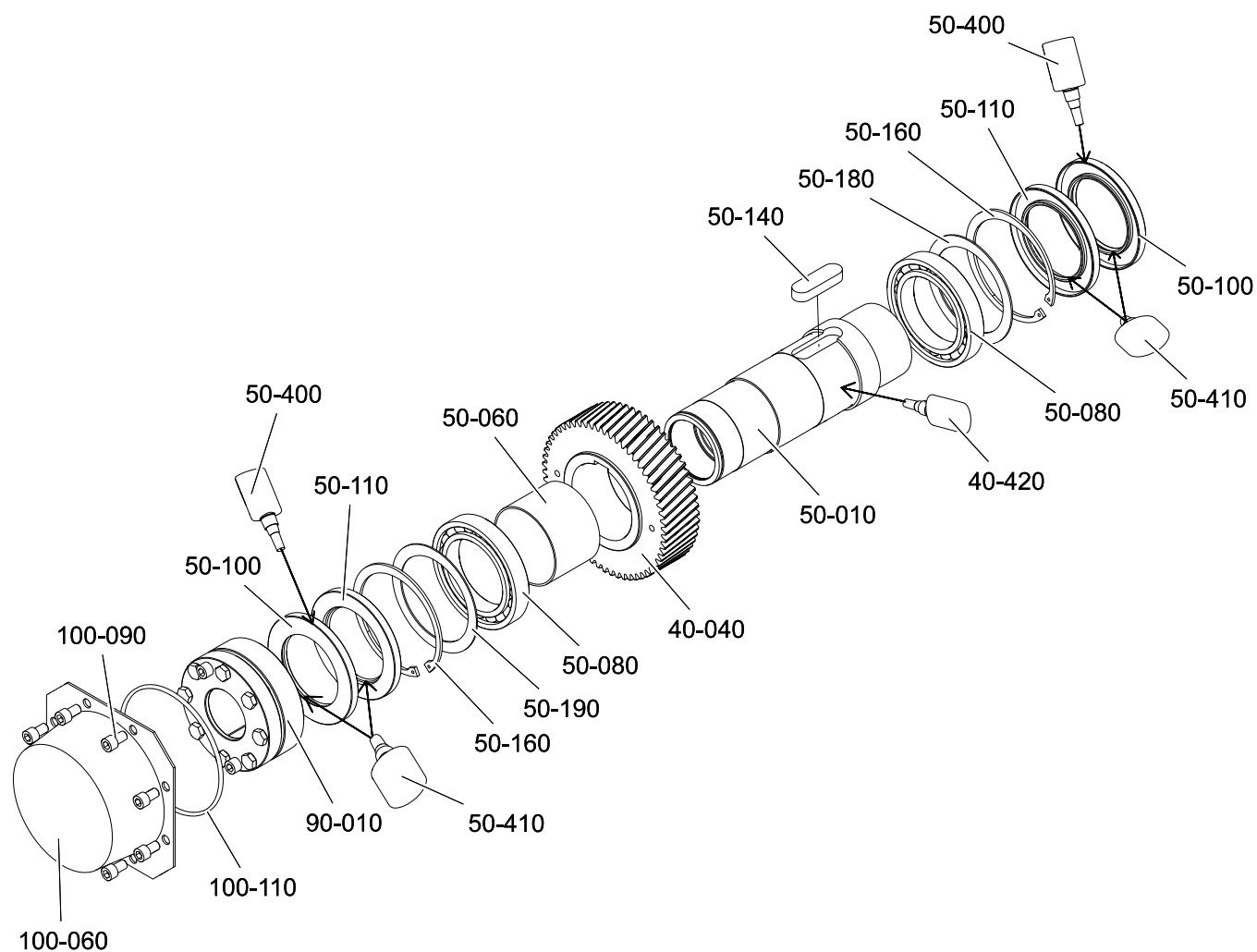
The shafts can also be installed turned by 180° based on the order (except for the pinion shaft).

2.2 Hollow shaft



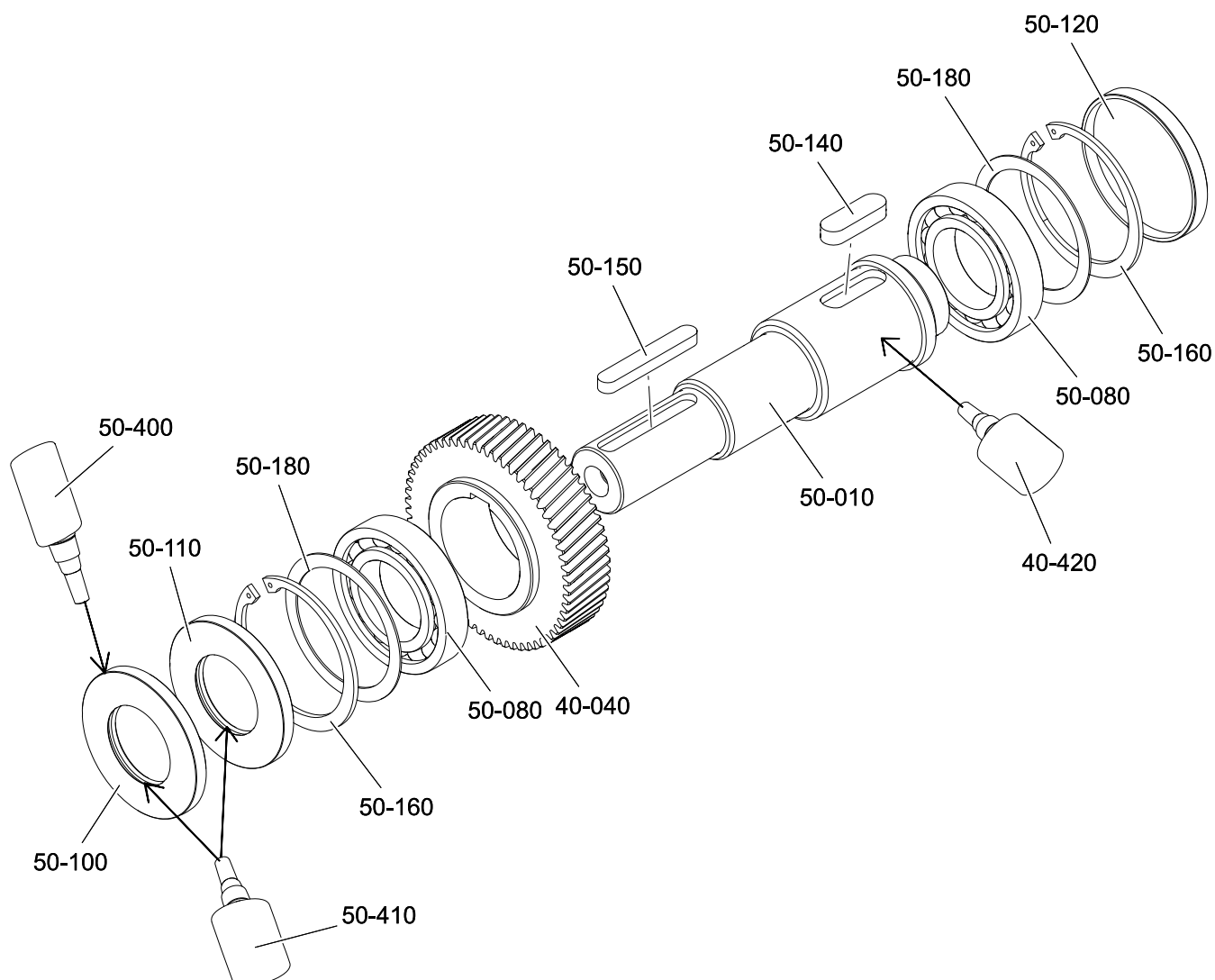
Item No.	Designation	Item No.	Designation
40-040	Gear	40-420	Adhesive
50-010	Hollow shaft	50-050	Dismounting disk (complete)
50-060	Spacer bushing	50-080	Rolling bearing
50-100	Shaft seal ring	50-110	Shaft seal ring (optional)
50-140	Feather key	50-160	Retaining ring
50-180	Shim	50-190	Shim
50-400	Adhesive (for FKM shaft seal rings)	50-410	Lubricant
100-060	Cover (optional)	100-090	Cylinder screw (optional)
100-110	O-ring (optional)		

2.3 Hollow shaft with shrink disk



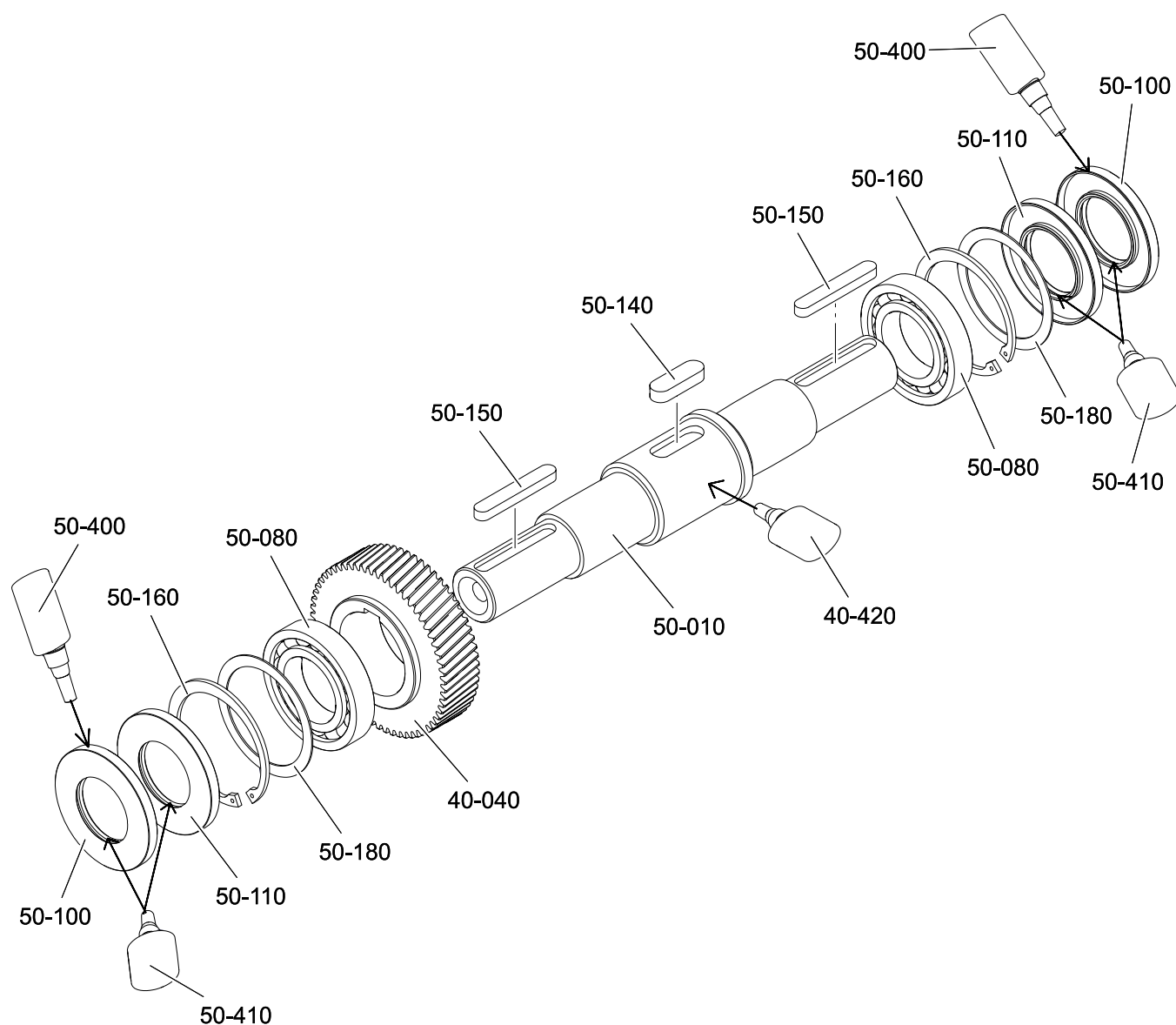
Item No.	Designation	Item No.	Designation
40-040	Gear	40-420	Adhesive
50-010	Hollow shaft	50-060	Spacer bushing
50-080	Rolling bearing	50-100	Shaft seal ring
50-110	Shaft seal ring (optional)	50-140	Feather key
50-160	Retaining ring	50-180	Shim
50-190	Shim	50-400	Adhesive (for FKM shaft seal rings)
50-410	Lubricant	90-010	Shrink disk (complete)
100-060	Cover (optional)	100-090	Cylinder screw (optional)
100-110	O-ring (optional)		

2.4 Solid shaft



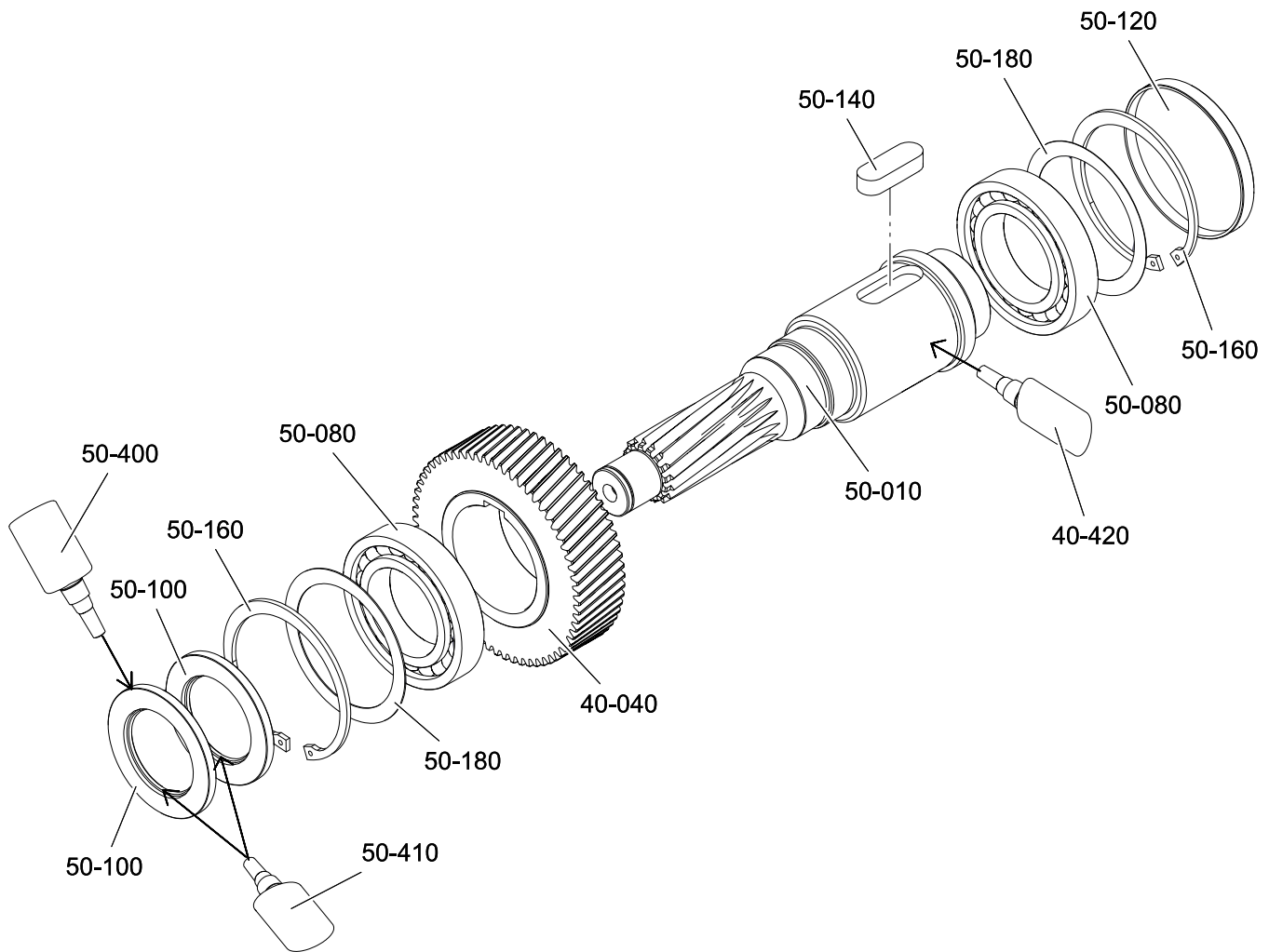
Item No.	Designation	Item No.	Designation
40-040	Gear	40-420	Adhesive
50-010	Solid shaft	50-080	Rolling bearing
50-100	Shaft seal ring	50-110	Shaft seal ring (optional)
50-120	Sealing cap	50-140	Feather key
50-150	Feather key	50-160	Retaining ring
50-180	Shim	50-400	Adhesive (for FKM shaft seal rings)
50-410	Lubricant		

2.5 Solid shaft on both sides



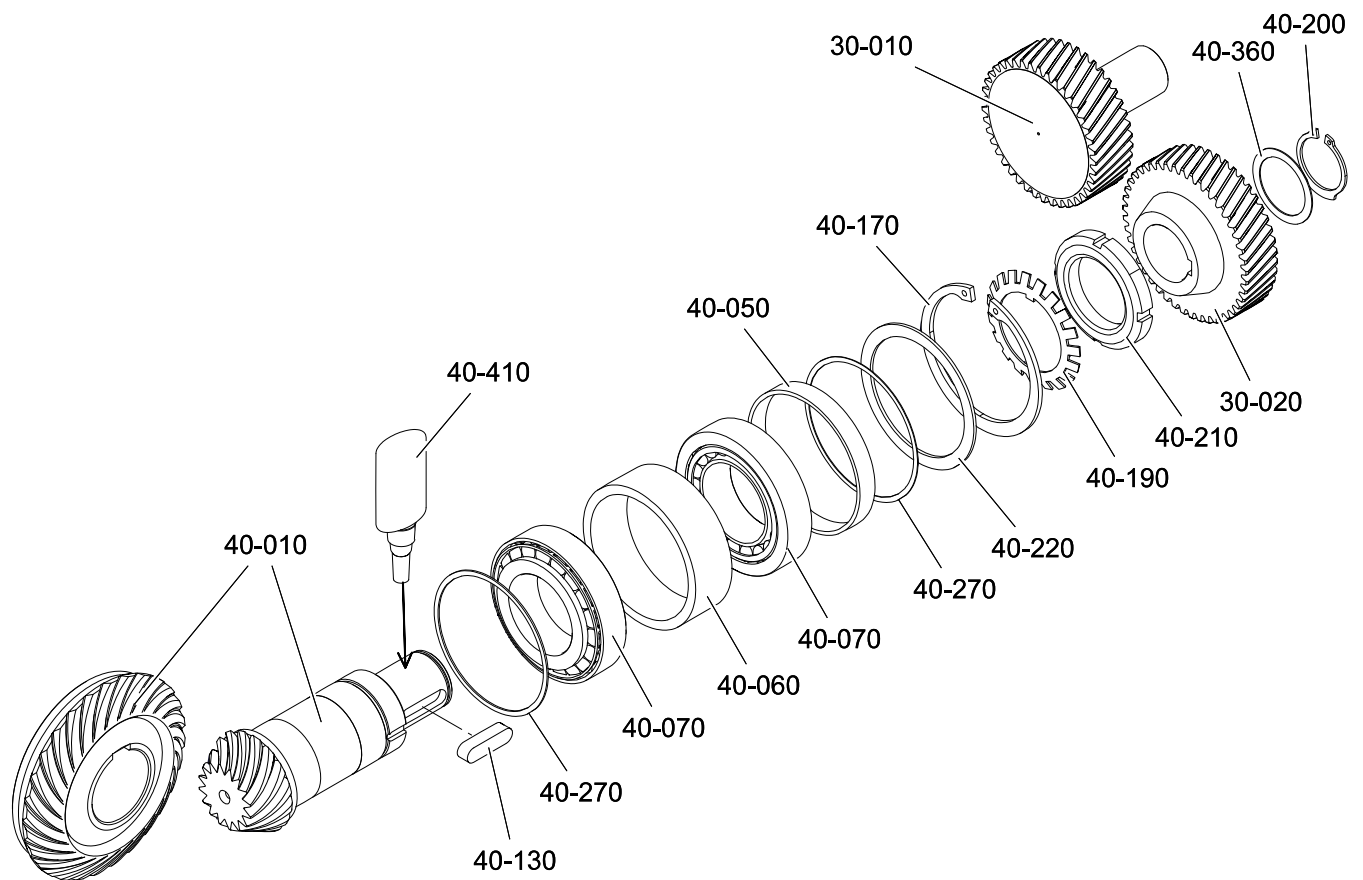
Item No.	Designation	Item No.	Designation
40-040	Gear	40-420	Adhesive
50-010	Solid shaft	50-080	Rolling bearing
50-100	Shaft seal ring	50-110	Shaft seal ring (optional)
50-140	Feather key	50-150	Feather key
50-160	Retaining ring	50-180	Shim
50-400	Adhesive (for FKM shaft seal rings)	50-410	Lubricant

2.6 Solid shaft for attachment of PH planetary gear unit



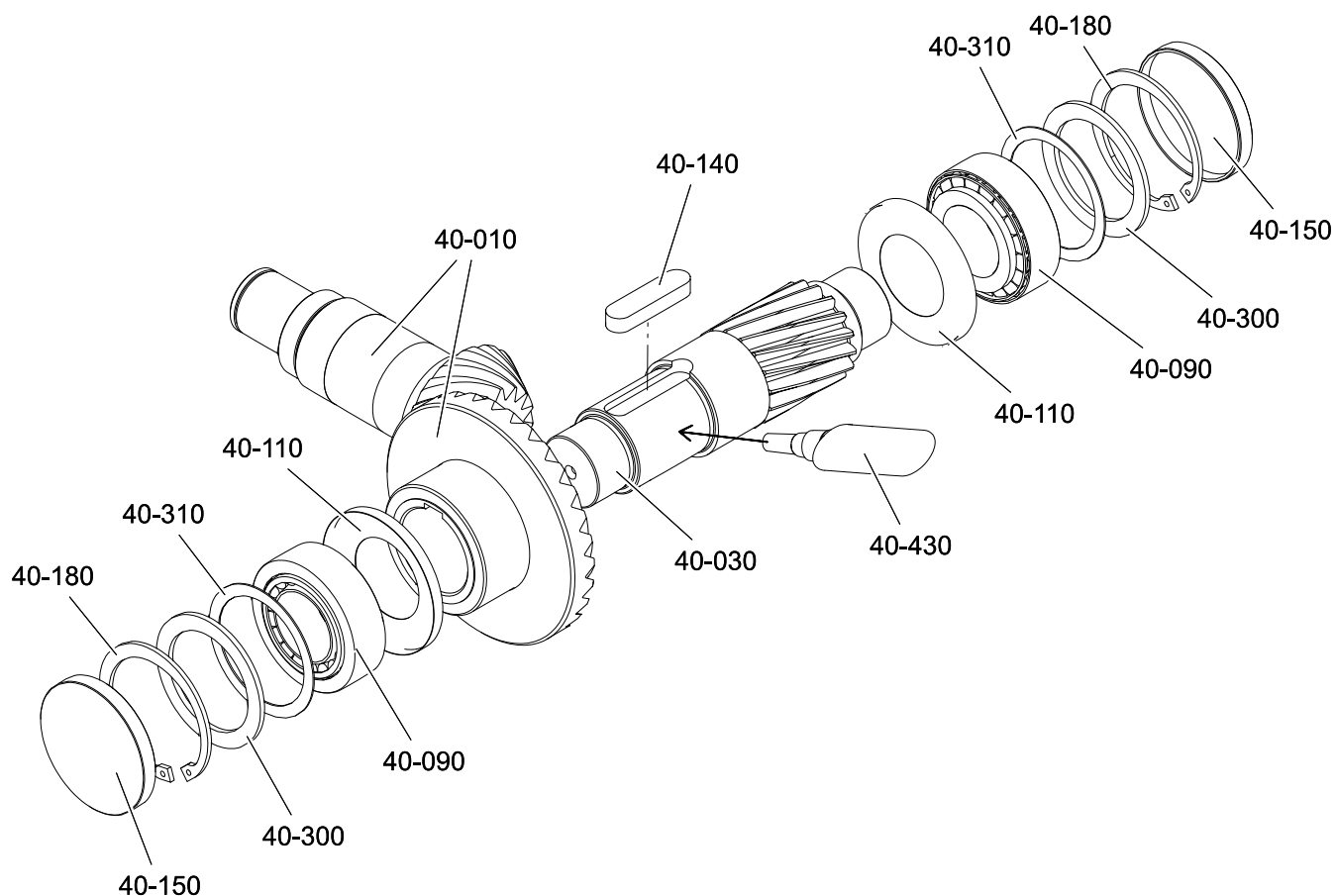
Item No.	Designation	Item No.	Designation
40-040	Gear	40-420	Adhesive
50-010	Solid shaft	50-080	Rolling bearing
50-100	Shaft seal ring	50-120	Sealing cap
50-140	Feather key	50-160	Retaining ring
50-180	Shim	50-400	Adhesive (for FKM shaft seal rings)
50-410	Lubricant		

2.7 Pinion shaft



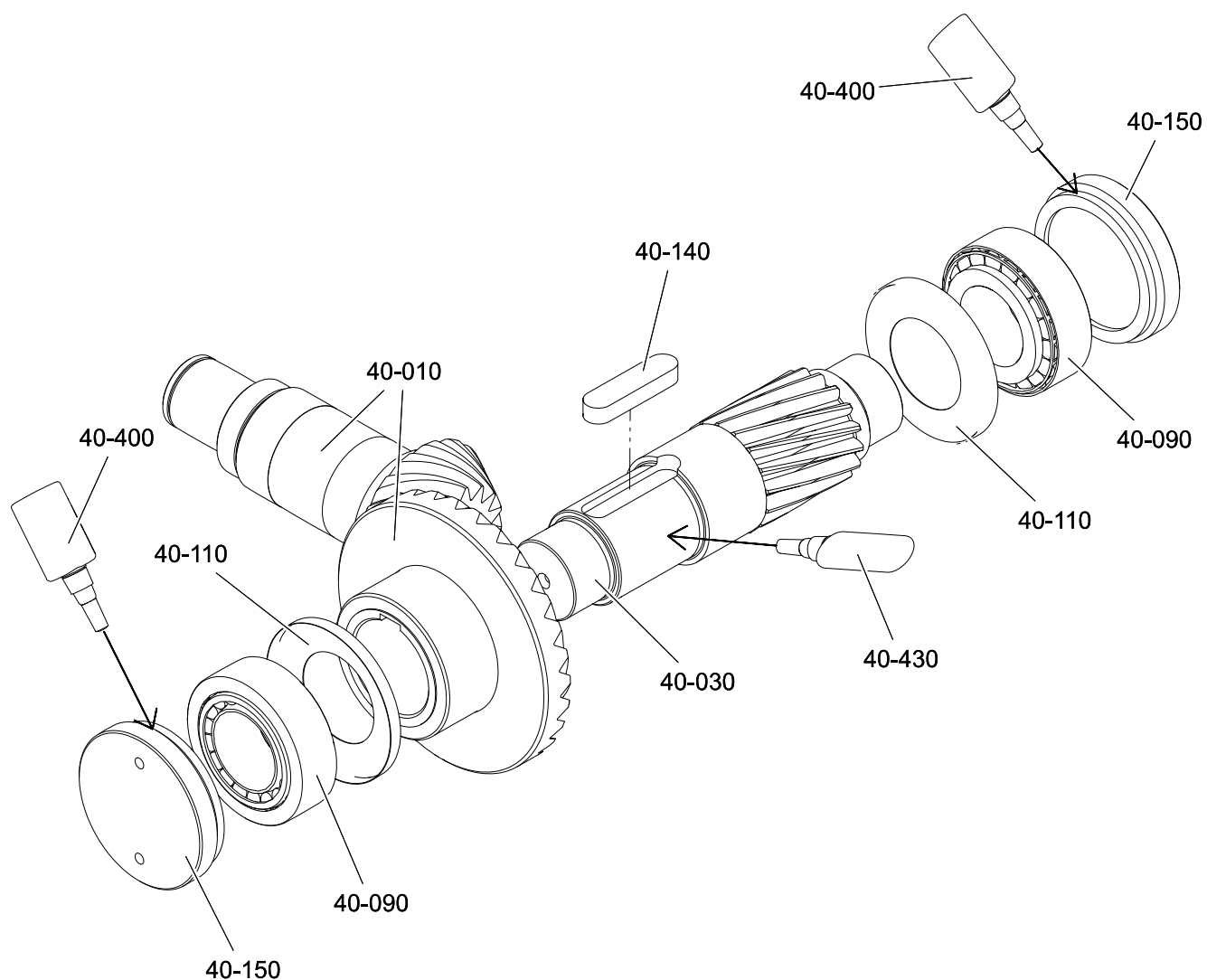
Item No.	Designation	Item No.	Designation
30-010	Pinion	30-020	Gear
40-010	Pinion shaft with crown gear	40-050	Spacer bushing
40-060	Spacer bushing	40-070	Rolling bearing
40-130	Feather key	40-170	Retaining ring
40-190	Safety plate	40-200	Retaining ring
40-210	Grooved nut	40-220	Shim
40-270	Shim	40-410	Adhesive

2.8 Countershaft (backlash standard or class II)



Item No.	Designation	Item No.	Designation
40-010	Pinion shaft with crown gear	40-030	Countershaft
40-090	Rolling bearing	40-110	Nilos ring (for EL3/EL4 installation position)
40-140	Feather key	40-150	Sealing cap
40-180	Retaining ring	40-300	Supporting ring
40-310	Supporting ring	40-430	Adhesive (for backlash class II)

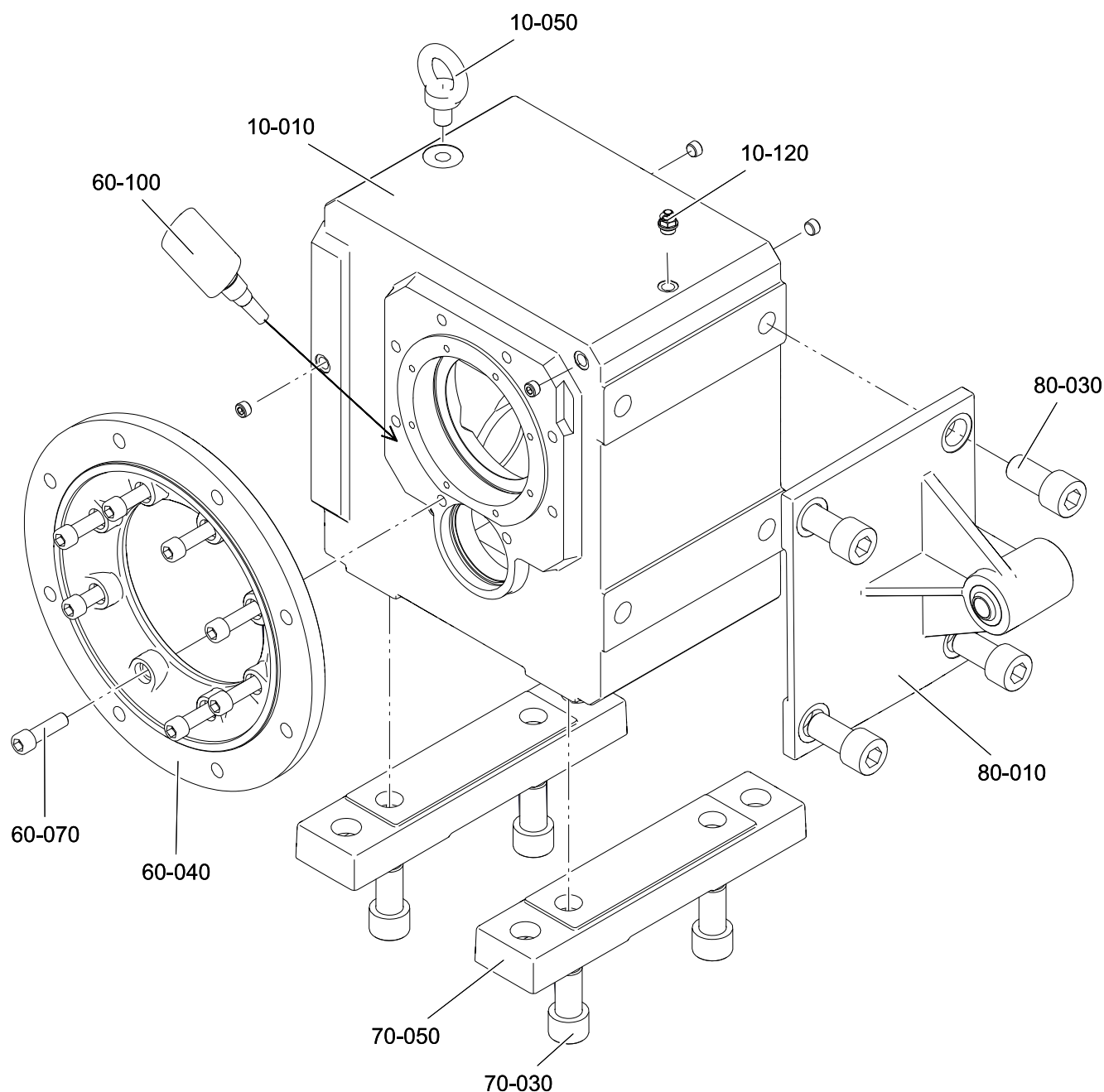
2.9 Countershaft (backlash class I)



Item No.	Designation	Item No.	Designation
40-010	Pinion shaft with crown gear	40-030	Countershaft
40-090	Rolling bearing	40-110	Nilos ring (for EL3/EL4 installation position)
40-140	Feather key	40-150	Threaded ring
40-400	Threadlocker	40-430	Adhesive

3 Housing types

3.1 Housing with flange, torque arm and baseboards



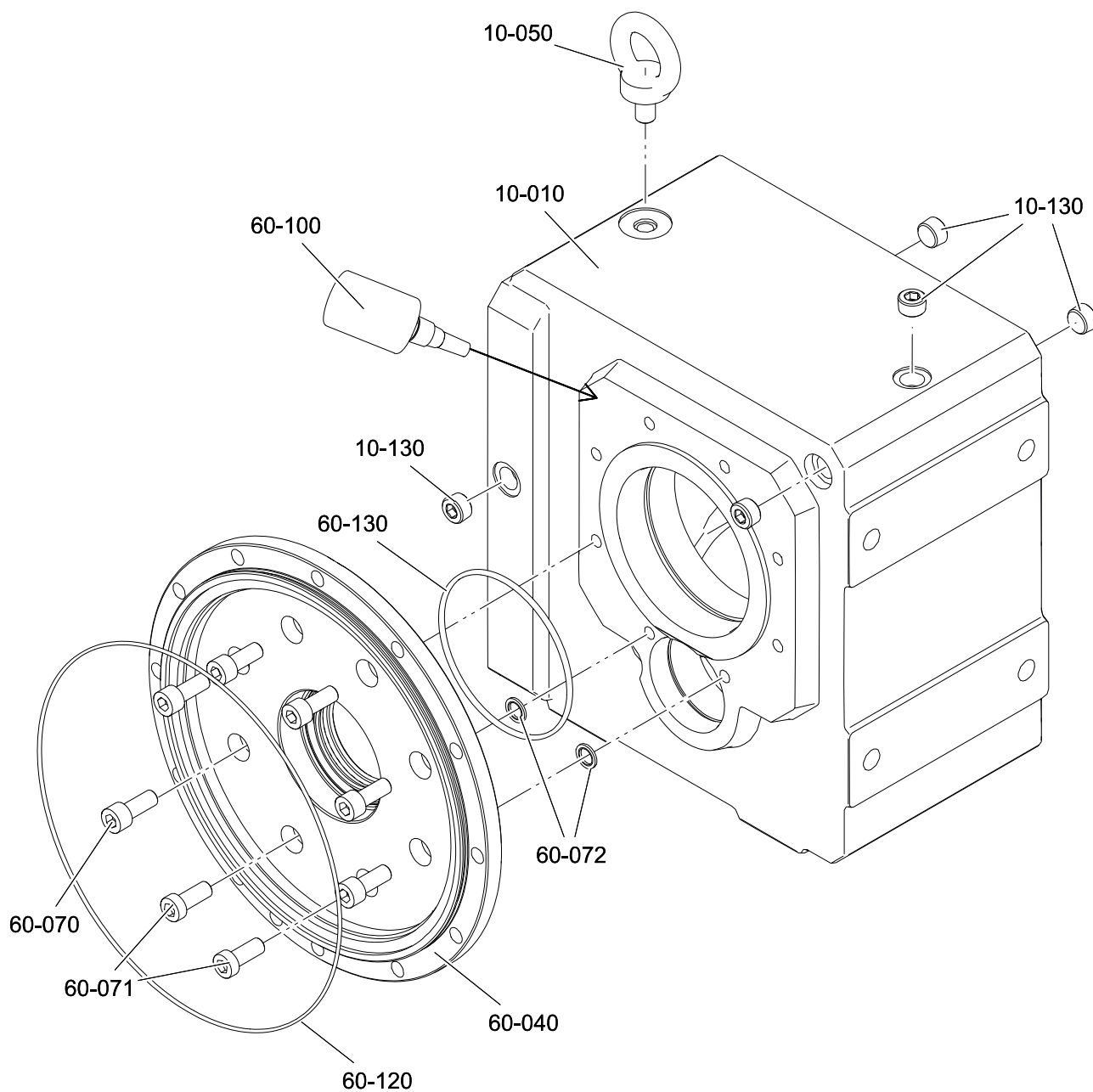
Item No.	Designation	Item No.	Designation
10-010	Gear unit housing	10-050	Eyebolt
10-120	Air release valve (position dependent on installation position)	10-130	Threaded sealing plug
60-040	Round flange (optional)	60-070	Cylinder screw (optional)
60-100	Surface seal (optional)	70-030	Cylinder screw (optional)
70-050	Baseboard (optional)	80-010	Torque arm (optional)
80-030	Cylinder screw (optional)		

The round flange can also be attached on the opposite side of the gear unit based on the order (4).

The torque arm can also be attached on gear unit side 1 or turned by 180° and attached based on the order.

The baseboards can also be attached on gear unit side 5 based on the order.

3.2 Housing with flange for attachment of PH planetary gear unit

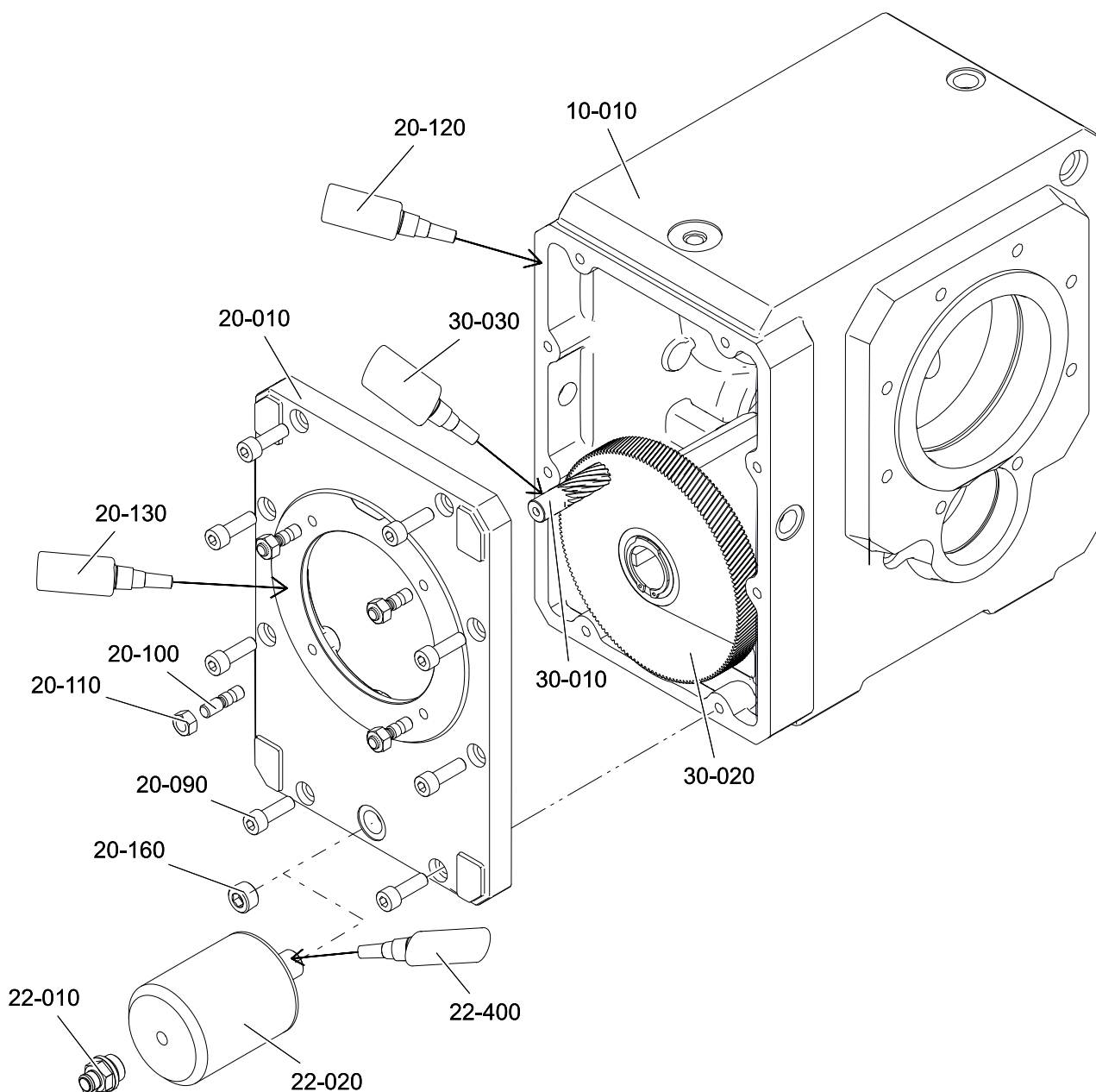


Item No.	Designation	Item No.	Designation
10-010	Gear unit housing	10 050	Eyebolt
10-130	Threaded sealing plug	60 040	Round flange
60-070	Cylinder screw	60 071	Cylinder screw
60-072	Seal ring	60 100	Surface seal
60-120	O-ring	60 130	O-ring

The round flange can also be attached on the opposite side of the gear unit based on the order (4).

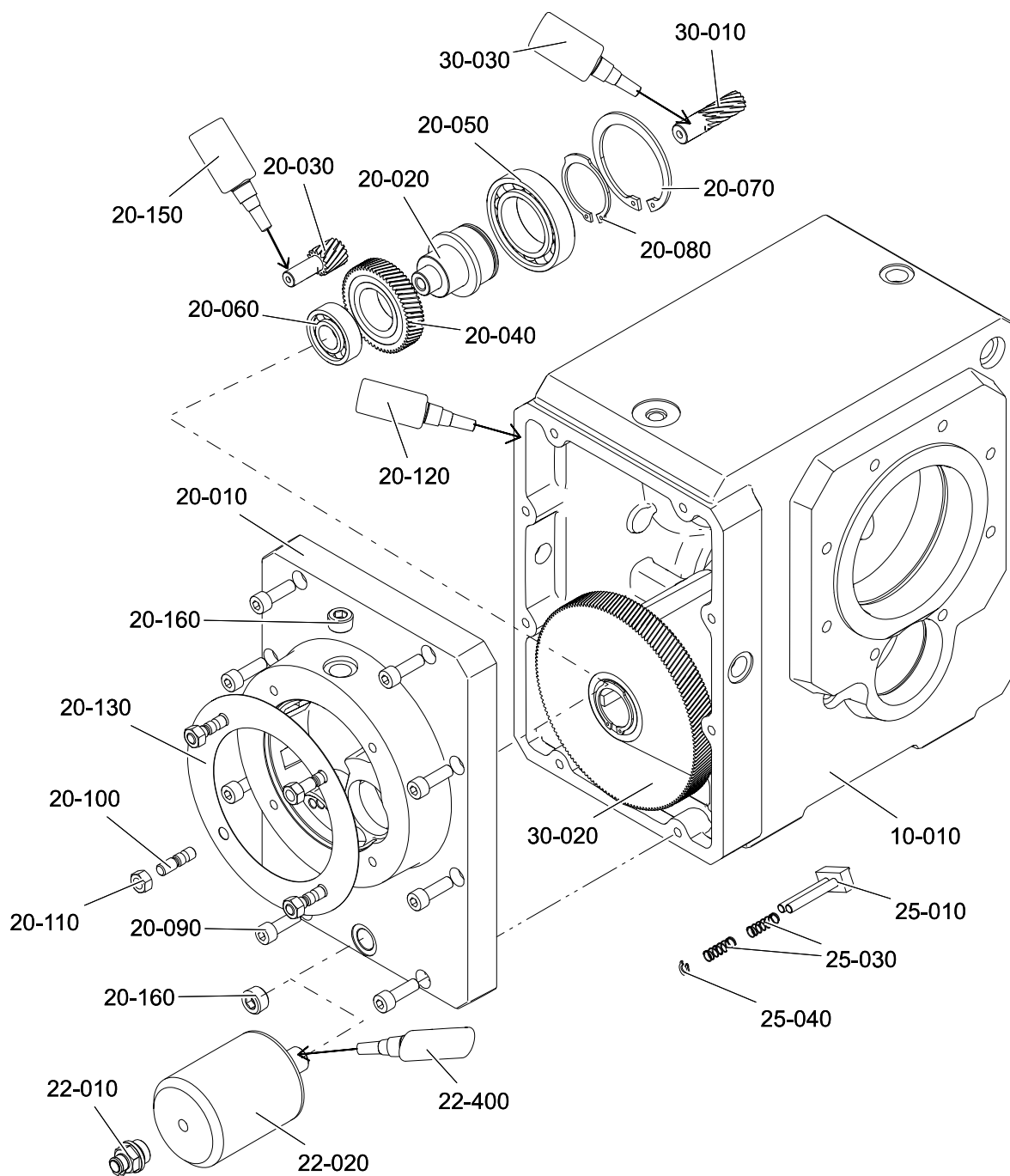
4 Motor connection flange

4.1 Three-stage gear unit



Item No.	Designation	Item No.	Designation
10-010	Gear unit housing	20-010	Motor connecting flange
20-090	Cylinder screw	20-100	Stud screw (except for attachment group ED/EZ/ME) Cylinder screw (for attachment group ED/EZ/ME)
20-110	Hex nut (except for attachment group ED/EZ/ME)	20-120	Surface seal
20-130	Surface seal	20-160	Threaded sealing plug
22-010	Air release valve (optional)	22-020	Expansion tank (optional for installation position EL5)
22-400	Adhesive (optional)	30-010	Pinion
30-020	Gear	30-030	Adhesive

4.2 Four-stage gear unit



Item No.	Designation	Item No.	Designation
10-010	Gear unit housing	20-010	Attachment housing
20-020	Countershaft	20-030	Pinion
20-040	Gear	20-050	Rolling bearing
20-060	Rolling bearing	20-070	Retaining ring
20-080	Retaining ring	20-090	Cylinder screw
20-100	Stud screw (except for attachment group ED/EZ/ME) Cylinder screw (for attachment group ED/EZ/ME)	20-110	Hex nut (except for attachment group ED/EZ/ME)
20-120	Surface seal	20-130	Flat seal
20-150	Adhesive	20-160	Threaded sealing plug
22-010	Air release valve (optional)	22-020	Expansion tank (optional for installation position EL5)
22-400	Adhesive (optional)	25-010	Oil wiper (for installation position EL5)
25-030	Pressure spring (for installation position EL5)	25-040	Grip ring (for installation position EL5)
30-010	Pinion	30-020	Gear
30-030	Adhesive		



STÖBER

WE KEEP THINGS MOVING



Technische Änderungen vorbehalten.
Errors and changes excepted.

ID 443073_en.00
03/2018

STÖBER ANTRIEBSTECHNIK GmbH & Co. KG
Kieselbronner Str. 12
75177 Pforzheim
Germany
Tel. +49 7231 582-0
mail@stoerber.de
www.stoerber.com

24 h Service Hotline +49 7231 582-3000