

ME Motor Adapter

NEW

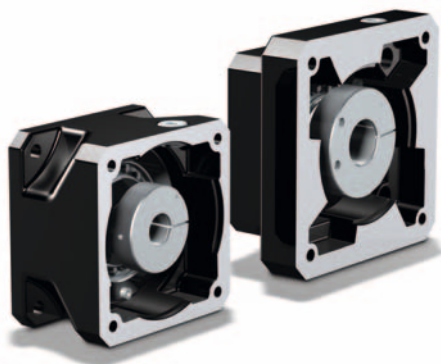


Servo gear units with universal
and flexible motor adaption

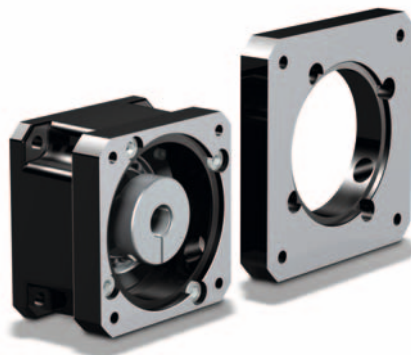


STÖBER

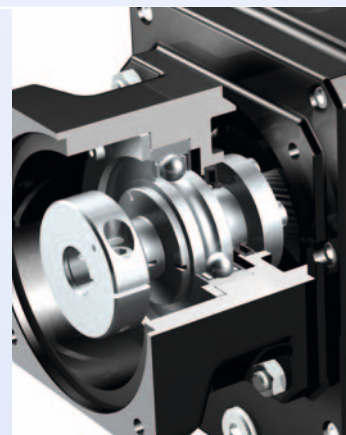
Suitable for all industry standard servo motors



Example motor adapter ME 30:
Left-hand version for 145 mm square motor rating plate,
Right-hand version for next standard size 190 mm



Example motor adapter ME 30, two-piece:
The version with separate adapter plate on the motor side
allows servo motors of almost any dimensions to be fitted
with ease



All ME motor adapters are fitted with an
EasyAdapt® coupling for quick attachment.
For easy detachment of the coupling, the
threaded clamp has an expanding function
(expansion bolt).
Optional "Longlife" oil seal for extreme re-
quirements

ME motor adapters for the servo gear units in the C, F, K, S, PK, PHK, PHQK series

With this new motor adapter series
STÖBER offers a universal attach-
ment system for almost all servo
motors.

The short, compact design is robust
and gives high stiffness.

The motor adapters are supplied
with a monobloc housing version
for the bolt circles of standard
servo motors.

Also available are two-piece ver-
sions with an additional adapter
plate (standard on the ME 50).

The version with the adapter plate
allows easy adaptation of the servo
gear units e.g. to servo motors
with forward motor shaft shoulder.

With EasyAdapt® clamp coupling

For rapid and precise gear unit
motor adaptation, all ME adapters
are fitted with the EasyAdapt®
clamp coupling for plain shafts.

This coupling is balanced and fitted
with an aluminium clamping ring
matching the diameter of the
motor shaft and gives maximum
running smoothness and minimum
inertia.

EasyAdapt® is suitable for the high-
est torque levels and allows the
motor to be attached in a few min-
utes – just EASY.

The ME motor adapters are available in sizes
ME10, ME 20, ME 30, ME 40 und ME 50



STÖBER

**STÖBER ANTRIEBSTECHNIK
GmbH + Co. KG**

75177 PFORZHEIM
GERMANY

Phone +49 (0)7231 582-0
mail@stoeber.de
www.stoeber.de