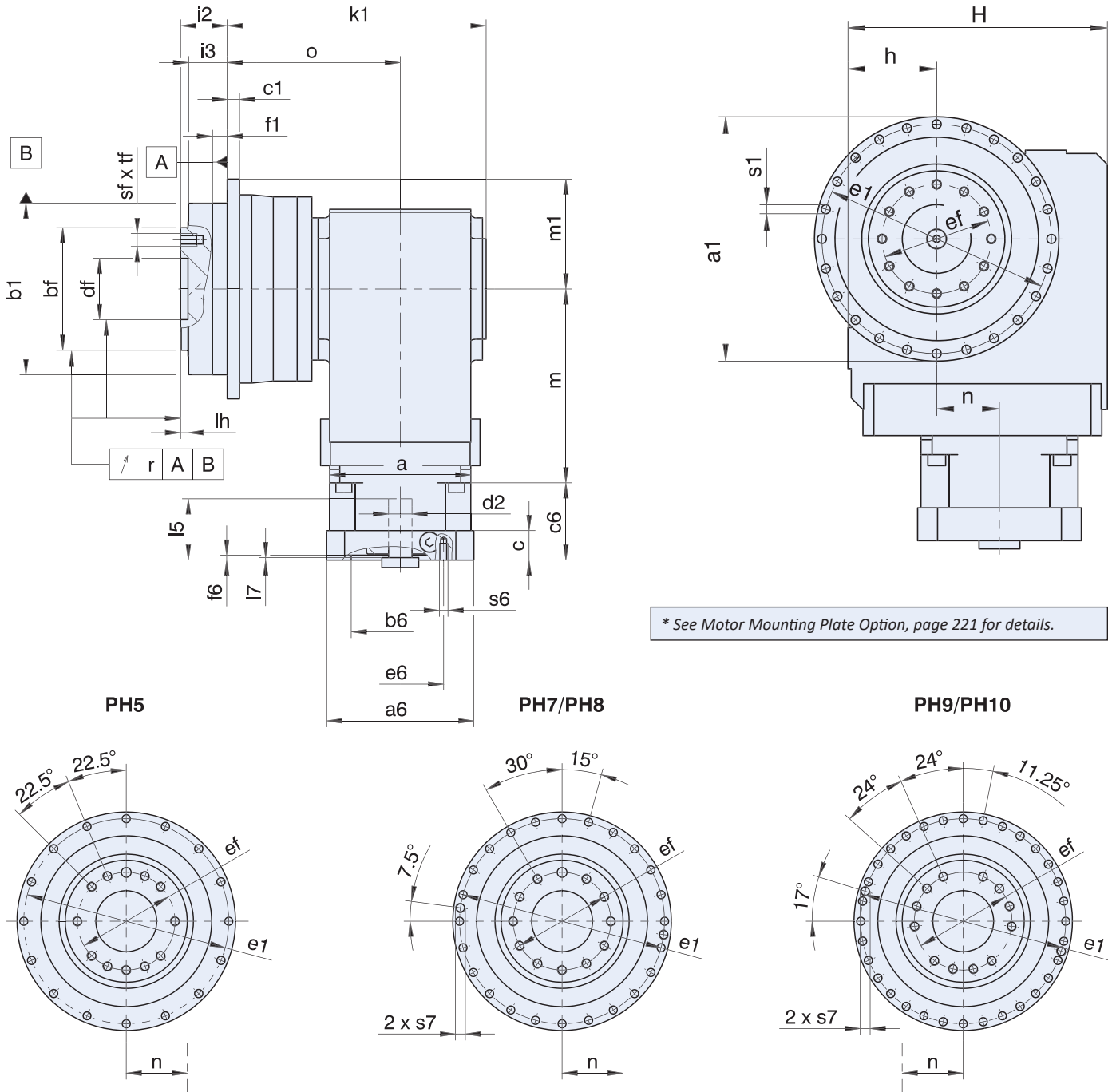
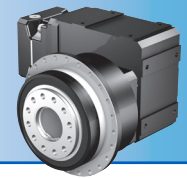


PHK Series: RIGHT ANGLE – Flange Output

PHK Series Dimensions – All Units





Dimensional Data

Table 1 Dimensions (mm)

Unit	Øa1	Øb1	Øbf	c1	Ødf	Øe1	Øef	f1	h	H	i2	i3	k1	lh	m1	o	r	Øs1	s7	sf	tf
PH531_K102	145 ^{h7}	110 ^{h7}	80 ^{h7}	8	40 ^{H6}	135	63	12	60	160	29	23	180.0	6	72.5	124.0	0.020	5.5	-	M6	11
PH731_K102	179 ^{h7}	140 ^{h7}	100 ^{h7}	10	50 ^{H6}	168	80	12	60	160	38	32	183.0	6	89.5	127.0	0.025	6.6	-	M8	14
PH731_K202	179 ^{h7}	140 ^{h7}	100 ^{h7}	10	50 ^{H6}	168	80	12	65	190	38	32	211.0	6	89.5	141.0	0.025	6.6	-	M8	14
PH831_K202	247 ^{h7}	200 ^{h7}	160 ^{h7}	12	80 ^{H6}	233	125	15	65	190	50	42	246.0	8	123.5	176.0	0.030	9.0	M10	M10	18
PH831_K302	247 ^{h7}	200 ^{h7}	160 ^{h7}	12	80 ^{H6}	233	125	15	75	213	50	42	259.5	8	123.5	183.5	0.030	9.0	M10	M10	18
PH941_K513	-	255 ^{h7}	180 ^{h7}	18	90 ^{H6}	280	140	20	160	260	66	55	292.5	12	150.0	196.5	0.030	13.5	M8	M16	24
PH1041_K613	-	285 ^{h7}	200 ^{h7}	20	95 ^{H6}	310	160	20	190	310	75	60	318.5	10	165.0	215.0	0.040	13.5	M10	M20	28

Motor Mounting Plate

Table 2 Dimensions (mm)

Base Module	Motor Adapter Code															Wt. lbs.					
	ME10			ME20			ME30			ME40			ME50								
	a	m	n	a	m	n	a	m	n	a	m	n	a	m	n						
PH531_K102	98	124	36	115	128	36	-	-	-	-	-	-	-	-	-	-	-	-	-	-	43
PH731_K102	98	124	36	115	128	36	-	-	-	-	-	-	-	-	-	-	-	-	-	-	53
PH731_K202	98	143	46	115	147	46	145	149	46	-	-	-	-	-	-	-	-	-	-	-	69
PH831_K202	98	143	46	115	147	46	145	149	46	-	-	-	-	-	-	-	-	-	-	-	116
PH831_K302	140	163	53	115	167	53	145	169	53	-	-	-	-	-	-	-	-	-	-	-	134
PH941_K513	-	-	-	160	172	15	145	174	15	190	177	15	-	-	-	-	-	-	-	-	213
PH1041_K613	-	-	-	160	191	18	200	193	18	190	196	18	300	210	18	-	-	-	-	-	310

PHK Series: RIGHT ANGLE – Flange Output