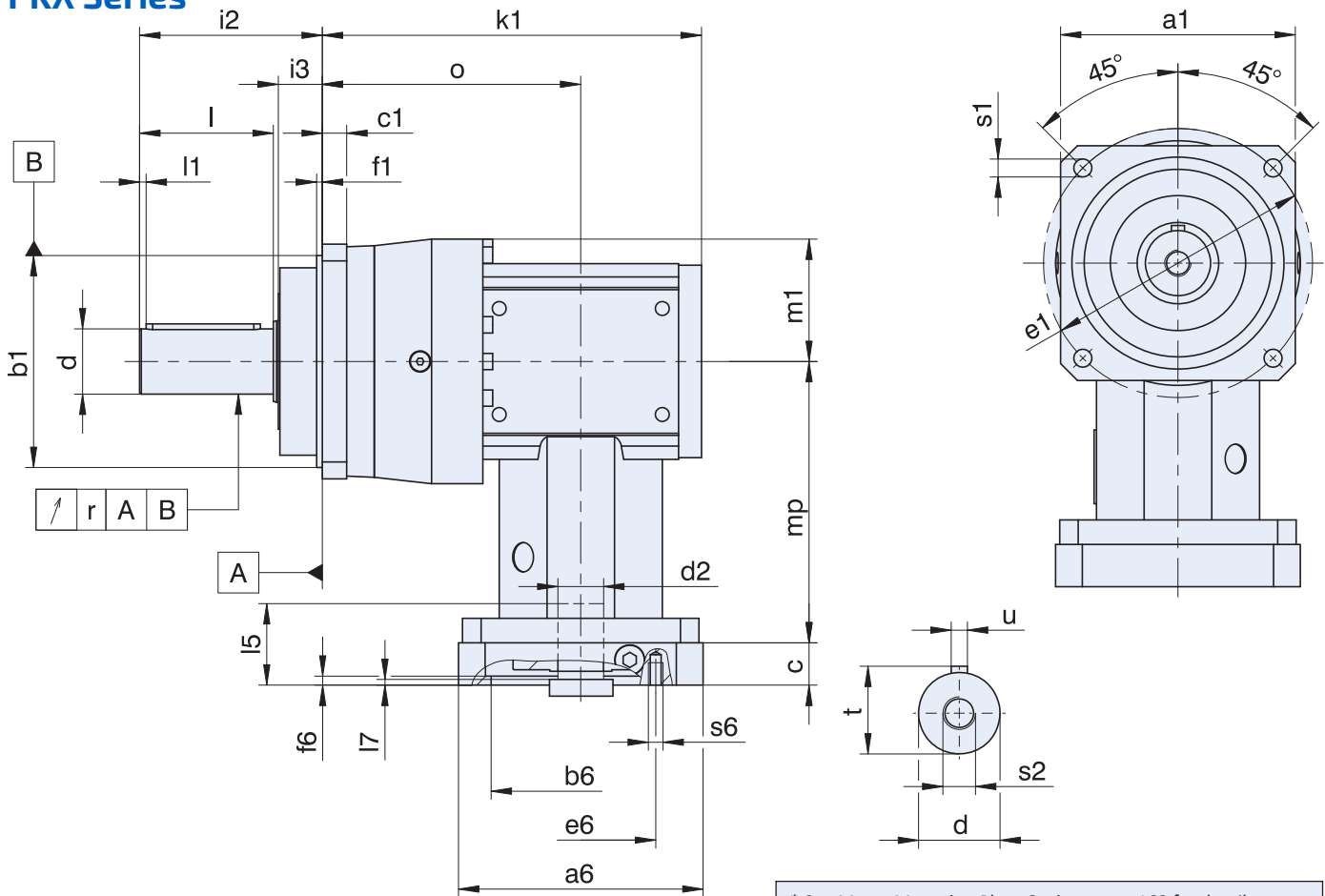


# PKX Series: RIGHT ANGLE – Shaft Output

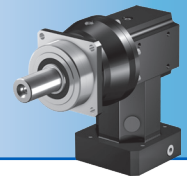
## PKX Series



\* See Motor Mounting Plate Option, page 168 for details.  
 \*\* See Output Shaft Options, page 189 for details.

**Table 1 Dimensions (mm)**

Unit	Øa1	Øb1	c1	Ød	Øe1	f1	i2	i3	k1	l	l1	m1	o	r	Øs1	s2	t	u
P231_KX301	55	50 <sup>h6</sup>	6	12 <sup>k6</sup>	63	7.0	36	12	124.0	22	2	31	84.0	–	5.5	M4	13.5	A4×4×18
P232_KX301	55	50 <sup>h6</sup>	6	12 <sup>k6</sup>	63	7.0	36	12	156.0	22	2	31	116.0	–	5.5	M4	13.5	A4×4×18
P331_KX301	72	60 <sup>h6</sup>	7	16 <sup>k6</sup>	75	7.5	48	18	131.0	28	2	36	91.0	0.025	5.5	M5	18.0	A5×5×22
P332_KX301	72	60 <sup>h6</sup>	7	16 <sup>k6</sup>	75	7.5	48	18	165.5	28	2	38	125.5	0.025	5.5	M5	18.0	A5×5×22
P431_KX401	76	70 <sup>h6</sup>	9	22 <sup>k6</sup>	85	7.5	56	18	165.0	36	3	49	115.0	0.025	6.6	M8	24.5	A6×6×28
P432_KX301	76	70 <sup>h6</sup>	9	22 <sup>k6</sup>	85	7.5	56	18	180.0	36	3	50	140.0	0.025	6.6	M8	24.5	A6×6×28
P531_KX501	101	90 <sup>h6</sup>	10	32 <sup>k6</sup>	120	15.0	88	28	187.5	58	3	58	128.5	0.030	9.0	M12	35.0	A10×8×50
P532_KX401	101	90 <sup>h6</sup>	10	32 <sup>k6</sup>	120	15.0	88	28	207.0	58	3	60	157.0	0.030	9.0	M12	35.0	A10×8×50
P731_KX701	144	130 <sup>h6</sup>	15	40 <sup>k6</sup>	165	3.5	112	27	232.5	82	4	75	158.5	0.035	11.0	M16	43.0	A12×8×70
P732_KX501	144	130 <sup>h6</sup>	15	40 <sup>k6</sup>	165	3.5	112	27	255.5	82	4	75	196.5	0.035	11.0	M16	43.0	A12×8×70
P831_KX701	190	160 <sup>h6</sup>	15	55 <sup>k6</sup>	215	10.0	112	27	267.0	82	6	102	193.0	0.035	13.5	M20	59.0	A16×10×70
P832_KX701	190	160 <sup>h6</sup>	15	55 <sup>k6</sup>	215	10.0	112	27	324.5	82	6	102	250.5	0.035	13.5	M20	59.0	A16×10×70
P932_KX701	212	180 <sup>h6</sup>	17	75 <sup>k6</sup>	250	10.0	143	34	388.0	105	7	115	314.0	0.040	17.5	M20	79.5	A20×12×90



# Dimensional Data

## Motor Mounting Plate

Example dimensions for the motor connection

Type	Øb6	Øe6	Ød2max	l5	□a6	c	f6	l7	s6
P_KX301_MF	60 <sup>H7</sup>	75	19	40	75	18	3.5	5.5	M5
P_KX401_MF	95 <sup>H7</sup>	115	24	42	100	21	4.0	4.5	M8
P_KX501_MF	110 <sup>H7</sup>	130	32	53	120	24	4.0	5.0	M8
P_KX701_MF	130 <sup>H7</sup>	165	38	64	150	26	5.5	8.0	M10

In the table above, you will find example dimensions for the motor connection for the MF motor adapter. **Note that when dimension c is lengthened (depending on the motor used), dimensions c6, l5 and l7 are also lengthened accordingly.**

PKX Series: RIGHT ANGLE – Shaft Output