



STÖBER

DRIVE TECHNOLOGY FOR AUTOMATION, INDUSTRIAL PLANTS AND ENGINEERING



ALL FROM ONE

Servo drives with high dynamics and high output



ServoFit® Planetary Gear Units

ServoFit® P Planetary Gear Units

7 sizes (P2 – P9)
Acceleration torque:
18 – 3,000 Nm
Gear ratio range: 3 – 100
Backlash: $\leq 3 - 8$ arcmin
Universal unit for power and precision

ServoFit® PA Planetary Gear Units

5 sizes (PA3 – PA8)
Acceleration torque:
50 – 1,600 Nm
Gear ratio range: 3 – 100
Backlash: $\leq 1 - 3$ arcmin
Precision for positioning and synchronism

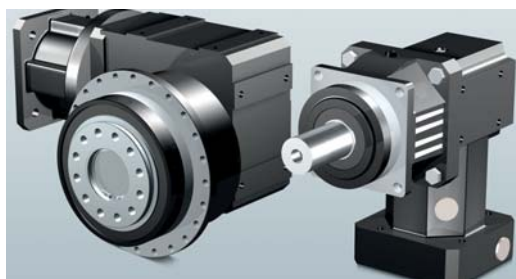


ServoFit® PH (PHQ) Planetary Gear Units

7 (4) sizes
Acceleration torque:
50 – 7,500 Nm (950 – 10,000 Nm)
Gear ratio range:
4 – 120 (20 – 600)
Backlash: ≤ 3 arcmin (≤ 3 arcmin)
PH3 ≤ 4 arcmin
Designed for high-performance servo drives

ServoFit® PHA (PHQA) Planetary Gear Units

7 (4) sizes
Acceleration torque:
50 – 7,500 Nm (950 – 10,000 Nm)
Gear ratio range: 4 – 120 (20 – 600)
Backlash: ≤ 1 arcmin (≤ 1 arcmin)
PHA3 ≤ 2 arcmin (PHQA10 ≤ 1.5 arcmin)
The one for top class servo drives



Gear Unit Combinations

PHK Right Angle Planetary Gear Units

5 sizes (PH5K1 – PH10K6)
Acceleration torque:
160 – 7,500 Nm
Gear ratio range: 20 – 600
Backlash: $\leq 3 - 4$ arcmin
Compact Planetary Gear Unit with plenty of potential

PKX Right Angle Planetary Gear Units

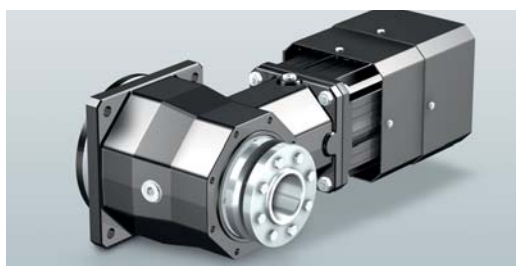
7 sizes (P2KX3 – P9KX8)
Acceleration torque:
18 – 3,000 Nm
Gear ratio range: 3 – 300
Backlash: $\leq 4 - 8.5$ arcmin
Ideal where space is tight



SMS Gear Units

SMS K Helical Bevel Gear Units

10 sizes (K1 – K10)
Acceleration torque: 42 – 13,200 Nm
Gear ratio range: 4 – 400
Backlash: Reduced class I $\leq 1.5 - 3$ arcmin
Efficient alternative for simple servo axes



SMS Servo Geared Motors

◀ SMS KS Right-Angle Servo Geared Motors

3 sizes (KS4 – KS7)
Acceleration torque: 22 – 400 Nm
Gear ratio range: 6 – 100
Backlash: $\leq 4 - 6$ arcmin
New drive type to meet stringent demands



ED Servo Motors

Slim design
Optimized for high-dynamic applications
High maximum torque
High overload capability
6 sizes: ED 202 – ED 808
Static torque: 0.43 – 84 Nm

EK Servo Motors

Compact short design
Excellent true running at low speeds
Strong turning moment
High overload capability
3 sizes: EK 501 – EK 803
Static torque: 3.36 – 33.5 Nm

SMS Planetary Geared Motors



SMS – the universal modular servo system

The SMS product range contains ServoFit® Planetary Gear Units and the combination gear units based on these.

The gear units can be attached to all common servo motor manufacturers via flange.

For direct gear unit attachment without flange ED and EK servo motors are ideal. The integrated design optimizes size, weight and rigidity of an SMS geared motor.

When combined with the POSIDRIVE® MDS 5000 and POSIDYN® SDS 5000 servo inverters full digital control of ED and EK servo motors is provided.

Consistent modularization of the modular servo system in combination with the flexibility offered by the POSITool programming and parameterization software makes for fast and consistently efficient configuration of a servo axis.

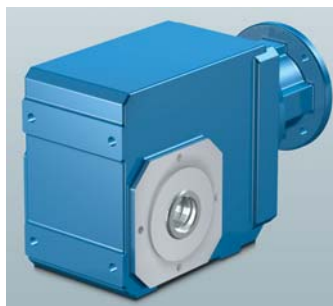


SMS SERVO GEARED MOTORS

Highly rigid precision geared motors



◀ MGS C Helical Gear Unit
10 sizes: C0 – C9
Rated torque: 21 – 7,000 Nm
Gear ratio range: 2 – 300
Backlash: $\leq 10 - 20$ arcmin
Particularly versatile with a variety of housing options



MGS S Helical Worm Gear Unit
5 sizes: S0 – S4
Rated torque: 37 – 800 Nm
Gear ratio range: 6 – 700
Particularly cost-efficient right-angle drive up to 800 Nm



MGS F Shaft-Mounted Helical Gear Unit
5 sizes: F1 – F6
Rated torque: 45 – 1,100 Nm
Gear ratio range: 4 – 600
Backlash standard: $\leq 10 - 11$ arcmin
Reduced class II: $\leq 5 - 8$ arcmin
Extremely flat gear housing and great shaft-centre distance

MGS K Helical Bevel Gear Unit
10 sizes: K1 – K10
Rated torque: 42 – 12,000 Nm
Gear ratio range: 4 – 400
Backlash standard: $\leq 10 - 12$ arcmin
Reduced class I: $\leq 1.5 - 3$ arcmin
Reduced class II: $\leq 4 - 6$ arcmin
The torsionally rigid block design allows for tightest functional tolerances



MGS K Helical Bevel Gear Unit – Foodtech
Special design version for food and beverage industries

MGS F Shaft-Mounted Helical Geared Motor

MGS K Helical Bevel Geared Motor

MGS S Helical Worm Geared Motor

MGS C Helical Geared Motor

Incremental encoder for STÖBER system motors

MGS – the modular geared motor system

The MGS modular geared motor system is based on four gear unit series with high precision of running and a host of design features and options.

The torsionally rigid block design of the housings and the high standard of quality of gear set manufacturing ensure a very high level of precision and excellent running smoothness. Consequently, there is little heat generation, which allows for lifetime lubrication and therefore maintenance-free operation.

The logic graduation of power and speed through all the gear series simplifies configuration and rationalizes spare parts stocking.

The system motors of the MGS modular gear unit system can be adapted to a great variety of application profiles thanks to their many and varied features and design options.



MGS Systemmotor
AC asynchronous motor
Motor power: 0.12 – 45 kW
Optional: Brake, forced cooling fan, incremental encoder or multturn absolute encoder
Additional design versions for special area applications:
Ex, underwater, hygiene, food



MGS MODULAR GEARED MOTORS

SOFTWARE AND POWER ELECTRONICS



STÖBER

For control of SMS servo drives and MGS geared motors the system manufacturer STÖBER ANTRIEBSTECHNIK offers the inverter systems fine-tuned to these.

As all actuators come from one supplier smooth interaction of all components is guaranteed.

This comprehensive drive expertise is also ideal for applications where larger systems are commissioned as well as for all aspects of support and service.



POSIDRIVE® FDS 5000
POSITool programming and parameterization software

For motor power ratings from 0.37 to 7.5 kW
EMC protection
Field bus options:
CAN bus
PROFIBUS DP
EtherCAT

Optimized for MGS geared motors

POSIDRIVE® MDS 5000
POSITool programming and parameterization software

Operation with MGS system motor:
Motor power ratings
0.75 – 45 kW
or rated current
3 x 4.0 – 3 x 85 A
Operation with servo motor:
Rated current
3 x 3.0 – 3 x 60 A
EMC protection
Field bus options:
CAN bus
PROFIBUS DP
EtherCAT

Universal, fully digital inverter for SMS and MGS geared motors

POSIDYN® SDS 5000
POSITool programming and parameterization software

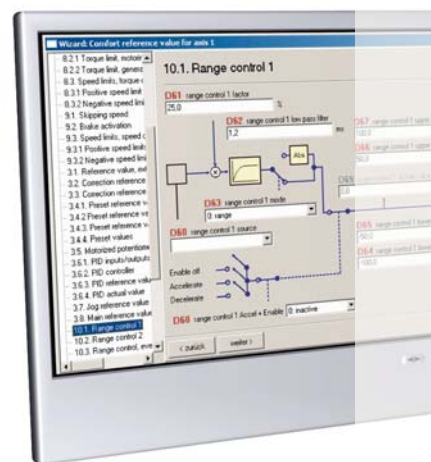
Rated current 1.5 to 60 A
IGB motion bus
Field bus options:
CANopen
PROFIBUS DP
EtherCAT

Fully digital servo inverter with secure remote maintenance

New software generation

A new firmware and the POSI-Tool programming and parameterization software stand for a system technology with a completely new structure and an ergonomic three-layer architecture.

The extensive library with basic applications permits systems to be configured fast, cost-efficiently and surely.



STÖBER WORLDWIDE

Advice and service

We will be pleased to advise and help you configure your system.

In particular where requirements are more complex or systems extensive we recommend contacting us early and without obligation.

In addition to support and service provided by in-house-trained technical advisers we also offer complete commissioning of systems as well as training of your staff.

STÖBER ANTRIEBSTECHNIK GmbH + Co. KG

Kieselbronner Str. 12
75177 PFORZHEIM
GERMANY
Phone +49 (0)7231 582-0
Fax +49 (0)7231 582-1000
Email: mail@stoeber.de

STOBER DRIVES LTD.
ESSEX EN9 1JH
GREAT BRITAIN
Email: mail@stober.co.uk
www.stober.co.uk

STOBER DRIVES, INC.
MAYSVILLE, KY 41056
USA
Email: sales@stober.com
www.stober.com

STÖBER ANTRIEBS-TECHNIK GmbH
4662 STEYRERMÜHL
AUSTRIA
Email: office@stoeber.at
www.stoeber.at

STOBER CHINA
BEIJING 100004
CHINA
Email: info@stoeber.cn
www.stoeber.cn

STÖBER S.r.l.
69300 CALUIRE ET CUIRE
FRANCE
Email: mail@stober.fr
www.stober.fr

STÖBER TRASMISSIONI s.r.l.
20017 MAZZO DI RHO (MI)
ITALY
Email: info@stoeber.it
www.stoeber.it

STÖBER Schweiz AG
5453 REMETSCHWIL
SWITZERLAND
Email: info@stoeber.ch
www.stoeber.ch