



**STÖBER**

# NEW ME ADAPTER UPDATES & BENEFITS

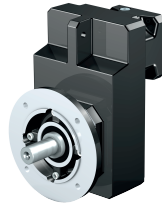
The ME inputs will effect the C, F, K, PK, PHK, and PHQK. The ME coupling housing's square design will save space and allow for closer mounting to the machine. The ME adapter can accept larger motor shaft diameters without upsizing.



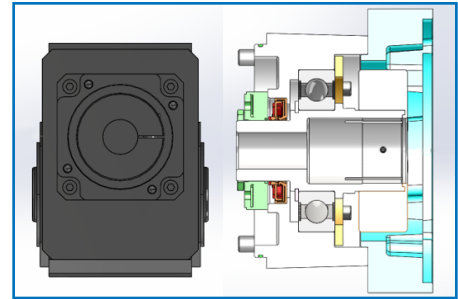
**K -Right Angle**



**C -Inline**

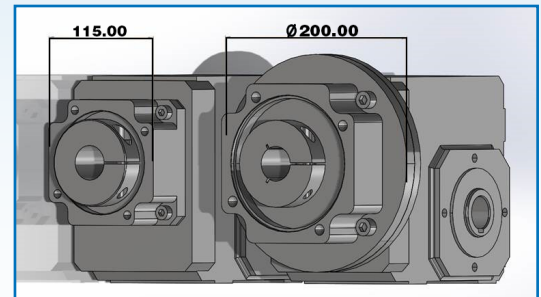


**F -Offset**



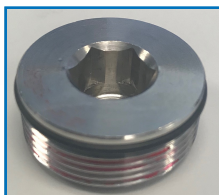
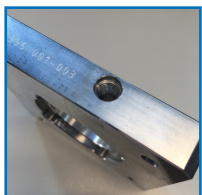
## TOP ADVANTAGES

- Higher torques- Up to 116% increase in nominal torques
- Higher input speeds- Up to a 1,000 rpm increase in cyclic
- More compact with square coupling housing
- Lower input inertia due to more coupling options



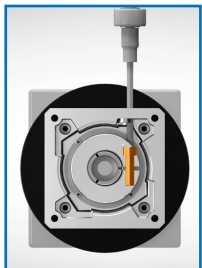
Left: K2 ME20 with a 32mm input coupling

Right: K2 with a MT30



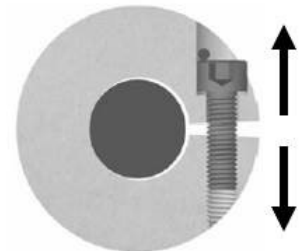
## New Screw Plug for Better Protection

ME Series will follow Generation 3 Motor Plate standards. Every gearbox will be provided with a screw plug for better ingress protection and more security.



## Easier Assembly/Disassembly

- Roll pin allows the clamp ring to pull away from the shaft coupling when installing
- This makes sliding the motor shaft into the coupling easier
- Removal is also easier



## ADDITIONAL INFORMATION

- The price will be the same as the MT.
- The MV and part number will change.
- After 02/01/2020, all new SMS units should use a ME input.