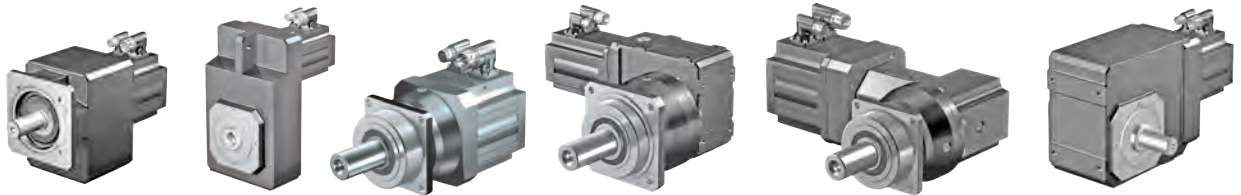




STÖBER



THE WASHDOWN SOLUTION

STÖBER Synchronous Servo Geared Motors are available in food duty or corrosion resistant options for all of your washdown requirements.



DON'T STRESS ABOUT WATER INGRESS!

Whether it is a harsh environment or an installation or fitment issue, water ingress is one of the leading causes of equipment failure in washdown environments. STÖBER's Geared Motors are available with food duty or corrosion resistant package.

PACKAGE	CORROSION RESISTANT	FOOD DUTY
APPLICATION	Moderate washdown	Severe washdowns
COATING	316 Stainless Steel Epoxy	316 Stainless Steel Epoxy Antimicrobial clear coat
OIL	Exxon Mobil 600XP220 Mineral or SHC 630	Exxon Mobil SHC CIBUS 220 Food Grade
HARDWARE	Stainless Steel	Stainless Steel
		

Benefits of STÖBER Geared Motor

- Single Supplier
- 2 year warranty
- Reduction of Wear Components
- Multiple Third-Party Integration options for Single and Dual-Cable Solutions (including Rockwell DSL)

WE'VE GOT IT ALL SQUARED AWAY!

When it comes to installing motors onto gearboxes, sometimes the squares just don't match up. This can cause premature failure. STÖBER's motors utilize the same flanges as out input adapters, meaning that there is a perfect fit to the gearbox, everytime. No chance of a mismatch here!

Options for Ingress Protection up to IP66



WASHDOWN READY OPTIONS

If you need an inline flange mount option, we can provide it with washdown paint and lubrication.





STÖBER

Our Three Pillars

STOBER is your **trusted partner** in providing the ultimate customer experience. From unsurpassed quality to rapid response support to fast delivery, we are the **gold standard** for gearboxes.



STÖBER
CONFIGURATOR

With the new STOBER Configurator, engineers and designers will save time in product selection and designing. Everything is a simple click away!



24/7 Support
Built in less than 1 week



Aftermarket Repair and Replacement done in USA



Committed to **optimizing your production** and machine design



MORE COMPACT



ADAPTABILITY



PACKAGED UNIT



MORE DYNAMIC



RUNS COOLER