

Make sure you have the following:



Installation CD



Gigabit USB 2.0 Network Adapter

System Requirements

PC-compatible desktop or notebook computer with one available USB slot running Windows® 98SE, Me, 2000, XP, or 2003

Quick Setup →

1. Connect



Connecting the Hardware



1.1 Plug the Adapter directly into an available USB port on your computer or by using a Belkin USB extension cable.



1.2 Connect one end of your CAT5 cable into the rear of the Adapter.

1.3 Connect the other end of the CAT5 cable into an available Gigabit Ethernet or Fast Ethernet port on your router, switch, or any other networking device.

Understanding LED Behavior

There are three LEDs on the Belkin Gigabit USB 2.0 Network Adapter and their behavior is described as follows:



This LED lights up as soon as the Adapter is plugged into an empty USB slot and starts receiving power through the USB port.

100M/1000M

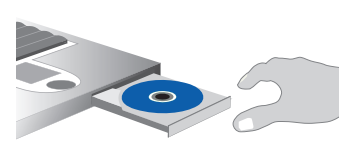
This LED remains lit solid when connected to a Gigabit Ethernet 1000Mbps router, switch, or any other networking device. This LED blinks when connected to a Fast Ethernet 100Mbps router, switch, or any other networking device.



This LED is lit as soon as the link is established between the Adapter and any other 10Mbps, 100Mbps, or 1000Mbps networking device using a CAT5 cable. This LED blinks representing data flow when there is Tx or Rx activity across the link.



2. Install



Installing the Gigabit USB 2.0 Network Adapter

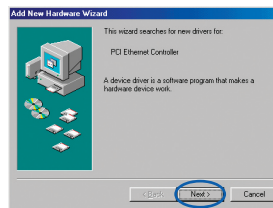
Windows 98SE:

2.1 You may need your Windows 98SE CD-ROM to complete the installation of the Adapter. If prompted, please locate the CD and place it into your computer's CD-ROM drive. **Note:** Belkin **cannot** provide the Windows files you need to complete the installation.

2.2 Connect the Adapter as described in the section “Connecting the Hardware”.

2.3 Windows will automatically detect that a new device has been connected. The screen on the left will appear. Insert the Adapter's CD into your CD-ROM drive. Click “Next”.

(click) **Next**



2.4 When prompted, “What do you want Windows to do?,” select “Search for the best driver for your device. (Recommended)” and click “Next”.

(click) **Next**



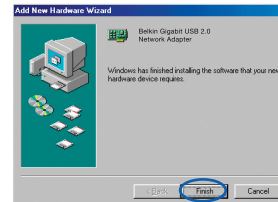
2.5 In the following window, place a check mark next to “CD-ROM drive”. Click “Next”.

(click) **Next**



2.6 Windows will find the appropriate drivers and the following screen will appear. Click “Next”.

(click) **Next**



2.7 Windows may ask you to insert your Windows 98SE CD-ROM. If so, insert your Windows 98SE CD-ROM and click “OK”. If asked to specify where the CD-ROM is, type “D:\Win98”, where “D:\” is the drive letter of your CD-ROM drive. Click “OK”.

(click) **OK**

2.8 When the following screen appears, click “Finish”.

(click) **Finish**

2.9 Windows may ask you to restart the computer. Click “Yes” to restart your computer. When your computer restarts, the Adapter will be ready to use.

NOTE:
This Host Interface USB 2.0 product is compatible with the USB 1.1 and USB 2.0 specifications. To achieve maximum networking speeds, this device must be connected to a USB 2.0 host port on a PC-compatible desktop or notebook computer. Connection of this device to a USB 1.1 host port will yield a lower speed.

NOTE:
A standard Belkin network cable cannot be used to directly connect two computers. A specially wired cable called a crossover cable is needed to allow you to connect two computers without the use of a network hub or switch. Belkin crossover cables are yellow (Belkin part number A3X126-XX-YLW-M).

NOTE:
If you use Windows 98SE, Me, 2000, XP, or 2003, please go to the color-coded section that corresponds to your operating system.

Windows Me:



2.1 Install the Adapter in your computer as described in the section “Connecting the Hardware”.

2.2 Windows will automatically detect that a new device has been connected. The screen on the left will appear. Insert the Adapter's CD into the CD-ROM drive. Click “Next”.



2.3 When asked, “What would you like to do?,” select “Automatically search for a better driver (Recommended)”. Windows will automatically find the drivers and install them. Click “Finish”.



2.4 Windows may ask you to restart the computer. Click “Yes” to restart your computer.

2.5 When your computer restarts, the Adapter will be ready to use.

Windows 2000:



2.1 Connect the Adapter in your computer as described in the section “Connecting the Hardware”.

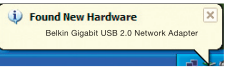
2.2 Windows will automatically detect that a new device has been connected. The screen on the left will appear.

2.3 Insert the Adapter's CD into the CD-ROM drive. Click “Next”. Windows will automatically install the drivers.



2.4 When the window on the left disappears, the Adapter is installed and ready to use.

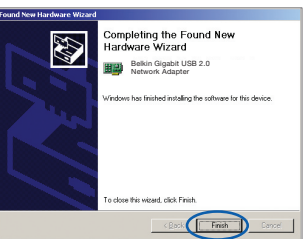
Windows XP:



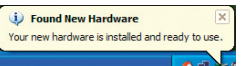
2.1 Connect the Adapter in your computer as described in the section “Connecting the Hardware”.

2.2 Windows will automatically detect that a new device has been connected and will display the following window in the bottom-right corner of the screen.

2.3 Insert the Adapter's CD into the CD-ROM drive. Click “Next”. Windows will install the drivers for the Adapter.



2.4 Windows will tell you when the Adapter is ready to use.



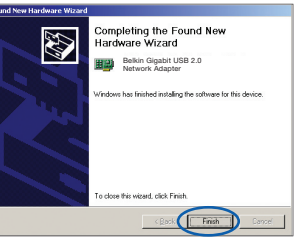
Windows 2003:



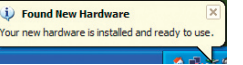
2.1 Connect the Adapter in your computer as described in the section “Connecting the Hardware”.

2.2 Windows will automatically detect that a new device has been connected. The screen on the left will appear.

2.3 Insert the Adapter's CD into the CD-ROM drive. Click “Next”. Windows will automatically install the drivers.



2.4 When the window on the left disappears, the Adapter is installed and ready to use.



BELKIN®

Gigabit USB 2.0
Network Adapter

BELKIN®

Gigabit USB 2.0
Network Adapter

BELKIN®

www.belkin.com

Belkin Tech Support

US: 877-736-5771
310-898-1100 ext. 2263
Europe: 00 800 223 55 460
Australia: 1800 235 546
New Zealand: 0800 235 546
Singapore: 800 616 1790

Belkin Corporation

501 West Walnut Street
Los Angeles, CA 90220, USA
310-898-1100
310-898-1111 fax

Belkin Ltd.

Express Business Park, Shipton Way
Rushden, NN10 6GL, United Kingdom
+44 (0) 1933 35 2000
+44 (0) 1933 31 2000 fax

Belkin Ltd.

7 Bowen Crescent, West Gosford
NSW 2250, Australia
+61 (0) 2 4372 8600
+61 (0) 2 4372 8603 fax

Belkin B.V.

Boeing Avenue 333
1119 PH Schiphol-Rijk
The Netherlands
+31 (0) 20 654 7300
+31 (0) 20 654 7349 fax

Start Here→



Quick Installation
Guide



© 2006 Belkin Corporation. All rights reserved. All trade names are registered trademarks of respective manufacturers listed.