

Dimensional Data

SMS Reducer Optional Output Flange For "F" Round Output Flange Units Only (Note: optional flanges are not available on all sizes)

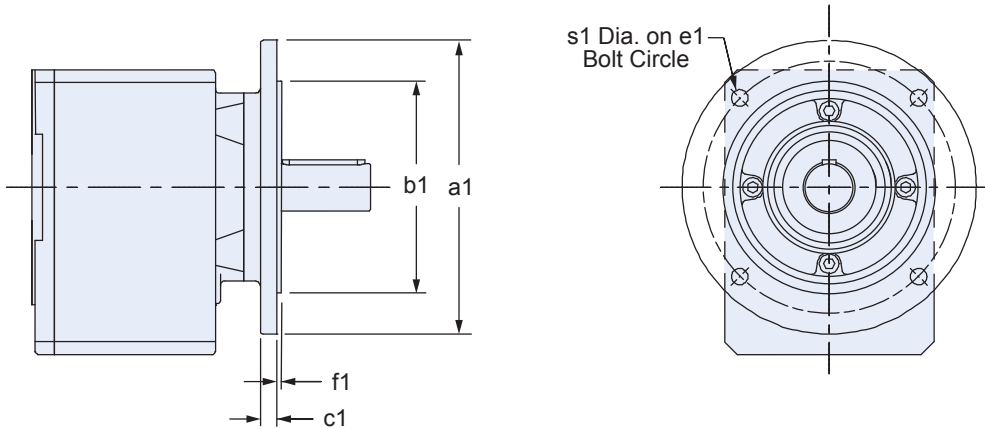


Table 1 Dimensions (mm)

Unit	Accommodate NEMA C-Frame Motors	Flange Size a1	b1 *	c1	e1	f1	s1
C0	050	120	80 _{j6}	10	100	3	7
	140	140	95 _{j6}	10	115	3	9
C1	050	140	95 _{j6}	8	115	3.5	9
	140	160	110 _{j6}	10	130	3.5	9
C2	180	160	110 _{j6}	10	130	3.5	9
		250	180 _{j6}	12	215	4	14
C3	050	160	110 _{j6}	10	130	3.5	9
	140	200	130 _{j6}	12	165	3.5	11
C4	180	200	130 _{j6}	14	165	3.5	11
	210	300	230 _{j6}	14	265	4	14
C5	180	250	180 _{j6}	14	215	4	14
	210						
C8	250	350	250 _{h6}	18	300	5	18
	280	450	350 _{h6}	20	400	5	18

* h6, j6 = existing values

C Series: INLINE — Shaft Output

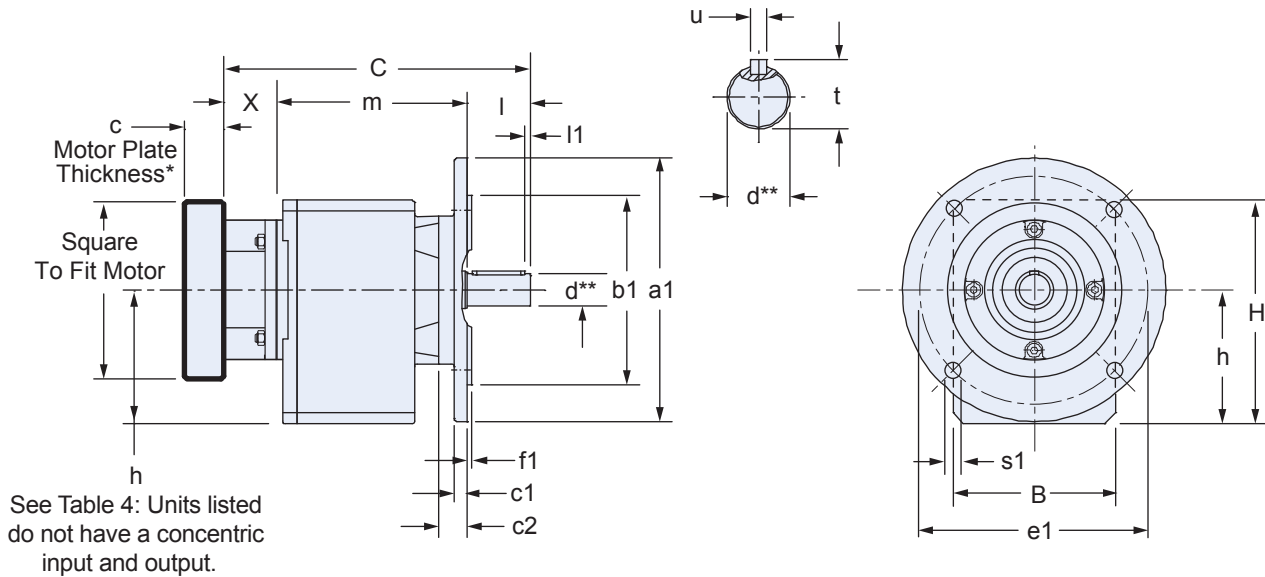
Please contact STÖBER for ordering assistance.

C Series: INLINE — Shaft Output

“F” Round Output Flange —

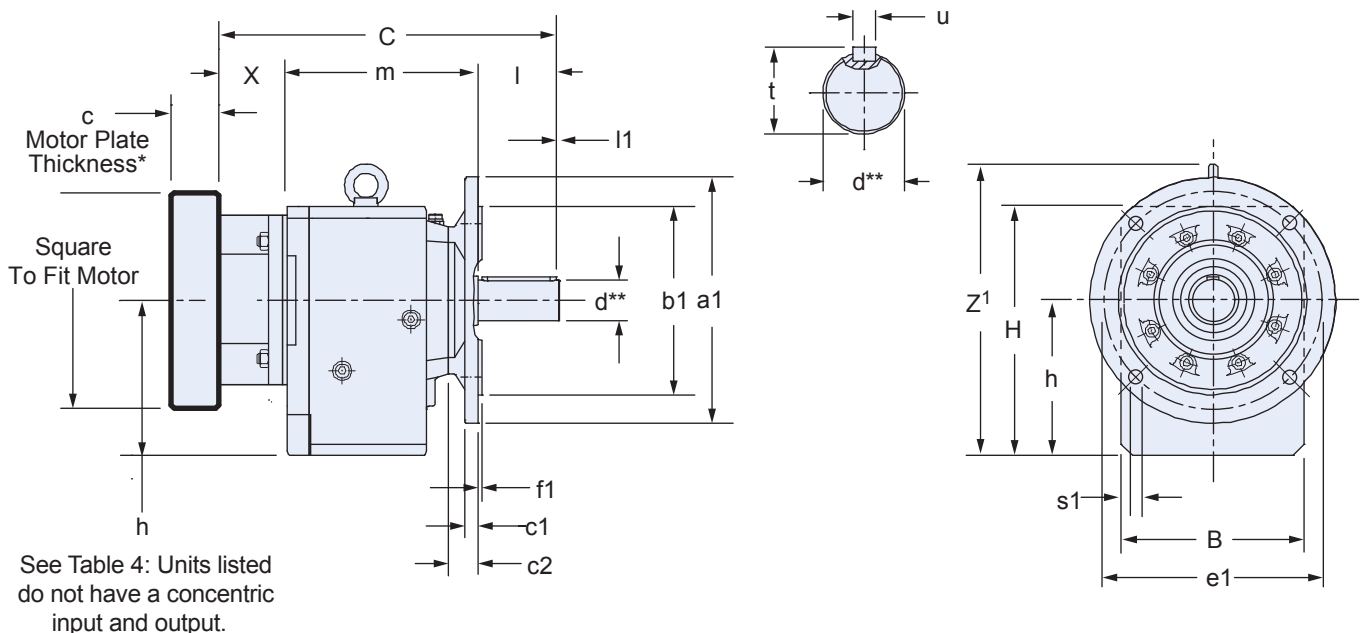
C002F thru C503F

Optional SMS Reducer Output Flange available on most models, see page 93 for details.



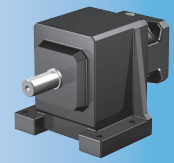
* See Motor Mounting Plate Option, page 76 for details.
** For optional output shaft options, see page 75.

C612F thru C913F



* See Motor Mounting Plate Option, page 76 for details.
** For optional output shaft options, see page 75.

NOTE: Instead of 4 holes as shown in the drawing, the C912 and C913 output flange has 8 “J” dia. mounting holes on “F” bolt circle (located 22.5° from horizontal).



Dimensional Data

Table 1 Dimensions (mm)

Unit	a1	B	b1 *	c1	c2	e1	f1	H	h	l1	s1	Z ¹
C0	160	97	110 _{j6}	10	18	130	3	141	79	3	9	–
C1	200	130	130 _{j6}	12	21	165	3.5	175	100	5	11	–
C2	200	142	130 _{j6}	12	27	165	3.5	192	112 ¹⁾	5	11	–
C3	250	154	180 _{j6}	12	27	215	4	212	127 ¹⁾	5	14	–
C4	250	178	180 _{j6}	14	28	215	4	242.5	142.5	5	14	–
C5	300	195	230 _{j6}	16	29	265	4	286	166	5	14	–
C6	300	225	230 _{j6}	17	36	265	4	310	195 ¹⁾	5	14	362
C7	350	265	250 _{h6}	18	44	300	5	371	231 ¹⁾	5	18	432
C8	400	310	300 _{h6}	20	45	350	5	445	285	5	18	506
C9	450	365	350 _{h6}	23	50	400	5	524	334	5	18	594

¹⁾ Select units do not have a concentric input and output. See input dimension "h" for these units in Table 4.

Table 2 Metric output available on request.

Unit	Standard Shaft - inches			Optional Shaft - mm		
	d _{h6} *	t	u	d *	t	u
C0	0.750	0.83	$\frac{3}{16} \times \frac{3}{16} \times 1-\frac{7}{32}$	20 _{k6}	22.5	A6x6x32
C1	1.000	1.11	1/4 x 1/4 x 1-9/16	25 _{k6}	28	A8x7x40
C2	1.250	1.36	1/4 x 1/4 x 1-15/16	30 _{k6}	33	A8x7x50
C3	1.250	1.36	1/4 x 1/4 x 1-15/16	30 _{k6}	33	A8x7x50
C4	1.625	1.79	3/8 x 3/8 x 2-7/8	40 _{k6}	43	A12x8x70
C5	1.625	1.79	3/8 x 3/8 x 2-7/8	40 _{k6}	43	A12x8x70
C6	2.125	2.35	1/2 x 1/2 x 3-5/32	50 _{k6}	53.5	A14x9x90
C7	2.375	2.65	5/8 x 5/8 x 3-15/16	60 _{m6}	64	A18x11x100
C8	2.875	3.21	3/4 x 3/4 x 4-5/16	70 _{m6}	74.5	A20x12x125
C9	3.625	4.01	7/8 x 7/8 x 5-1/2	90 _{m6}	95	A25x14x140

* h₆, j₆, k₆, m₆ = existing values

Table 3 Motor Adapter Dimensions (mm)

Motor Adapter	Thickness c Min. ³⁾	Motor Shaft d2 Max. ²⁾	X	Wt. lbs.
ME10	21	19	40	5
ME20	24	32	50	8
ME30	25	38	60	15
ME40	33	48	88	28
ME50	43	60	81.5	42

²⁾ If an adapter bushing is required it will be supplied as a component of the motor mounting plate.

³⁾ Motor plate maximum thickness "c" will vary with motor shaft length but will not be less than shown.

For approximate weight, add adapter weight from Table 3 and base module weight from Table 4.

Table 4 Dimensions (mm)

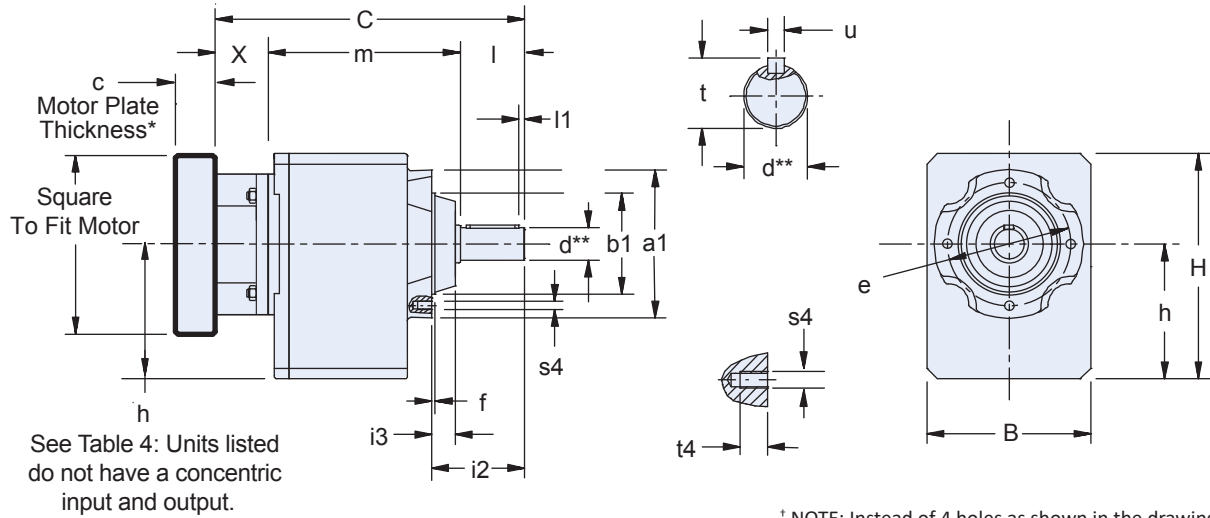
Unit	ME10				ME20				ME30				ME40				ME50				Approx. Wt.(lbs.)	
	C	h	l	m	C	h	l	m	C	h	l	m	C	h	l	m	C	h	l	m		
C002	194	–	40	114	208	–	40	118	–	–	–	–	–	–	–	–	–	–	–	–	–	18
C102	227	–	50	137	241	–	50	141	253	–	50	143	–	–	–	–	–	–	–	–	–	29
C103	264	–	50	174	–	–	–	–	–	–	–	–	–	–	–	–	–	–	–	–	–	34
C202	255	–	60	155	269	–	60	159	281	–	60	161	–	–	–	–	–	–	–	–	–	38
C203 ⁴⁾	292	75.5	60	192	312	75.5	60	202	–	–	–	–	–	–	–	–	–	–	–	–	–	45
C302	–	–	–	–	288	–	60	178	300	–	60	180	331	–	60	183	–	–	–	–	–	49
C303 ⁴⁾	311	90	60	211	331	90	60	221	–	–	–	–	–	–	–	–	–	–	–	–	–	56
C402	–	–	–	–	335.5	–	80	205.5	347.5	–	80	207.5	378.5	–	80	210.5	–	–	–	–	–	71
C403	–	–	–	–	378.5	–	80	248.5	–	–	–	–	–	–	–	–	–	–	–	–	–	78
C502	–	–	–	–	357	–	80	227	369	–	80	229	400	–	80	232	407.5	–	80	246	95	
C503	–	–	–	–	400	–	80	270	–	–	–	–	–	–	–	–	–	–	–	–	–	111
C612 ⁴⁾	–	–	–	–	–	–	–	–	393	189	100	233	424	189	100	236	430.5	189	100	249	115	
C613 ⁴⁾	–	–	–	–	425	–	100	275	455	–	100	295	–	189	–	–	–	–	–	–	–	159
C712	–	–	–	–	–	–	–	–	446	–	120	266	476	–	120	268	482.5	–	120	281	199	
C713 ⁴⁾	–	–	–	–	–	–	–	–	507	–	120	327	547	250	120	339	–	–	–	–	–	221
C812	–	–	–	–	–	–	–	–	–	–	–	–	543	–	140	315	549.5	–	140	328	322	
C813	–	–	–	–	–	–	–	–	574	–	140	374	614	–	140	386	–	–	–	–	–	342
C912	–	–	–	–	–	–	–	–	–	–	–	–	–	–	–	–	616.5	–	170	365	596	
C913	–	–	–	–	–	–	–	–	–	–	–	–	681	–	170	423	–	–	–	–	–	678

⁴⁾ Select units do not have a concentric input and output dimension "h". Table 4 "h" values are for input side only on these select units. All concentric input and output units dimension "h" values are listed in Table 1 above.

C Series: INLINE — Shaft Output

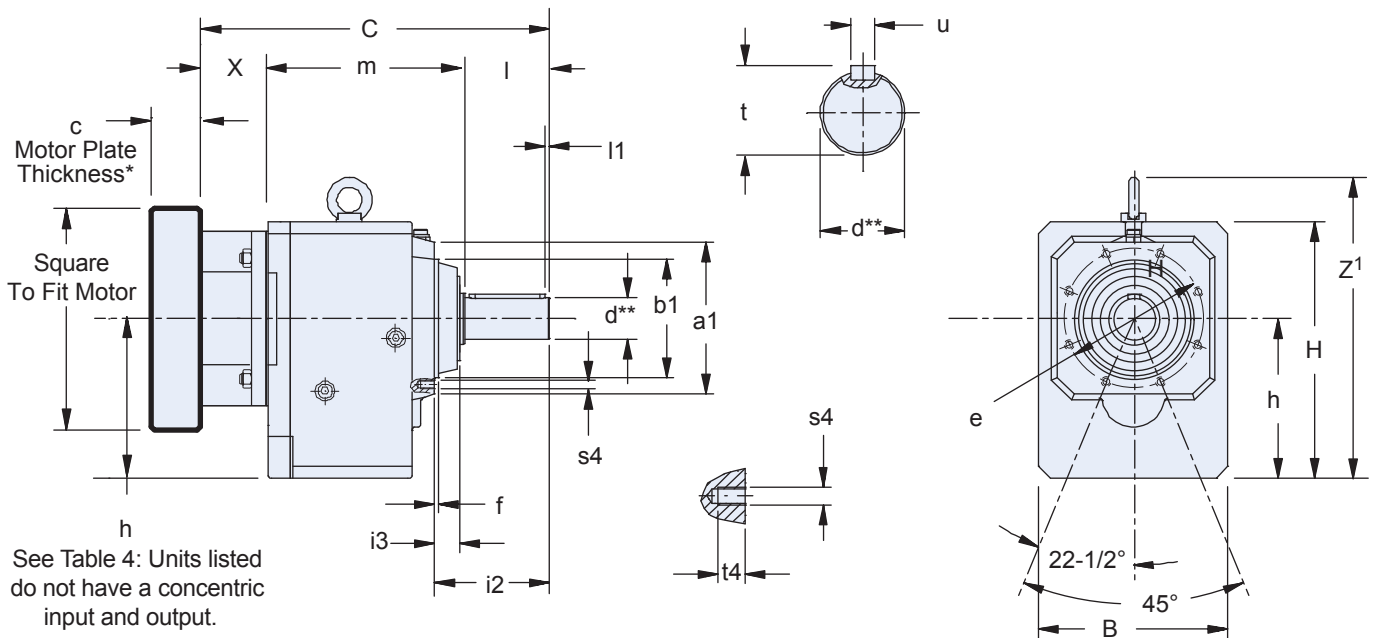
“G” Pitch Circle Diameter (PCD) Tapped Holes —

C002G thru C503G

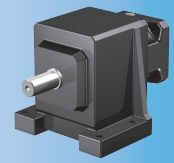


* See Motor Mounting Plate Option, page 76 for details.
** For optional output shaft options, see page 75.

C612G thru C913G



* See Motor Mounting Plate Option, page 76 for details.
** For optional output shaft options, see page 75.



Dimensional Data

Table 1 Dimensions (mm)

Unit	a1	B	b1 _{j6}	e	f	H	h	i2	i3	l1	s4	t4	z ¹
C0	87	97	55	75	3	141	79	58	14	3	M6x1	10	–
C1	120	130	80	100	3	175	100	71	17	5	M6x1	13	–
C2	140	142	95	115	3	192	112 ¹⁾	87	22	5	M8x1.25	13	–
C3	140	154	95	115	3	212	127 ¹⁾	87	22	5	M8x1.25	13	–
C4	160	178	110	130	3.5	242.5	142.5	108	22	5	M10x1.25	16	–
C5	192	195	130	165	3.5	286	166	109	23	5	M10x1.5 ⁺	16	–
C6	180	225	140	165	5	310	195 ¹⁾	136	30	5	M10x1.5	16	362
C7	195	265	155	185	8	371	231 ¹⁾	164	37	5	M12x1.75	19	432
C8	226	310	185	215	5	445	285	185	37	5	M12x1.75	19	506
C9	280	365	230	265	5	524	334	220	42	5	M16x2	26	594

¹⁾ Select units do not have a concentric input and output. See input dimension "h" for these units in Table 4.

Table 2 Metric output available on request.

Unit	Standard Shaft - inches			Optional Shaft - mm		
	d _{h6} *	t	u	d *	t	u
C0	0.750	0.83	3/16 x 3/16 x 1-7/32	20 _{k6}	22.5	A6x6x32
C1	1.000	1.11	1/4 x 1/4 x 1-9/16	25 _{k6}	28	A8x7x40
C2	1.250	1.36	1/4 x 1/4 x 1-15/16	30 _{k6}	33	A8x7x50
C3	1.250	1.36	1/4 x 1/4 x 1-15/16	30 _{k6}	33	A8x7x50
C4	1.625	1.79	3/8 x 3/8 x 2-7/8	40 _{k6}	43	A12x8x70
C5	1.625	1.79	3/8 x 3/8 x 2-7/8	40 _{k6}	43	A12x8x70
C6	2.125	2.35	1/2 x 1/2 x 3-5/32	50 _{k6}	53.5	A14x9x90
C7	2.375	2.65	5/8 x 5/8 x 3-15/16	60 _{m6}	64	A18x11x100
C8	2.875	3.21	3/4 x 3/4 x 4-5/16	70 _{m6}	74.5	A20x12x125
C9	3.625	4.01	7/8 x 7/8 x 5-1/2	90 _{m6}	95	A25x14x140

* h6, j6, k6, m6 = existing values

Table 3 Motor Adapter Dimensions (mm)

Motor Adapter	Thickness c Min. ³⁾	Motor Shaft d2 Max. ²⁾	X	Wt. lbs.
ME10	21	19	40	5
ME20	24	32	50	8
ME30	26	38	60	15
ME40	35	48	88	28
ME50	43	60	81.5	42

²⁾ If an adapter bushing is required it will be supplied as a component of the motor mounting plate.

³⁾ Motor plate maximum thickness "c" will vary with motor shaft length but will not be less than shown.

For approximate weight, add adapter weight from Table 3 and base module weight from Table 4.

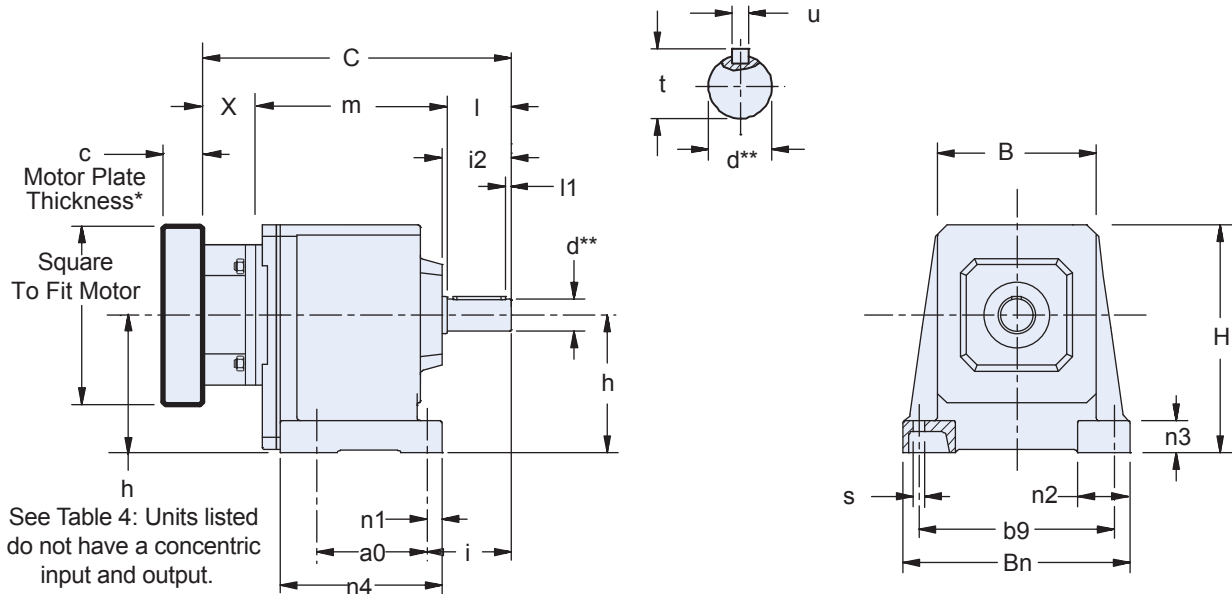
Table 4 Dimensions (mm)

Unit	ME10				ME20				ME30				ME40				ME50				Approx. Wt.(lbs.)	
	C	h	l	m	C	h	l	m	C	h	l	m	C	h	l	m	C	h	l	m		
C002	194	–	40	114	208	–	40	118	–	–	–	–	–	–	–	–	–	–	–	–	–	18
C102	227	–	50	137	241	–	50	141	253	–	50	143	–	–	–	–	–	–	–	–	–	29
C103	264	–	50	174	–	–	–	–	–	–	–	–	–	–	–	–	–	–	–	–	–	34
C202	255	–	60	155	269	–	60	159	281	–	60	161	–	–	–	–	–	–	–	–	–	38
C203 ⁴⁾	292	75.5	60	192	312	75.5	60	202	–	–	–	–	–	–	–	–	–	–	–	–	–	45
C302	–	–	–	–	288	–	60	178	300	–	60	180	331	–	60	183	–	–	–	–	–	49
C303 ⁴⁾	311	90	60	211	331	90	60	221	–	–	–	–	–	–	–	–	–	–	–	–	–	56
C402	–	–	–	–	335.5	–	80	205.5	347.5	–	80	207.5	378.5	–	80	210.5	–	–	–	–	–	71
C403	–	–	–	–	378.5	–	80	248.5	–	–	–	–	–	–	–	–	–	–	–	–	–	78
C502	–	–	–	–	357	–	80	227	369	–	80	229	400	–	80	232	407.5	–	80	246	–	95
C503	–	–	–	–	400	–	80	270	–	–	–	–	–	–	–	–	–	–	–	–	–	111
C612 ⁴⁾	–	–	–	–	–	–	–	–	393	189	100	233	424	189	100	236	430.5	189	100	249	–	115
C613 ⁴⁾	–	–	–	–	425	–	100	275	455	–	100	295	–	189	–	–	–	–	–	–	–	159
C712	–	–	–	–	–	–	–	–	446	–	120	266	476	–	120	268	482.5	–	120	281	–	199
C713 ⁴⁾	–	–	–	–	–	–	–	–	507	–	120	327	547	250	120	339	–	–	–	–	–	221
C812	–	–	–	–	–	–	–	–	–	–	–	–	543	–	140	315	549.5	–	140	328	–	322
C813	–	–	–	–	–	–	–	–	574	–	140	374	614	–	140	386	–	–	–	–	–	342
C912	–	–	–	–	–	–	–	–	–	–	–	–	–	–	–	–	616.5	–	170	365	–	596
C913	–	–	–	–	–	–	–	–	–	–	–	–	681	–	170	423	–	–	–	–	–	678

⁴⁾ Select units do not have a concentric input and output dimension "h". Table 4 "h" values are for input side only on these select units. All concentric input and output units dimension "h" values are listed in Table 1 above.

“N” Foot Mount —

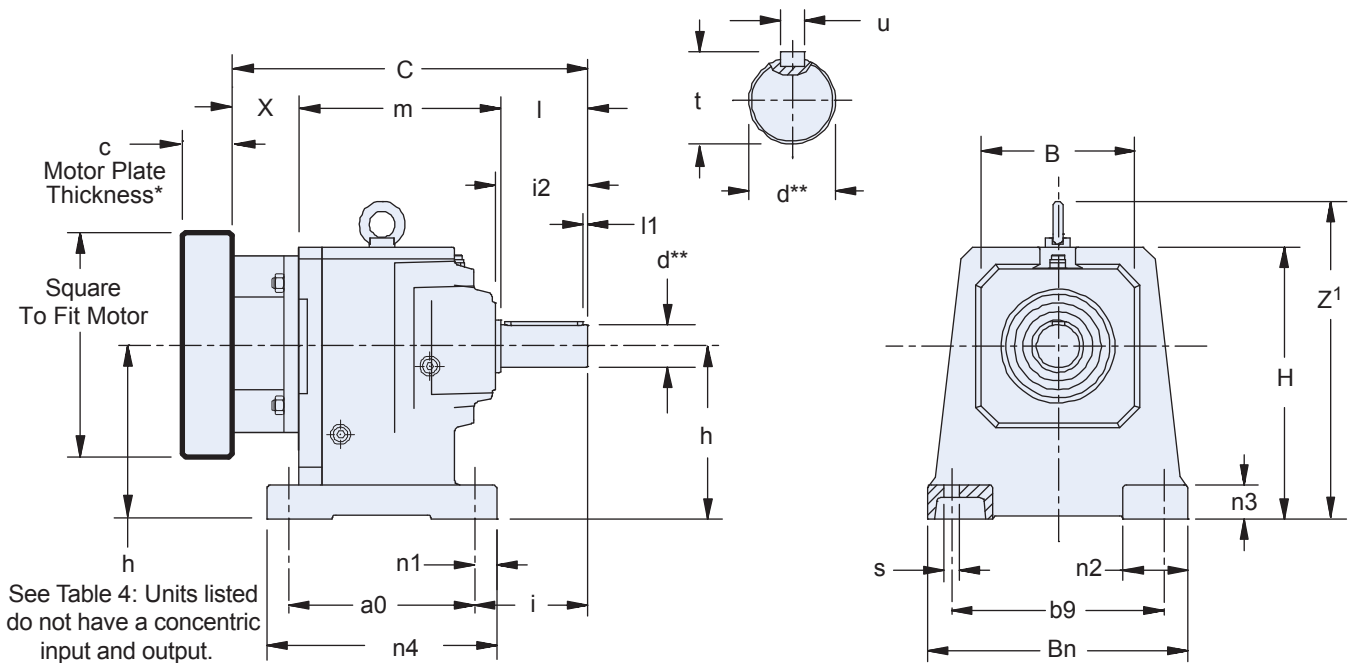
C002N thru C503N



* See Motor Mounting Plate Option, page 76 for details.

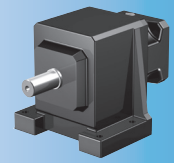
** For optional output shaft options, see page 75.

C612N thru C913N



* See Motor Mounting Plate Option, page 76 for details.

** For optional output shaft options, see page 75.



Dimensional Data

Table 1 Dimensions (mm)

Unit	a0	B	Bn	b9	H	h	i	i2	l1	n1	n2	n3	n4	s	Z ¹
C0	62	92	132	110	144	82	55	44	3	11	35	20	95	7	—
C1	70	124	176	150	177	102	67	54	5	13	42	25	118	9	—
C2	85	138	200	170	195	115 ¹⁾	79	65	5	14	50	30	135	11	—
C3	105	150	215	185	215	130 ¹⁾	79	65	5	14	50	30	154	11	—
C4	110	175	255	220	245	145	105	86	5	19	60	35	180	14	—
C5	130	192	290	245	290	170	108	86	5	22	70	40	197	18	—
C6	215	225	300	245	315	200 ¹⁾	130	106	5	25	75	40	265	18	367
C7	235	265	365	300	375	235 ¹⁾	163	127	5	25	90	50	285	18	436
C8	300	310	435	340	450	290	190	148	5	29	95	55	360	22	511
C9	340	365	510	400	530	340	222	178	5	34	110	60	410	26	600

¹⁾ Select units do not have a concentric input and output. See input dimension "h" for these units in Table 4.

Table 2 Metric output available on request.

Unit	Standard Shaft - inches			Optional Shaft - mm		
	d _{h6} *	t	u	d *	t	u
C0	0.750	0.83	$\frac{3}{16} \times \frac{3}{16} \times 1-\frac{7}{32}$	20 _{k6}	22.5	A6x6x32
C1	1.000	1.11	1/4 x 1/4 x 1-9/16	25 _{k6}	28	A8x7x40
C2	1.250	1.36	1/4 x 1/4 x 1-15/16	30 _{k6}	33	A8x7x50
C3	1.250	1.36	1/4 x 1/4 x 1-15/16	30 _{k6}	33	A8x7x50
C4	1.625	1.79	3/8 x 3/8 x 2-7/8	40 _{k6}	43	A12x8x70
C5	1.625	1.79	3/8 x 3/8 x 2-7/8	40 _{k6}	43	A12x8x70
C6	2.125	2.35	1/2 x 1/2 x 3-5/32	50 _{k6}	53.5	A14x9x90
C7	2.375	2.65	5/8 x 5/8 x 3-15/16	60 _{m6}	64	A18x11x100
C8	2.875	3.21	3/4 x 3/4 x 4-5/16	70 _{m6}	74.5	A20x12x125
C9	3.625	4.01	7/8 x 7/8 x 5-1/2	90 _{m6}	95	A25x14x140

* h₆, j₆, k₆, m₆ = existing values

Table 3 Motor Adapter Dimensions (mm)

Motor Adapter	Thickness c Min. ³⁾	Motor Shaft d2 Max. ²⁾	X	Wt. lbs.
ME10	21	19	40	5
ME20	24	32	50	8
ME30	25	38	60	15
ME40	33	48	88	28
ME50	43	60	81.5	42

²⁾ If an adapter bushing is required it will be supplied as a component of the motor mounting plate.

³⁾ Motor plate maximum thickness "c" will vary with motor shaft length but will not be less than shown.

For approximate weight, add adapter weight from Table 3 and base module weight from Table 4.

Table 4 Dimensions (mm)

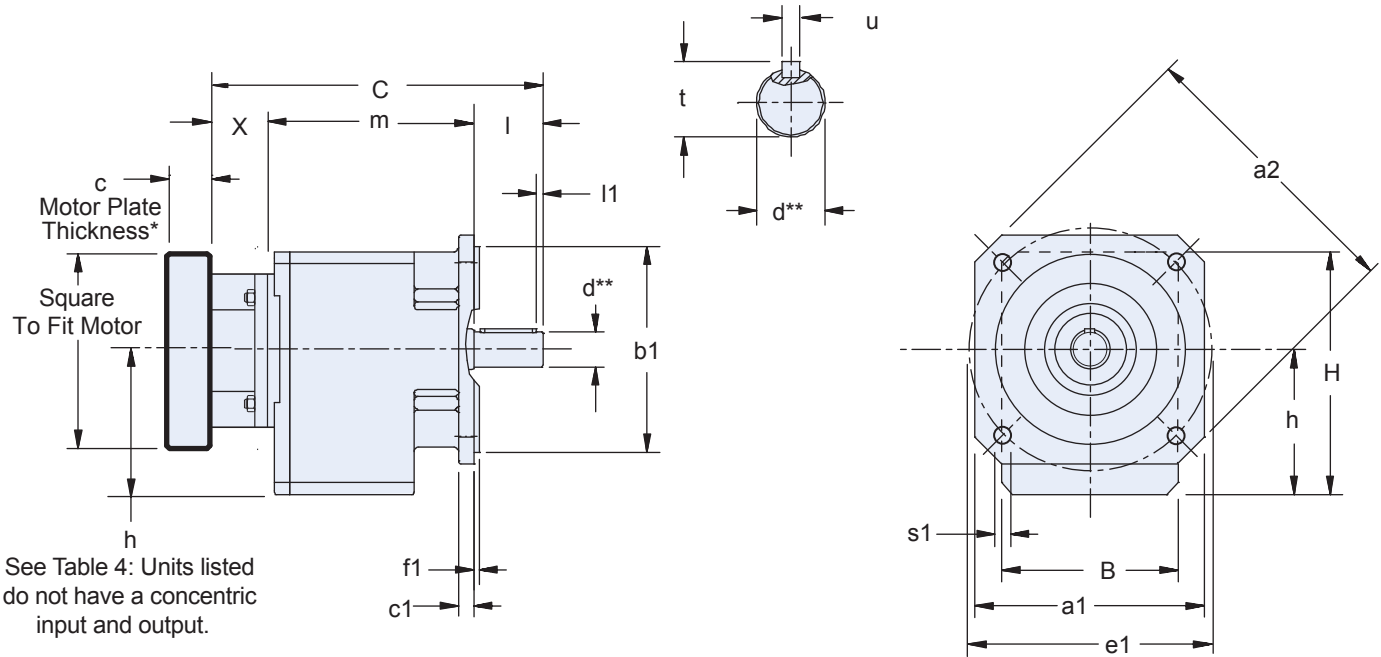
Unit	ME10				ME20				ME30				ME40				ME50				Approx. Wt.(lbs.)
	C	h	l	m	C	h	l	m	C	h	l	m	C	h	l	m	C	h	l	m	
C002	194	—	40	114	208	—	40	118	—	—	—	—	—	—	—	—	—	—	—	—	18
C102	227	—	50	137	241	—	50	141	253	—	50	143	—	—	—	—	—	—	—	—	29
C103	264	—	50	174	—	—	—	—	—	—	—	—	—	—	—	—	—	—	—	—	34
C202	255	—	60	155	269	—	60	159	281	—	60	161	—	—	—	—	—	—	—	—	38
C203 ⁴⁾	292	75.5	60	192	312	75.5	60	202	—	—	—	—	—	—	—	—	—	—	—	—	45
C302	—	—	—	—	288	—	60	178	300	—	60	180	331	—	60	183	—	—	—	—	49
C303 ⁴⁾	311	90	60	211	331	90	60	221	—	—	—	—	—	—	—	—	—	—	—	—	56
C402	—	—	—	—	335.5	—	80	205.5	347.5	—	80	207.5	378.5	—	80	210.5	—	—	—	—	71
C403	—	—	—	—	378.5	—	80	248.5	—	—	—	—	—	—	—	—	—	—	—	—	78
C502	—	—	—	—	357	—	80	227	369	—	80	229	400	—	80	232	407.5	—	80	246	95
C503	—	—	—	—	400	—	80	270	—	—	—	—	—	—	—	—	—	—	—	—	111
C612 ⁴⁾	—	—	—	—	—	—	—	—	393	189	100	233	424	189	100	236	430.5	189	100	249	115
C613 ⁴⁾	—	—	—	—	425	—	100	275	455	—	100	295	—	189	—	—	—	—	—	—	159
C712	—	—	—	—	—	—	—	—	446	—	120	266	476	—	120	268	482.5	—	120	281	199
C713 ⁴⁾	—	—	—	—	—	—	—	—	507	—	120	327	547	250	120	339	—	—	—	—	221
C812	—	—	—	—	—	—	—	—	—	—	—	—	543	—	140	315	549.5	—	140	328	322
C813	—	—	—	—	—	—	—	—	574	—	140	374	614	—	140	386	—	—	—	—	342
C912	—	—	—	—	—	—	—	—	—	—	—	—	—	—	—	—	616.5	—	170	365	596
C913	—	—	—	—	—	—	—	—	—	—	—	—	—	—	—	—	—	—	—	—	678

⁴⁾ Select units do not have a concentric input and output dimension "h". Table 4 "h" values are for input side only on these select units. All concentric input and output units dimension "h" values are listed in Table 1 above.

C Series: INLINE — Shaft Output

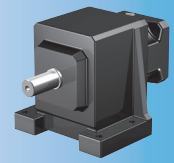
“Q” Square Output Flange —

C002Q thru C403Q Only



* See Motor Mounting Plate Option, page 76 for details.
 ** For optional output shaft options, see page 75.

Contact STÖBER for availability.



Dimensional Data

Table 1 Dimensions (mm)

Unit	a1	a2	B	b _{1j6} *	c1	e1	f1	H	h	l1	s1
C0	124	160	97	110	9	130	3	141	79	3	9
C1	145	192	130	130	11	165	3.5	175	100	5	11
C2	145	192	142	130	11	165	3.5	192	112 ¹⁾	5	11
C3	200	250	154	180	14	215	4	212	127 ¹⁾	5	14
C4	200	250	178	180	14	215	4	242.5	142.5	5	14

¹⁾ Select units do not have a concentric input and output. See input dimension "h" for these units in Table 4.

Table 2 Metric output available on request.

Unit	Standard Shaft - inches			Optional Shaft - mm		
	d _{h6} *	t	u	d _{k6} *	T	u
C0	0.750	0.83	$\frac{3}{16} \times \frac{3}{16} \times 1^{-7/32}$	20	22.5	A6x6x32
C1	1.000	1.11	1/4 x 1/4 x 1-9/16	25	28	A8x7x40
C2	1.250	1.36	1/4 x 1/4 x 1-15/16	30	33	A8x7x50
C3	1.250	1.36	1/4 x 1/4 x 1-15/16	30	33	A8x7x50
C4	1.625	1.79	3/8 x 3/8 x 2-7/8	40	43	A12x8x70

Table 3 Motor Adapter Dimensions (mm)

Motor Adapter	Thickness c Min. ³⁾	Motor Shaft d2 Max. ²⁾	X	Wt. (lbs.)
ME10	21	19	40	5
ME20	24	32	50	8
ME30	25	38	60	15
ME40	33	48	88	28

* h6, j6, k6 = existing values

²⁾ If an adapter bushing is required it will be supplied as a component of the motor mounting plate.

³⁾ Motor plate maximum thickness "c" will vary with motor shaft length but will not be less than shown.

For approximate weight, add adapter weight from Table 3 and base module weight from Table 4.

Table 4 Dimensions (mm)

Unit	ME10				ME20				ME30			ME40			Approx. Wt.(lbs.)
	C	h	l	m	C	h	l	m	C	l	m	C	l	m	
C002	194	—	40	114	208	—	40	118	—	—	—	—	—	—	18
C102	227	—	50	137	241	—	50	141	253	50	143	—	—	—	29
C103	264	—	50	174	—	—	—	—	—	—	—	—	—	—	34
C202	255	—	60	155	269	—	60	159	281	60	161	—	—	—	38
C203 ⁴⁾	292	75.5	60	192	312	75.5	60	202	—	—	—	—	—	—	45
C302	—	—	—	—	288	—	60	178	300	60	180	331	60	183	49
C303 ⁴⁾	311	90	60	211	331	90	60	221	—	—	—	—	—	—	56
C402	—	—	—	—	335.5	—	80	205.5	347.5	80	207.5	378.5	80	210.5	71
C403	—	—	—	—	378.5	—	80	248.5	—	—	—	—	—	—	78

⁴⁾ Select units do not have a concentric input and output dimension "h". Table 4 "h" values are for input side only on these select units. All concentric input and output units dimension "h" values are listed in Table 1 above.

C Series: INLINE — Shaft Output