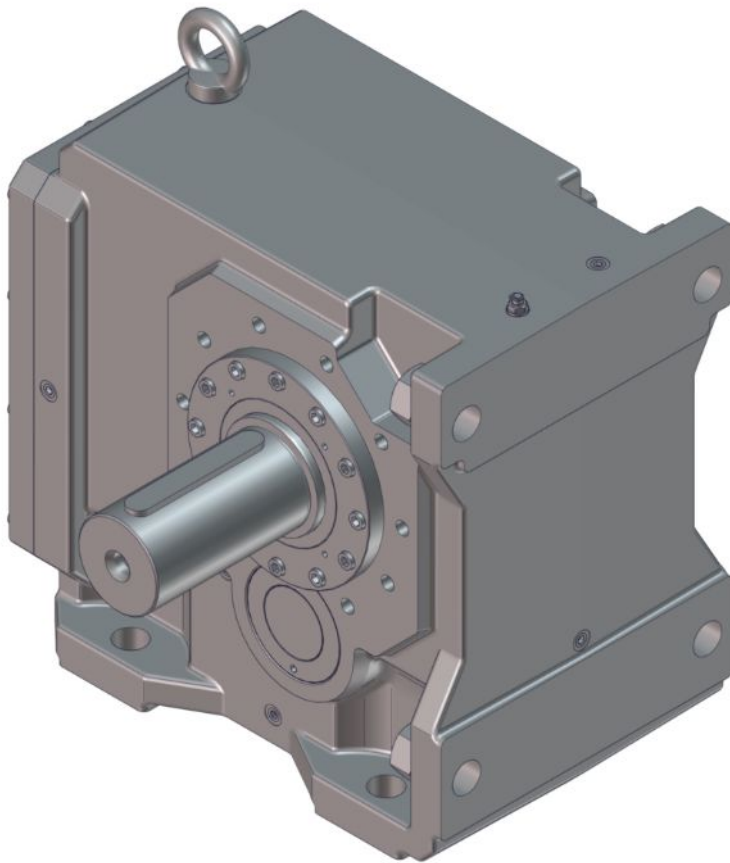




STÖBER

Replacement parts list

K10 helical bevel gear unit



[stober.com](https://www.stober.com)

en-US

07/2024

ID 443455_en.00

Table of contents

1	User information	3
1.1	Type designation	3
1.2	Nameplate	4
1.3	Additional documentation	4
2	Shafts	5
2.1	Overview of shafts	5
2.2	Hollow shaft	6
2.3	Hollow shaft with shrink ring	7
2.4	Solid shaft	8
2.5	Solid shaft on both sides	9
2.6	Pinion shaft	10
2.7	Countershaft	11
3	Housing with flange and torque arm bracket	12
4	Motor connection flange	13
4.1	Three-stage gear unit	13
4.2	Four-stage gear unit	14

1 User information

This replacement parts list is intended to make ordering replacement parts easier; however, it cannot replace repair instructions.

Have the gear unit repaired only by STOBBER service or STOBBER service partners. Only use replacement parts delivered by STOBBER. Be aware that improper repair work may cause material damage and may void the manufacturer's warranty.

All standard versions of the gear unit are presented in this document. Using the nameplate, the type designation and your order documents, you can find the chapters that correspond to your product. Places where a shim is pictured in the images may require multiple shims of varying thicknesses, depending on the tolerance.

Specify the type designation and serial number of the gear unit as well as the corresponding item number from this replacement parts list when ordering replacement parts.

1.1 Type designation

Example code

K	9	1	3	A	G	0100
----------	----------	----------	----------	----------	----------	-------------

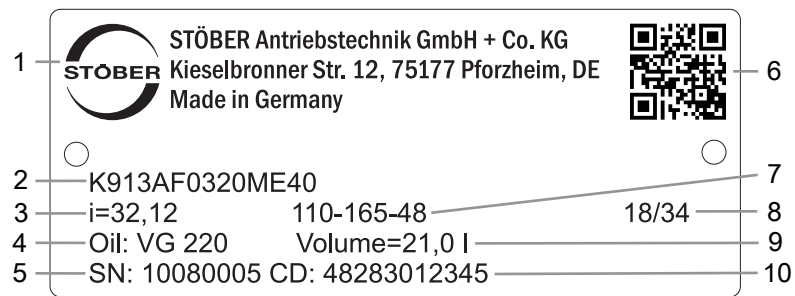
Explanation

Code	Designation	Design
K	Type	Helical bevel gear unit
9	Size	9 (example)
1	Generation	Generation 1
3	Stages	Three-stage
4		Four-stage
A	Shaft	Hollow shaft with keyway
S		Hollow shaft with shrink ring
V		Solid shaft
G	Housing	Pitch circle diameter
F		Round flange
NG		Foot + pitch circle diameter
NF		Foot + round flange
GD		Pitch circle diameter + torque arm bracket
NGD		Foot + pitch circle diameter + torque arm bracket
0100	Transmission ratio (i x 10)	i = 10 (example)
AW	Attachment groups	AW input shaft
D		D asynchronous motor
ED		ED/EK synchronous servo motor
EZ		EZ synchronous servo motor
IE2D		IE2 asynchronous motor
MB		MB motor adapter with brake
ME		ME motor adapter with EasyAdapt coupling
MQ		MQ square motor adapter
MR		MR round motor adapter
R		R variable speed gear unit

The type designation of PHQK gear units (PHQ planetary gear unit combined with K helical bevel gear unit) is explained in the documentation for the PHQK gear unit.

1.2 Nameplate

An example gear unit nameplate is explained in the figure below.



1	Name of manufacturer	2	Type designation
3	Gear ratio of the gear unit	4	Lubricant specification
5	Serial number of the gear unit	6	QR code (link to product information)
7	Dimensions of the motor adapter	8	Date of manufacture (year/calendar week)
9	Lubricant fill volume	10	Customer-specific data

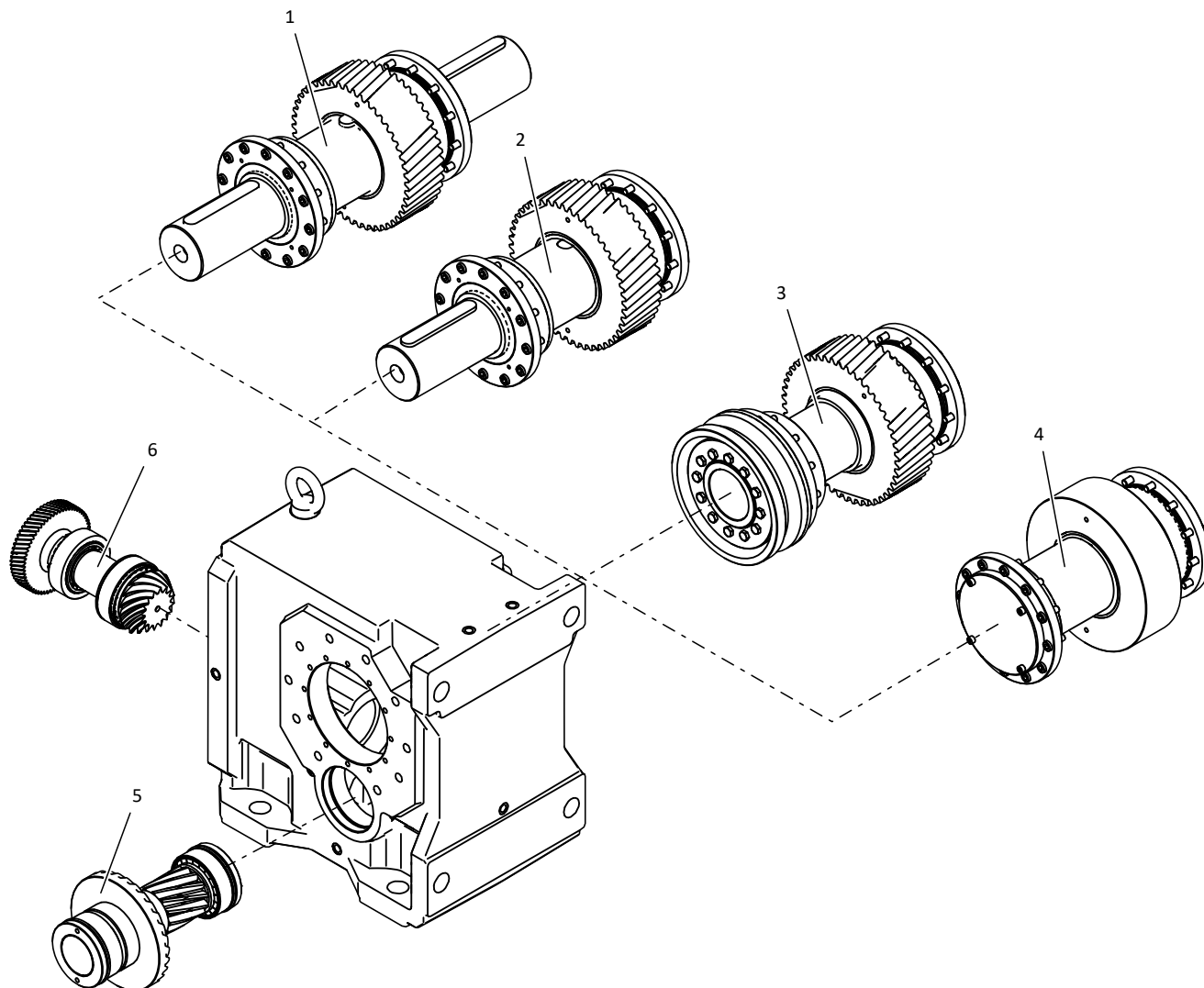
1.3 Additional documentation

You can find supporting technical documents for this product when you enter the serial number of the product at <https://id.stober.com> or scan the QR code on the product's nameplate.

2 Shafts

2.1 Overview of shafts

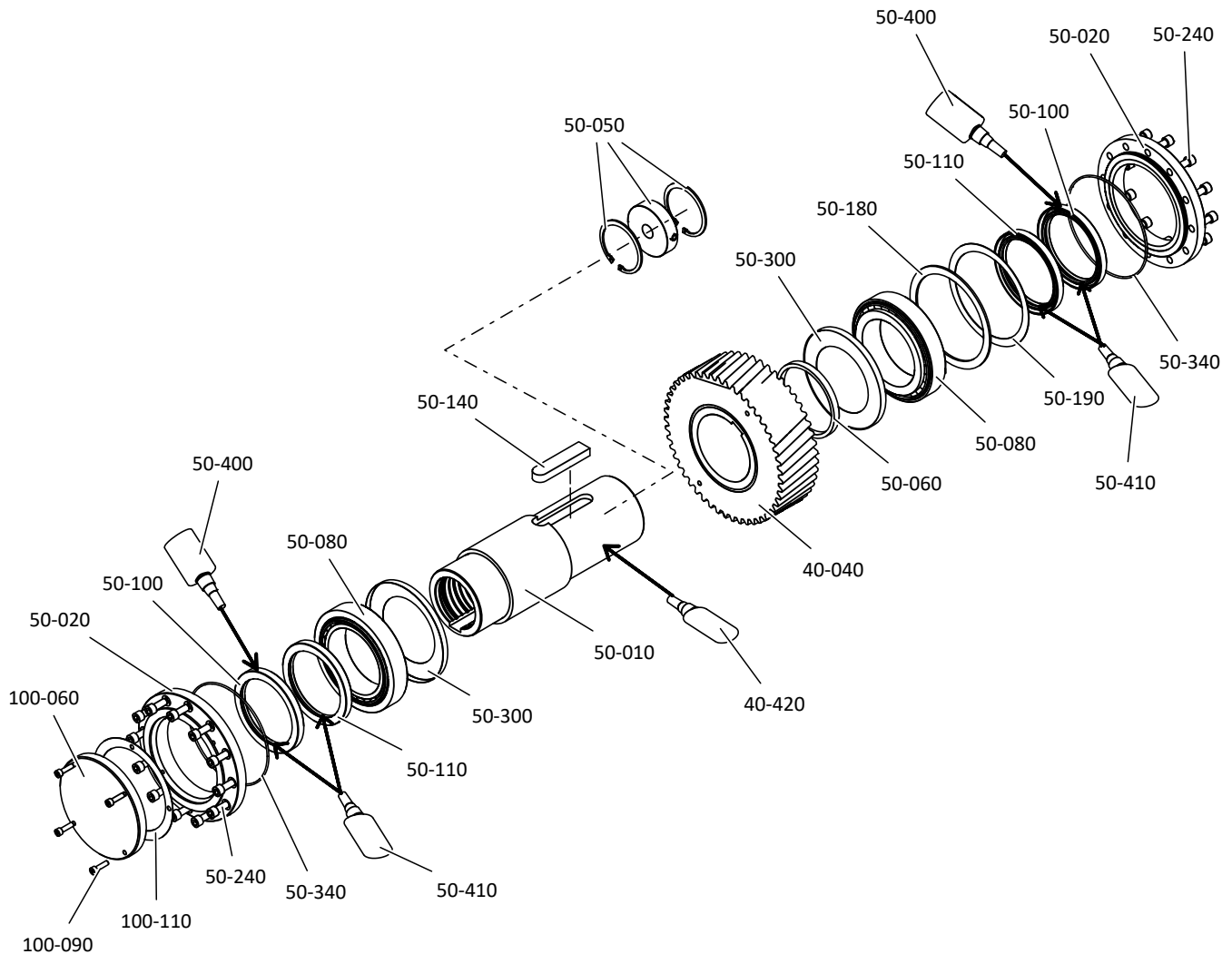
The pinion shaft, countershaft and various output shaft designs as well as their installation positions are presented in the figure below. A detailed depiction of individual shafts can be found later in this document.



No.	Designation	No.	Designation
1	Solid shaft on both sides	2	Solid shaft
3	Hollow shaft with shrink ring	4	Hollow shaft
5	Countershaft	6	Pinion shaft

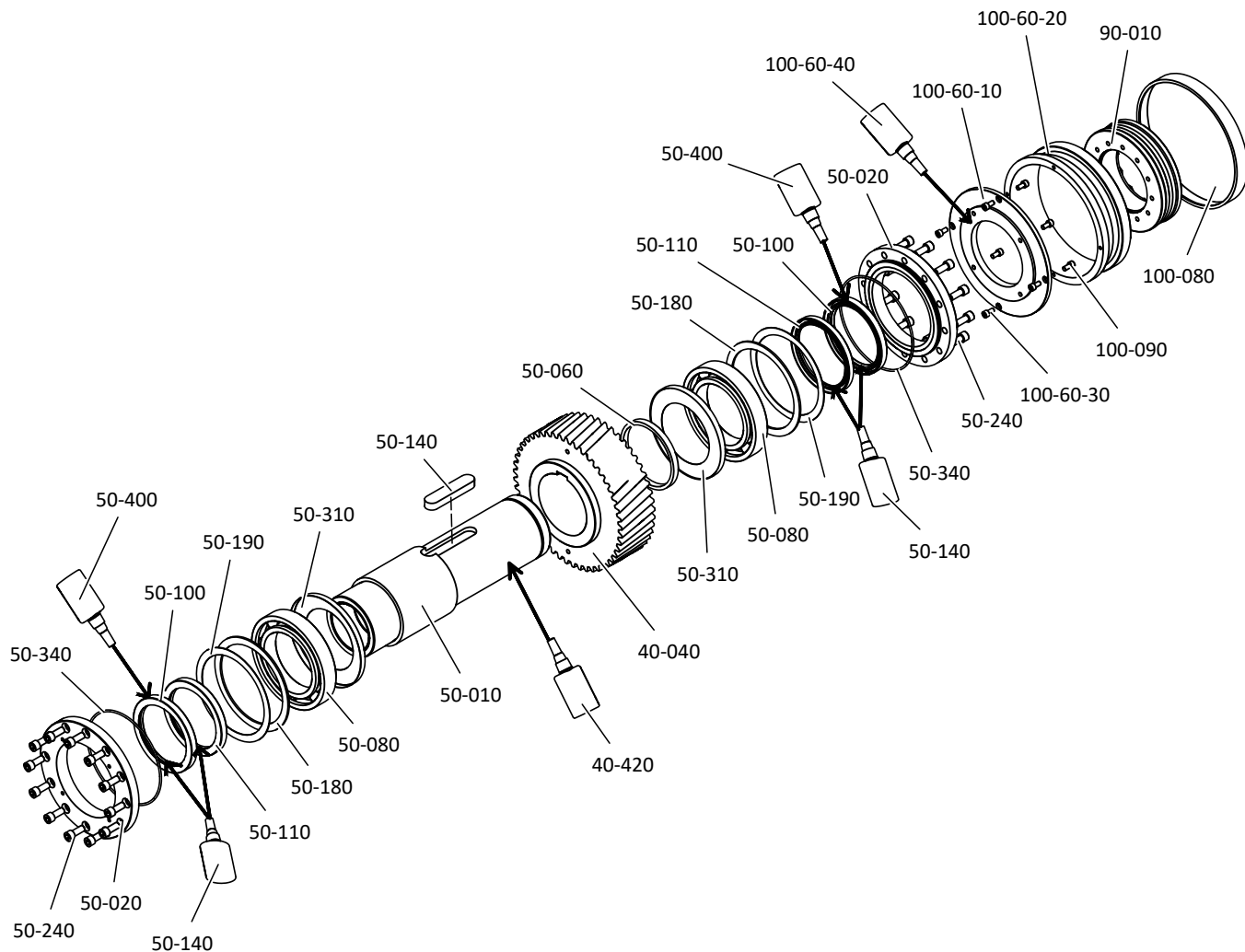
The shafts can also be installed turned by 180° based on the order (except for the pinion shaft).

2.2 Hollow shaft



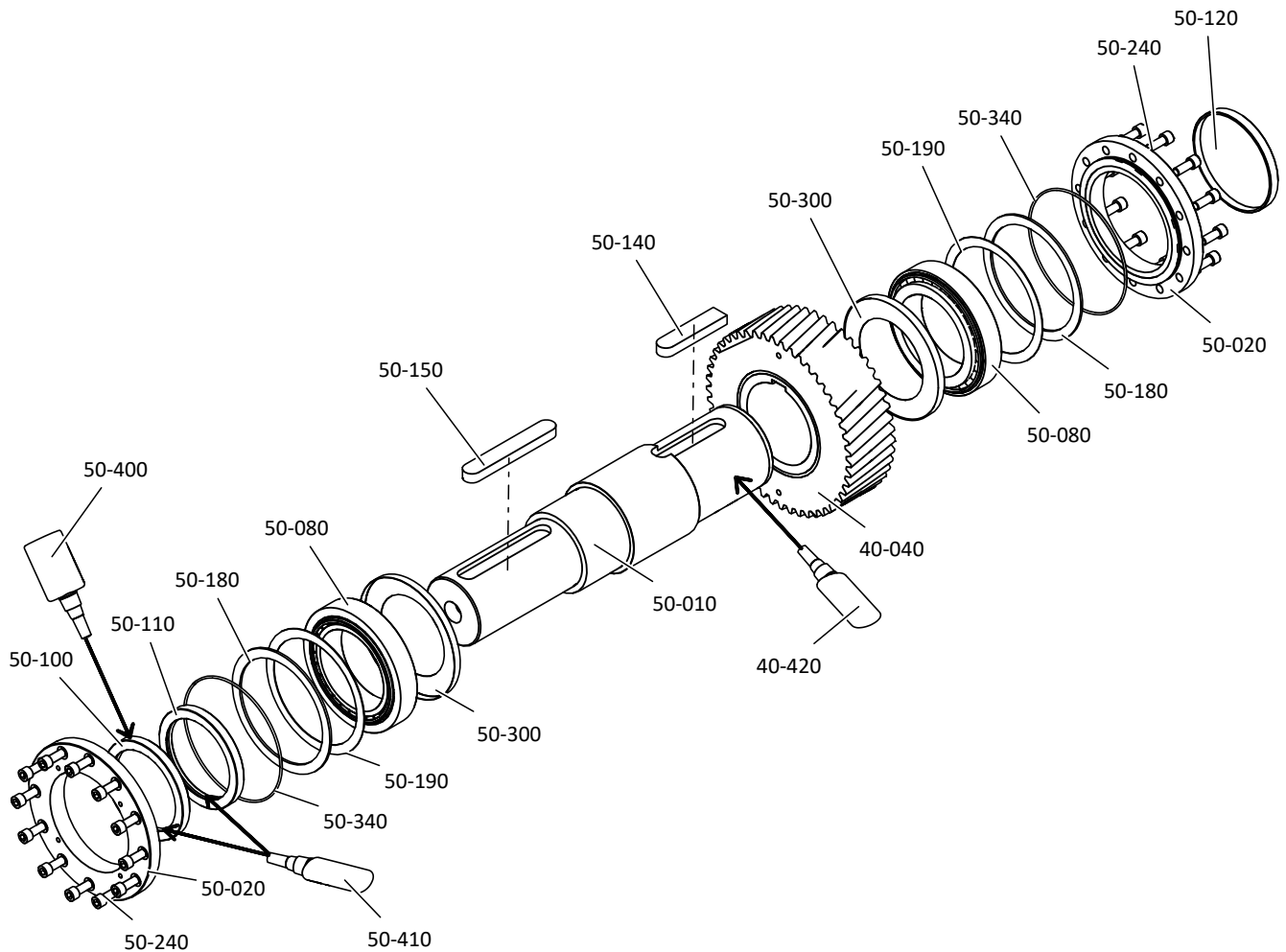
Item No.	Designation	Item No.	Designation
40-040	Gear	40-420	Adhesive (for backlash class II)
50-010	Hollow shaft	50-020	Output cover
50-050	Keeper plate (complete)	50-060	Spacer bushing
50-080	Rolling bearing	50-100	Shaft seal ring
50-110	Shaft seal ring (optional)	50-140	Feather key
50-180	Supporting ring	50-190	Shim
50-240	Cylinder screw	50-340	O-ring
50-300	Nilos ring (for EL3/EL4 mounting position)	50-400	Adhesive (for FKM shaft seal rings)
50-410	Lubricant	100-060	Cover (optional)
100-090	Cylinder screw (optional)	100-110	Flat gasket (optional)

2.3 Hollow shaft with shrink ring



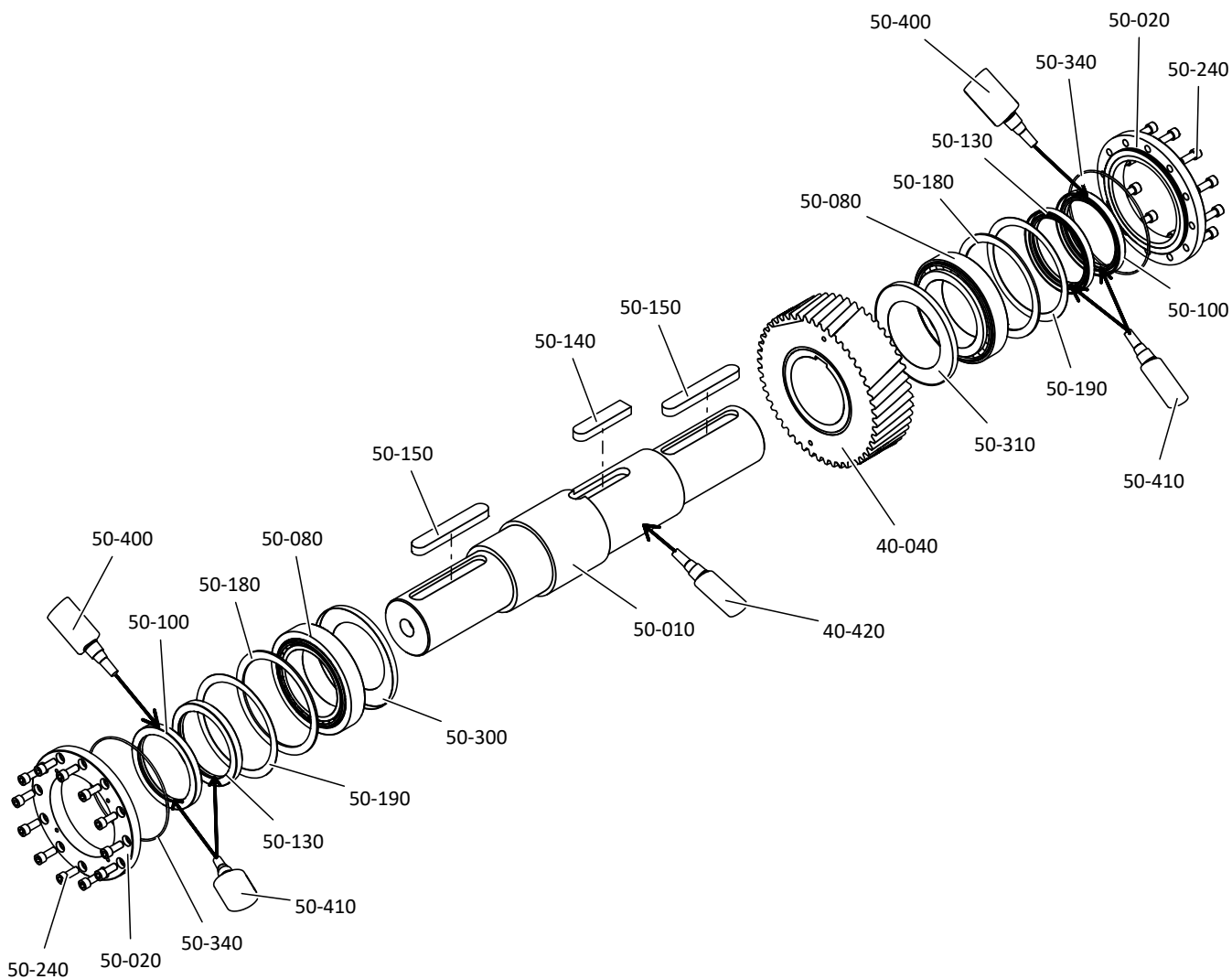
Item No.	Designation	Item No.	Designation
40-040	Gear	40-420	Adhesive (for backlash class II)
50-010	Hollow shaft	50-020	Output cover
50-060	Spacer bushing	50-080	Rolling bearing
50-100	Shaft seal ring	50-110	Shaft seal ring (optional)
50-140	Feather key	50-180	Supporting ring
50-190	Shim	50-240	Cylinder screw
50-310	Nilos ring (for EL3/EL4 mounting position)	50-340	O-ring
50-400	Adhesive (for FKM shaft seal rings)	50-410	Lubricant
90-010	Shrink ring (complete)	100-60-10	Flange (option)
100-60-20	Cover pipe (optional)	100-60-30	Cylinder screws (option)
100-60-40	surface seal	100-080	Cover cap (optional)
100-090	Cylinder screw (optional)		

2.4 Solid shaft



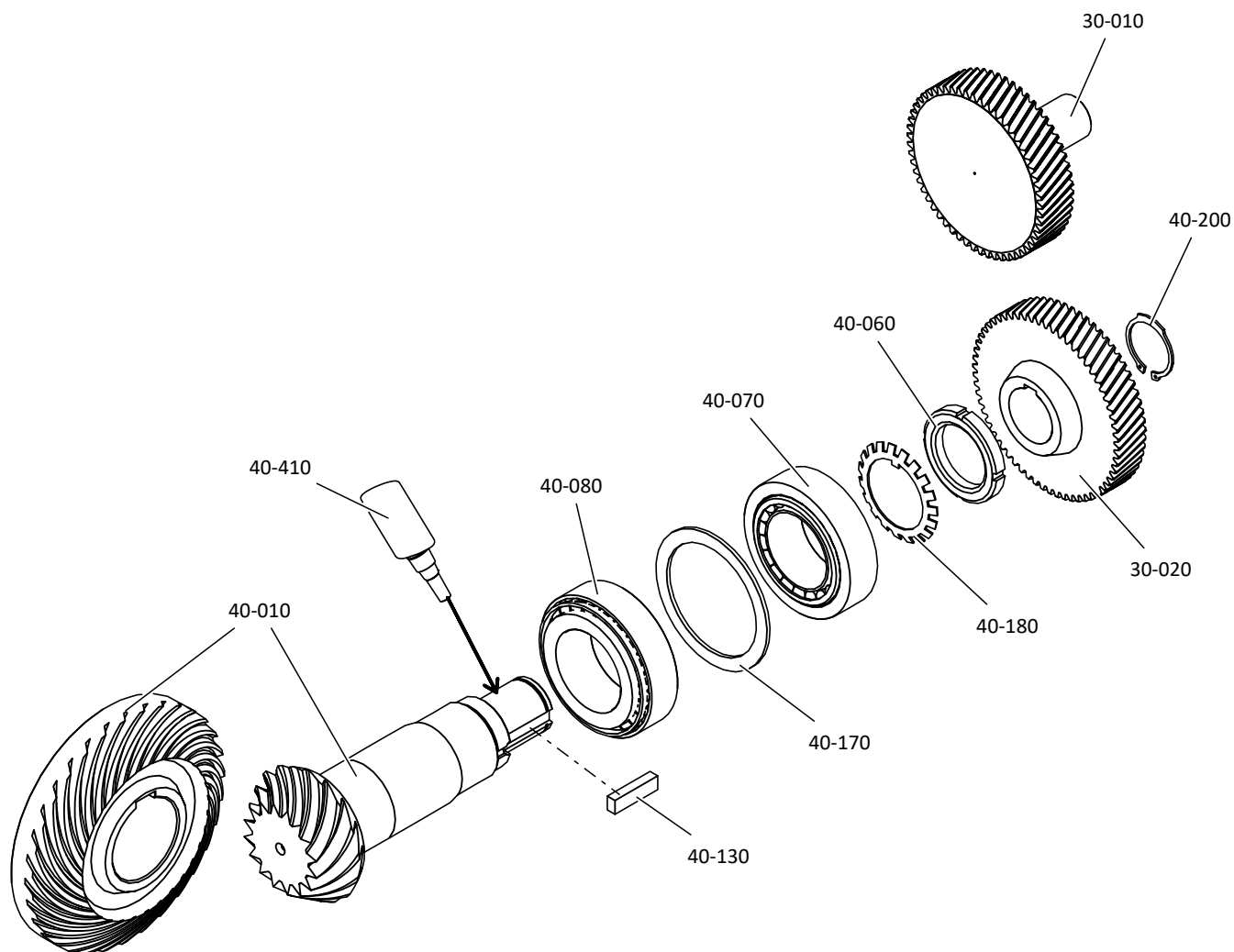
Item No.	Designation	Item No.	Designation
40-040	Gear	40-420	Adhesive (for backlash class II)
50-010	Solid shaft	50-020	Output cover
50-080	Rolling bearing	50-100	Shaft seal ring
50-110	Shaft seal ring (optional)	50-120	Sealing cap
50-140	Feather key	50-150	Feather key
50-180	Supporting ring	50-190	Shim
50-240	Cylinder screw	50-300	Nilos ring (for EL3/EL4 mounting position)
50-340	O-ring	50-400	Adhesive (for FKM shaft seal rings)
50-410	Lubricant		

2.5 Solid shaft on both sides



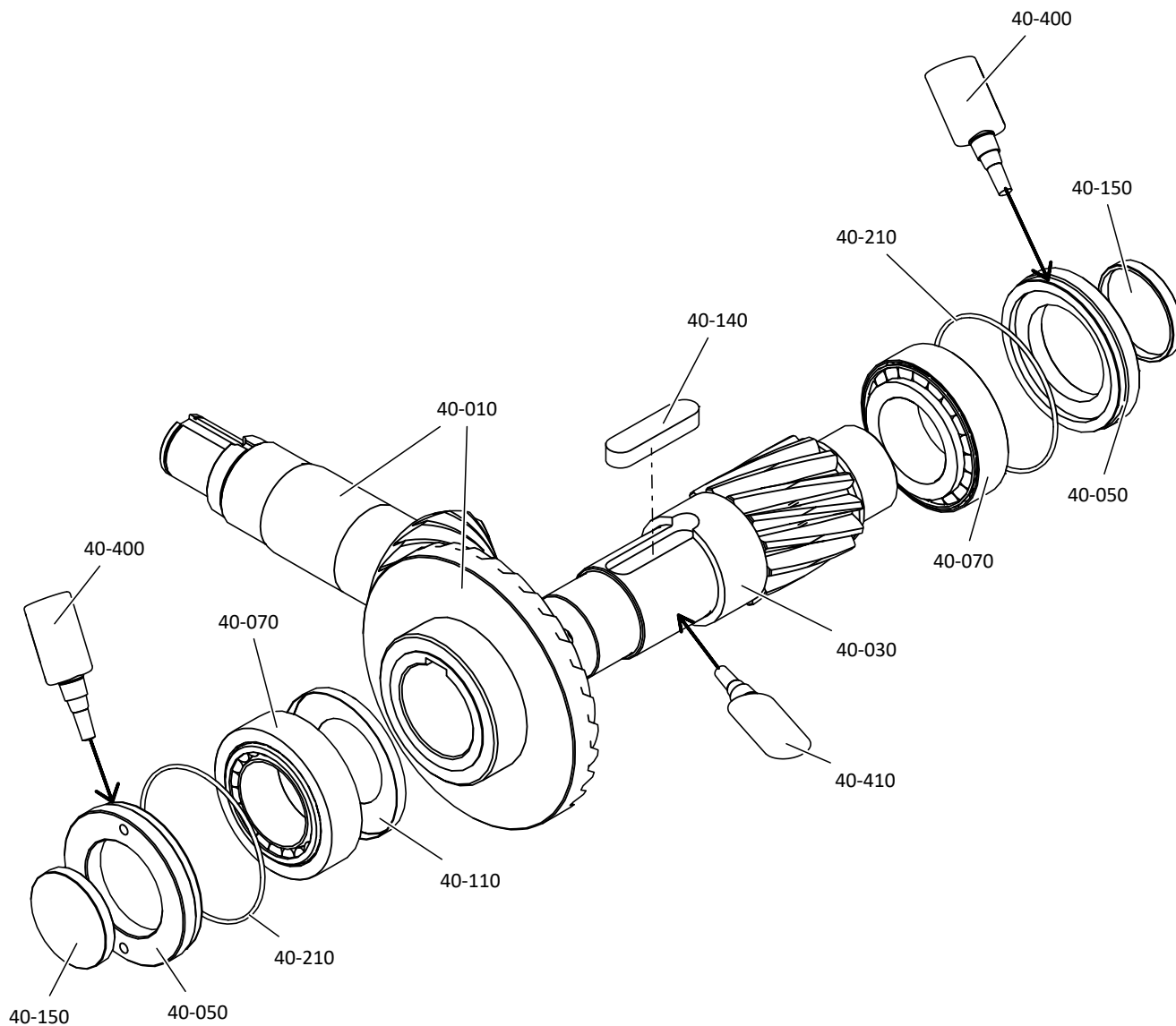
Item No.	Designation	Item No.	Designation
40-040	Gear	40-420	Adhesive (for backlash class II)
50-010	Solid shaft	50-020	Output cover
50-080	Rolling bearing	50-100	Shaft seal ring
50-130	Shaft seal ring (optional)	50-140	Feather key
50-150	Feather key	50-180	Supporting ring
50-190	Shim	50-240	Cylinder screw
50-300	Nilos ring (for EL3/EL4 mounting position)	50-340	O-ring
50-400	Adhesive (for FKM shaft seal rings)	50-410	Lubricant

2.6 Pinion shaft



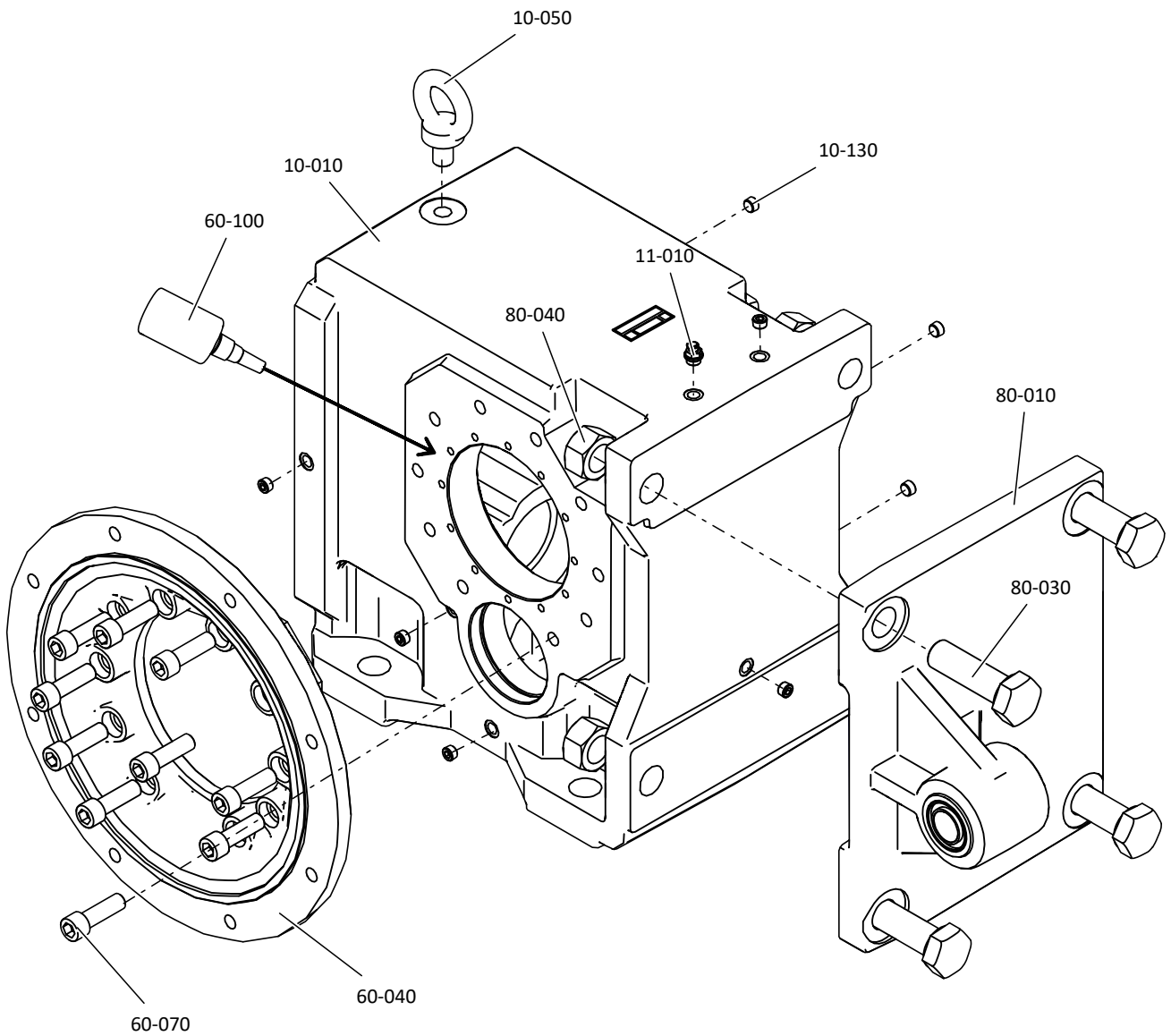
Item No.	Designation	Item No.	Designation
30-010	Insertion pinion	30-020	Gear
40-010	Pinion shaft with crown gear	40-060	Grooved nut
40-070	Rolling bearing	40-080	Rolling bearing
40-130	Feather key	40-170	Supporting ring
40-180	Tab washer	40-200	Retaining ring
40-410	Adhesive		

2.7 Countershaft



Item No.	Designation	Item No.	Designation
40-010	Pinion shaft with crown gear	40-030	Countershaft
40-050	Threaded ring	40-070	Rolling bearing
40-110	Nilos ring (for EL3/EL4 mounting position)	40-140	Feather key
40-210	O-ring	40-400	Threadlocker
40-410	Adhesive (for backlash class II)		

3 Housing with flange and torque arm bracket



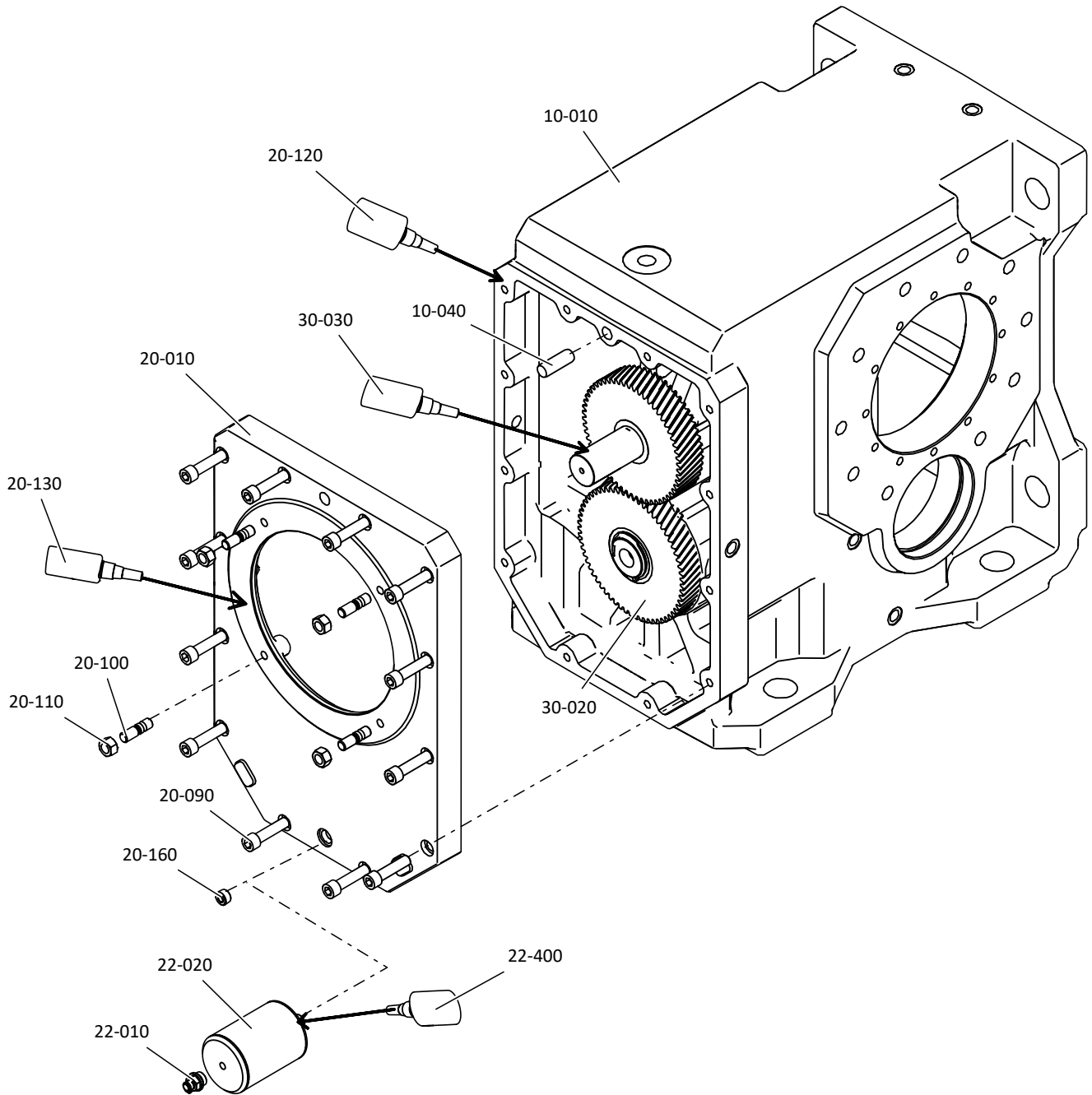
Item No.	Designation	Item No.	Designation
10-010	Gear housing	10-050	Eyebolt
10-130	Screw plug	11-010	Air release valve (position dependent on mounting position)
60-040	Round flange (optional)	60-070	Cylinder screw (optional)
60-100	Surface seal (optional)	80-010	Torque arm bracket (optional)
80-030	Hex head screw (option)	80-040	Hex nut (option)

The round flange can also be attached on the opposite side of the gear unit based on the order (4).

The torque arm bracket can also be attached on gear unit side 1 or turned by 180° and attached based on the order.

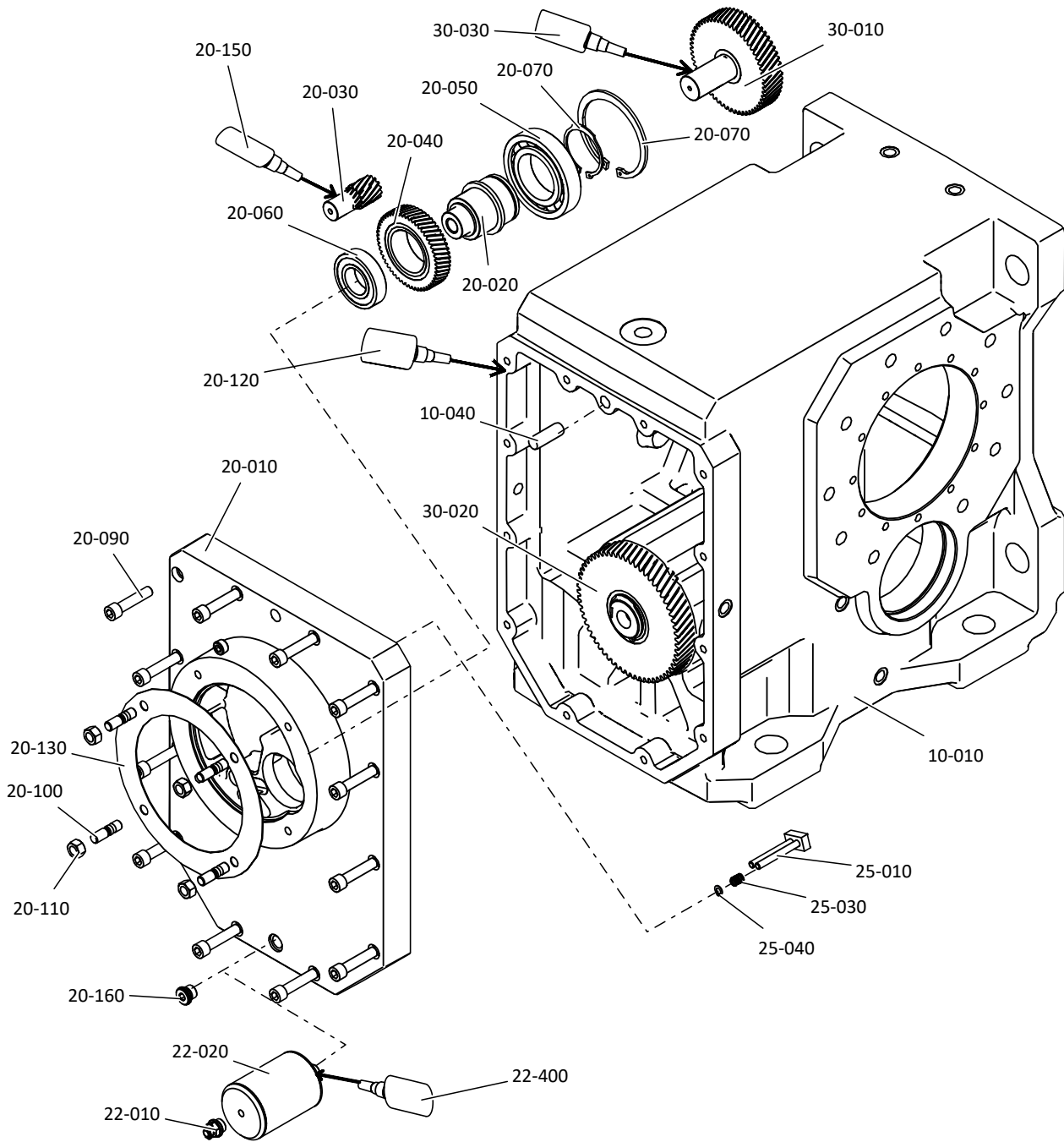
4 Motor connection flange

4.1 Three-stage gear unit



Item No.	Designation	Item No.	Designation
10-010	Gear housing	10-040	Cylinder pin (for standard backlash)
20-010	Motor connecting flange	20-090	Cylinder screw
20-100	Stud screw (except for attachment group ED/EZ/ME) Cylinder screw (for attachment group ED/EZ/ME)	20-110	Hex nut (except for attachment group ED/EZ/ME)
20-120	Surface seal	20-130	Surface seal
20-160	Screw plug	22-010	Air release valve (optional)
22-020	Expansion tank (optional for mounting position EL5)	22-400	Adhesive (optional)
30-010	Insertion pinion	30-020	Gear
30-030	Adhesive		

4.2 Four-stage gear unit



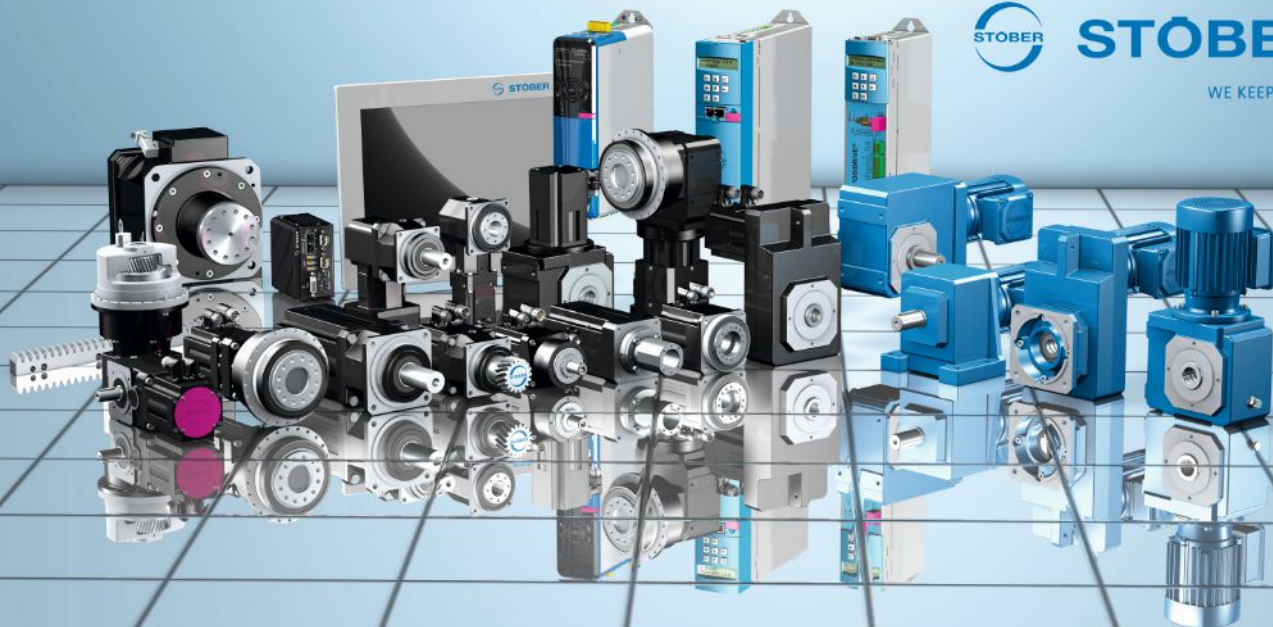
Item No.	Designation	Item No.	Designation
10-010	Gear housing	10-040	Cylinder pin (for standard backlash)
20-010	Attachment housing	20-020	Countershaft
20-030	Insertion pinion	20-040	Gear
20-050	Rolling bearing	20-060	Rolling bearing
20-070	Retaining ring	20-080	Retaining ring
20-090	Cylinder screw	20-100	Stud screw (except for attachment group ED/EZ/ME) Cylinder screw (for attachment group ED/EZ/ME)
20-110	Hex nut (except for attachment group ED/EZ/ME)	20-120	Surface seal
20-130	Flat gasket	20-150	Adhesive
20-160	Screw plug	22-010	Air release valve (optional)

Item No.	Designation	Item No.	Designation
22-020	Expansion tank (optional for mounting position EL5)	22-400	Adhesive (optional)
25-010	Oil wiper (for mounting position EL5)	25-030	Pressure spring (for mounting position EL5)
25-040	Grip ring (for mounting position EL5)	30-010	Insertion pinion
30-020	Gear	30-030	Adhesive



STÖBER

WE KEEP THINGS MOVING



Technische Änderungen vorbehalten.
Errors and changes excepted.

ID 443455_en.00
07/2024

STÖBER ANTRIEBSTECHNIK GmbH & Co. KG
Kieselbronner Str. 12
75177 Pforzheim
Germany
Tel. +49 7231 582-0
mail@stoerber.de
www.stoerber.com

24 h Service Hotline +49 7231 582-3000