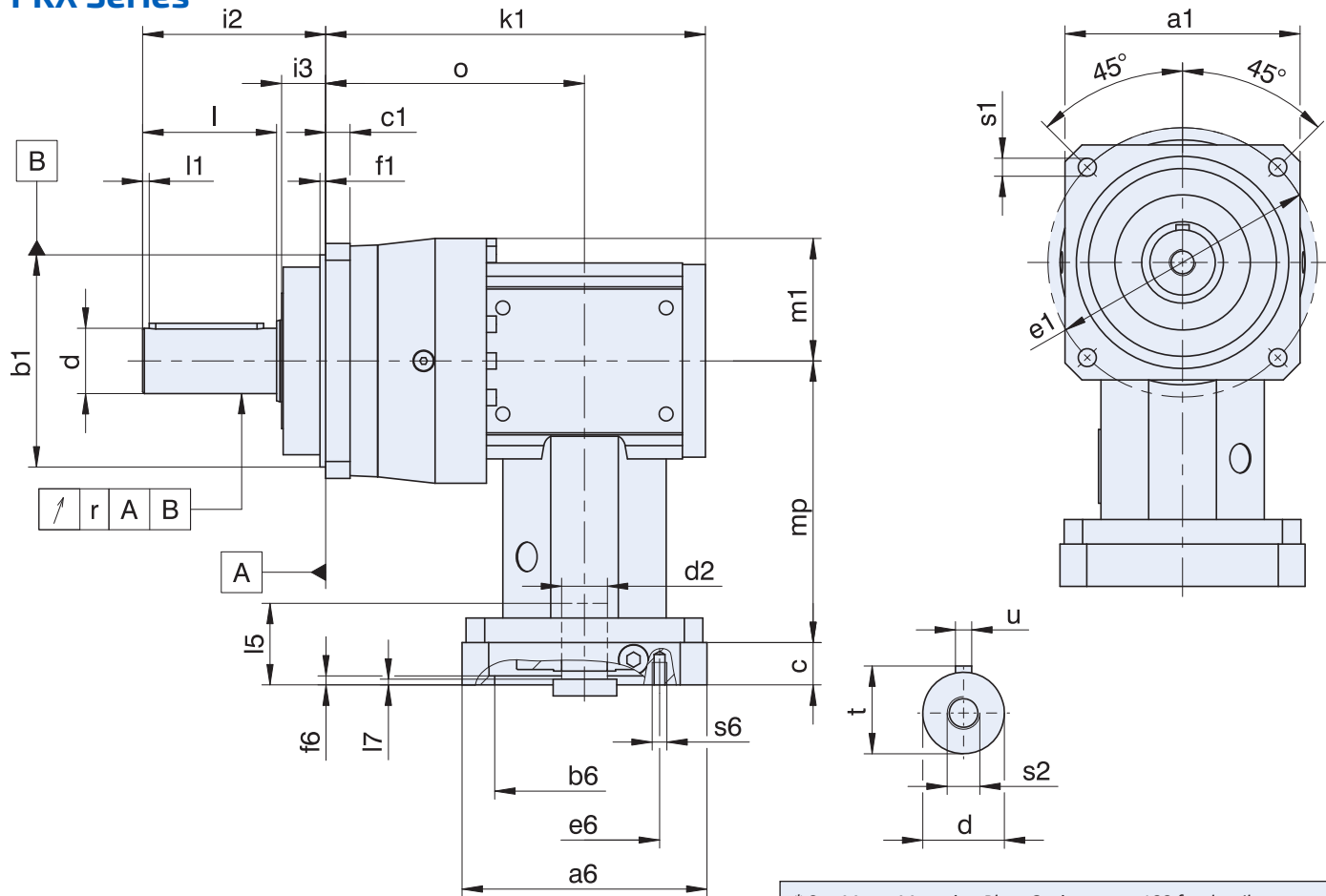


PKX Series: RIGHT ANGLE – Shaft Output

PKX Series

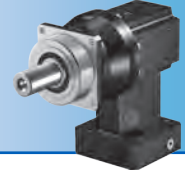


* See Motor Mounting Plate Option, page 188 for details.
 ** See Output Shaft Options, page 189 for details.

Table 1 Dimensions (mm)

Unit	$\varnothing a_1$	$\varnothing b_1$	c_1	$\varnothing d$	$\varnothing e_1$	f_1	i_2	i_3	k_1	l	l_1	m_1	o	r	$\varnothing s_1$	s_2	t	u
P231_KX301	55	50 ^{H6}	6	12 ^{K6}	63	7.0	36	12	124.0	22	2	31	84.0	–	5.5	M4	13.5	A4×4×18
P232_KX301	55	50 ^{H6}	6	12 ^{K6}	63	7.0	36	12	156.0	22	2	31	116.0	–	5.5	M4	13.5	A4×4×18
P331_KX301	72	60 ^{H6}	7	16 ^{K6}	75	7.5	48	18	131.0	28	2	36	91.0	0.025	5.5	M5	18.0	A5×5×22
P332_KX301	72	60 ^{H6}	7	16 ^{K6}	75	7.5	48	18	165.5	28	2	36	125.5	0.025	5.5	M5	18.0	A5×5×22
P431_KX401	76	70 ^{H6}	9	22 ^{K6}	85	7.5	56	18	165.0	36	3	49	115.0	0.025	6.6	M8	24.5	A6×6×28
P432_KX301	76	70 ^{H6}	9	22 ^{K6}	85	7.5	56	18	180.0	36	3	49	140.0	0.025	6.6	M8	24.5	A6×6×28
P531_KX501	101	90 ^{H6}	10	32 ^{K6}	120	15.0	88	28	187.5	58	3	57	128.5	0.030	9.0	M12	35.0	A10×8×50
P532_KX401	101	90 ^{H6}	10	32 ^{K6}	120	15.0	88	28	207.0	58	3	57	157.0	0.030	9.0	M12	35.0	A10×8×50
P731_KX701	144	130 ^{H6}	15	40 ^{K6}	165	3.5	112	27	232.5	82	4	72	158.5	0.035	11.0	M16	43.0	A12×8×70
P732_KX501	144	130 ^{H6}	15	40 ^{K6}	165	3.5	112	27	255.5	82	4	72	196.5	0.035	11.0	M16	43.0	A12×8×70
P831_KX701	190	160 ^{H6}	15	55 ^{K6}	215	10.0	112	27	267.0	82	6	95	193.0	0.035	13.5	M20	59.0	A16×10×70
P832_KX701	190	160 ^{H6}	15	55 ^{K6}	215	10.0	112	27	324.5	82	6	95	250.5	0.035	13.5	M20	59.0	A16×10×70
P932_KX701	212	180 ^{H6}	17	75 ^{K6}	250	10.0	143	34	388.0	105	7	113	314.0	0.040	17.5	M20	79.5	A20×12×90

Dimensional Data



Motor Mounting Plate

Example dimensions for the motor connection

Type	Øb6	Øe6	Ød2max	l5	□a6	c	f6	l7	s6
P_KX301_MF	60 ^{H6}	75	19	40	75	18	3.5	5.5	M5
P_KX401_MF	95 ^{H6}	115	24	42	100	21	4.0	4.5	M8
P_KX501_MF	110 ^{H6}	130	32	53	120	24	4.0	5.0	M8
P_KX701_MF	130 ^{H6}	165	38	64	150	26	5.5	8.0	M10

In the table above, you will find example dimensions for the motor connection for the MF motor adapter. **Note that when dimension c is lengthened (depending on the motor used), dimensions c6, l5 and lg are also lengthened accordingly.**

PKX Series: RIGHT ANGLE – Shaft Output